

Hardin County, Iowa
 Horizontal Datum: **NAD 83(NA2011)** - Vertical Datum: **NAVD 1988**
 Iowa State Plane North Zone (1401)
 Iowa Regional Coordinate System, Zone 4, Sioux City-Iowa Falls LCC
 US Survey Feet
9/30/18

Point Name: **8002**

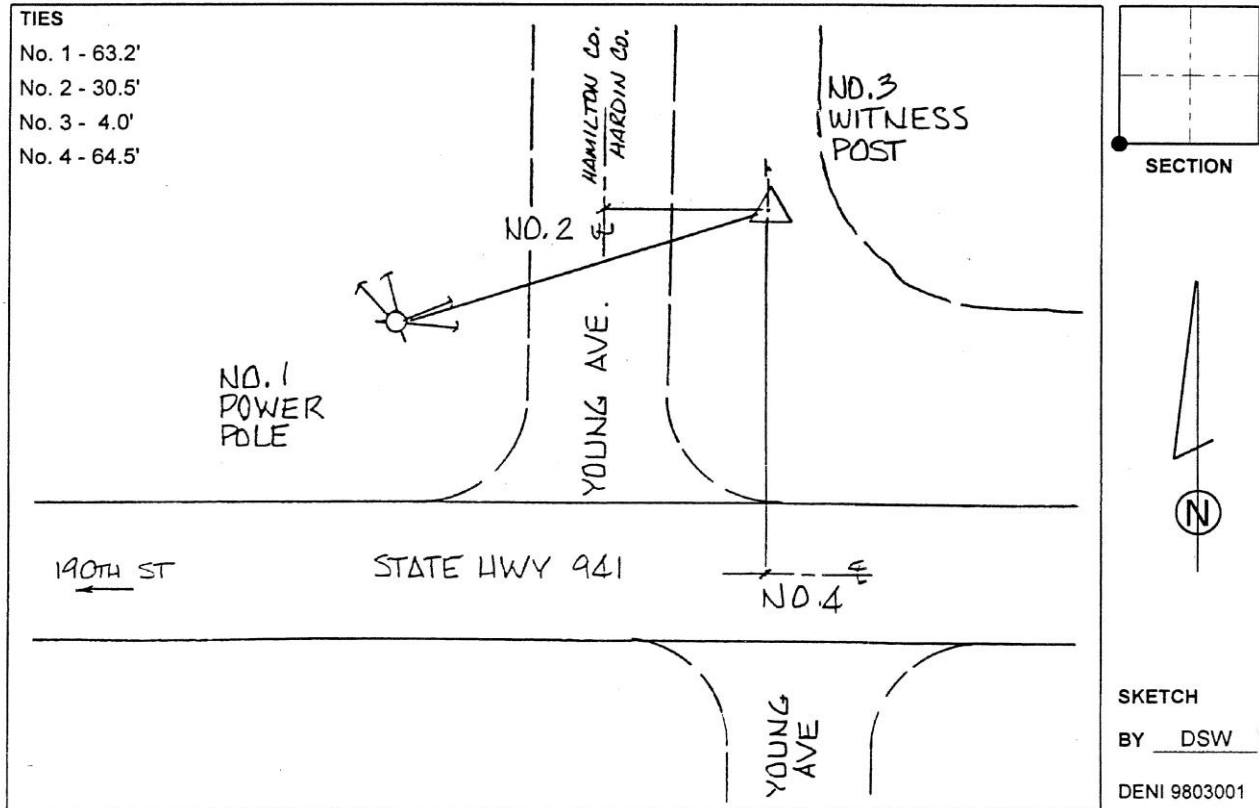
Designation: 892218 3 (Set by Deni Associates in 1998)

NAD 83(NA2011) Latitude: **N42°30'52.48793"** Longitude: **W93°29'57.26195"**
 NAVD 88 Ortho Height: **1147.670sft** Ellip. Ht: **1056.932sft** **Geoid12B**

Iowa North Zone (1401) Northing: **3650568.825sft** Easting: **4921455.053sft**
 Mapping Angle: **0°00'02"** Combination Scale Factor: **0.9998984014**

IaRCS Zone 4 Northing: **8595996.100sft** Easting: **14859697.875sft**
 Mapping Angle: **0°54'07"** Combination Scale Factor: **0.9999945296**

Monument Type: 3-1/4" aluminum disk set in the top of a 12" dia. poured-in-place concrete monument.



This document was prepared by Dan Corbin, Inc. on February 18th, 2019 for Hardin County, Iowa.