

**Hardin County, Iowa**  
 Horizontal Datum: **NAD 83(NA2011)** - Vertical Datum: **NAVD 1988**  
 Iowa State Plane North Zone (1401)  
 Iowa Regional Coordinate System, Zone 4, Sioux City-Iowa Falls LCC  
 US Survey Feet  
**9/30/18**

Point Name: **8003**

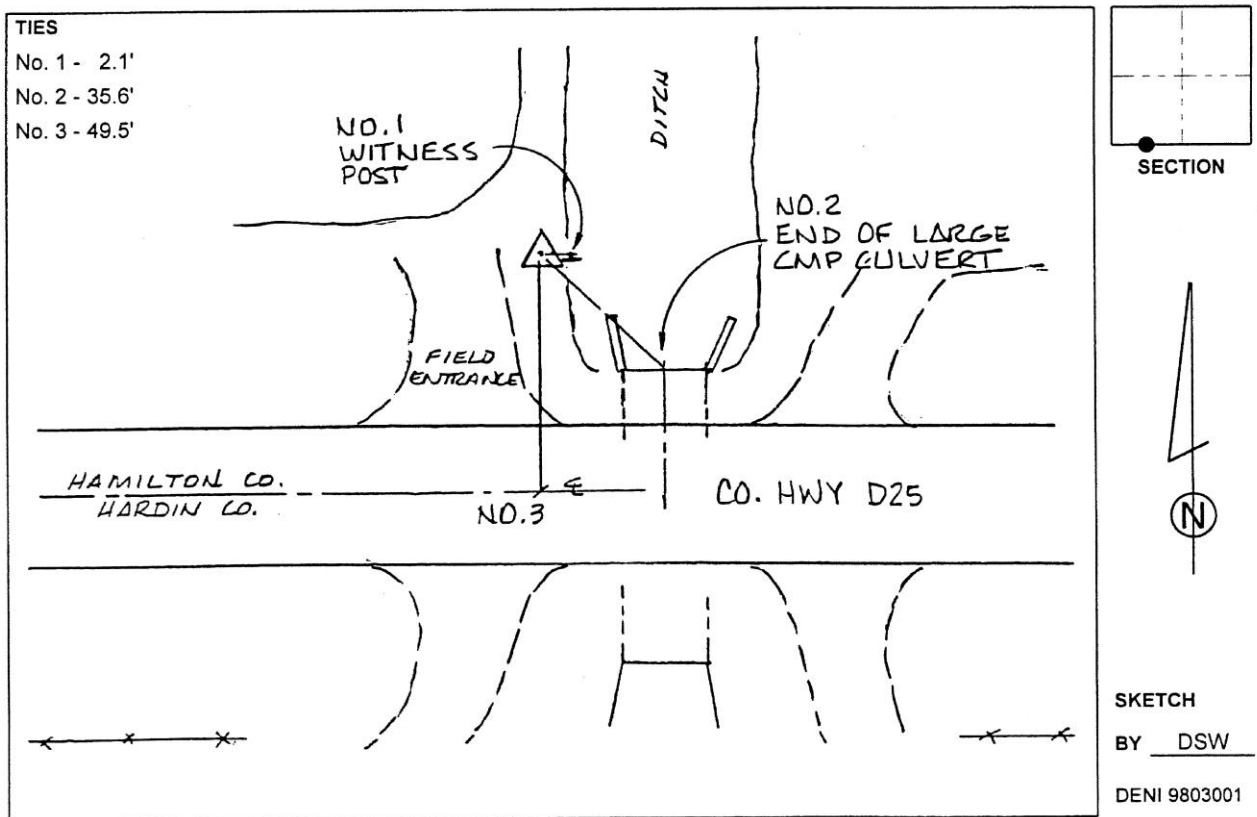
**Designation:** 892231 3 (Set by Deni Associates in 1998)

NAD 83(NA2011) Latitude: **N42°28'15.81126"** Longitude: **W93°29'36.97747"**  
 NAVD 88 Ortho Height: **1150.250sft** Ellip. Ht: **1058.891sft** **Geoid12B**

**Iowa North Zone (1401)** Northing: **3634708.591sft** Easting: **4922975.363sft**  
 Mapping Angle: **0°00'16"** Combination Scale Factor: **0.9999006133**

**IaRCS Zone 4** Northing: **8580160.236sft** Easting: **14861467.661sft**  
 Mapping Angle: **0°54'20"** Combination Scale Factor: **0.9999949707**

**Monument Type:** 3-1/4" aluminum disk set in the top of a 12" dia. poured-in-place concrete monument.



*This document was prepared by Dan Corbin, Inc. on February 18<sup>th</sup>, 2019 for Hardin County, Iowa.*