

**Hardin County, Iowa**  
Horizontal Datum: **NAD 83(NA2011)** - Vertical Datum: **NAVD 1988**  
Iowa State Plane North Zone (1401)  
Iowa Regional Coordinate System, Zone 4, Sioux City-Iowa Falls LCC  
US Survey Feet  
**9/30/18**

Point Name: **8004**

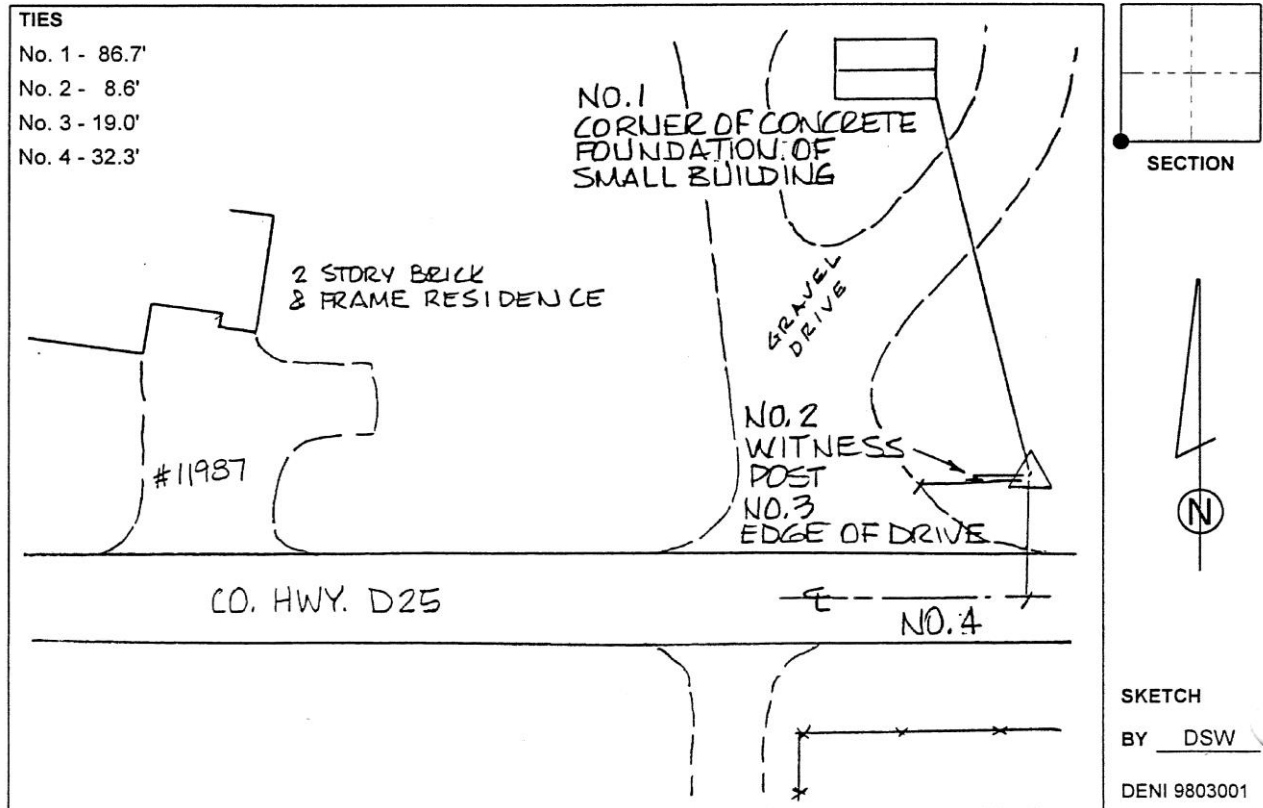
**Designation:** 892233 3 (Set by Deni Associates in 1998)

NAD 83(NA2011) Latitude: **N42°28'15.11820"** Longitude: **W93°27'32.97007"**  
NAVD 88 Ortho Height: **1143.210sft** Ellip. Ht: **1050.937sft** Geoid12B

**Iowa North Zone (1401)** Northing: **3634641.029sft** Easting: **4932268.801sft**  
Mapping Angle: **0°01'40"** Combination Scale Factor: **0.9999010049**

**IaRCS Zone 4** Northing: **8580238.879sft** Easting: **14870761.889sft**  
Mapping Angle: **0°55'44"** Combination Scale Factor: **0.9999953545**

**Monument Type:** 3-1/4" aluminum disk set in the top of a 12" dia. poured-in-place concrete monument.



*This document was prepared by Dan Corbin, Inc. on February 18<sup>th</sup>, 2019 for Hardin County, Iowa.*