

Hardin County, Iowa
Horizontal Datum: **NAD 83(NA2011)** - Vertical Datum: **NAVD 1988**
Iowa State Plane North Zone (1401)
Iowa Regional Coordinate System, Zone 4, Sioux City-Iowa Falls LCC
US Survey Feet
9/30/18

Point Name: **8006**

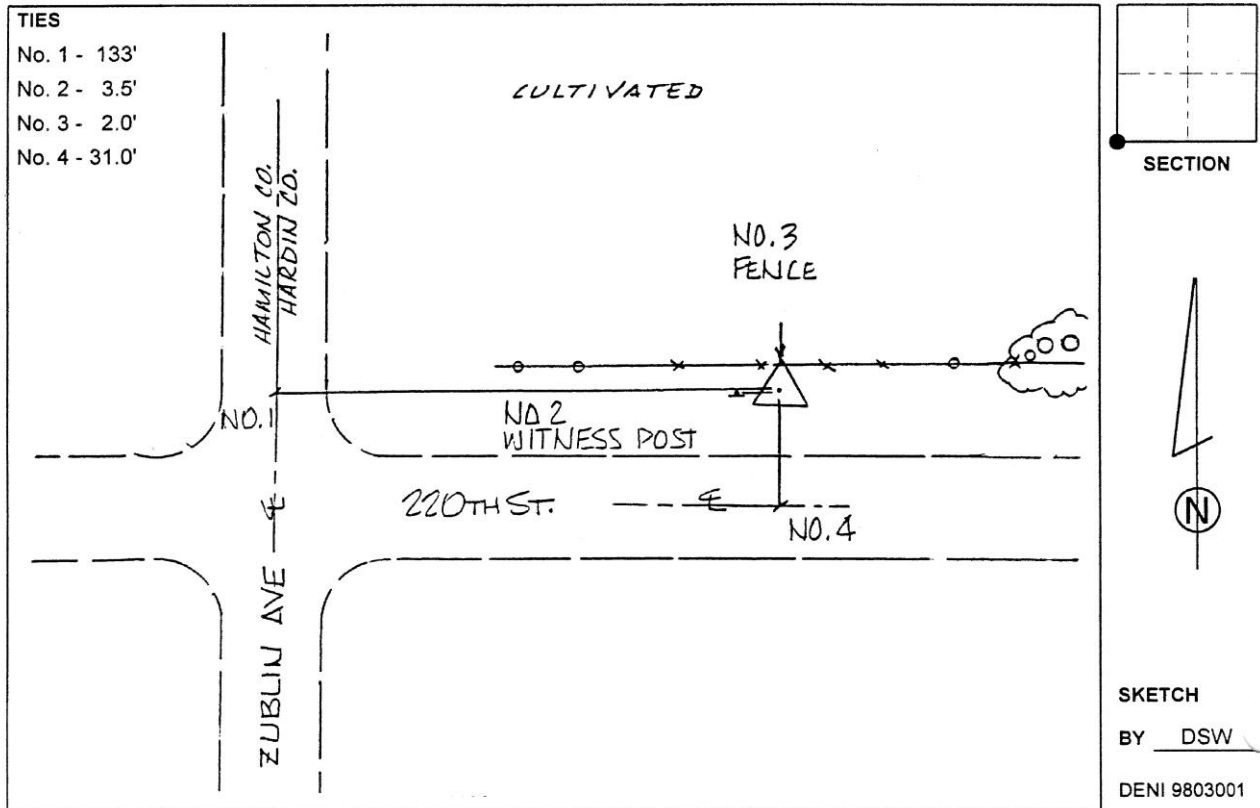
Designation: 882231 3 (Set by Deni Associates in 1998)

NAD 83(NA2011) Latitude: **N42°23'01.50103"** Longitude: **W93°27'44.66027"**
NAVD 88 Ortho Height: **1156.500sft** Ellip. Ht: **1063.274sft** **Geoid12B**

Iowa North Zone (1401) Northing: **3602893.552sft** Easting: **4931406.825sft**
Mapping Angle: **0°01'32"** Combination Scale Factor: **0.9999067563**

IaRCS Zone 4 Northing: **8548478.831sft** Easting: **14870399.370sft**
Mapping Angle: **0°55'36"** Combination Scale Factor: **0.9999975651**

Monument Type: 3-1/4" aluminum disk set in the top of a 12" dia. poured-in-place concrete monument.



This document was prepared by Dan Corbin, Inc. on February 18th, 2019 for Hardin County, Iowa.