

**Hardin County, Iowa**  
 Horizontal Datum: **NAD 83(NA2011)** - Vertical Datum: **NAVD 1988**  
 Iowa State Plane North Zone (1401)  
 Iowa Regional Coordinate System, Zone 4, Sioux City-Iowa Falls LCC  
 US Survey Feet  
**9/30/18**

Point Name: **8008**

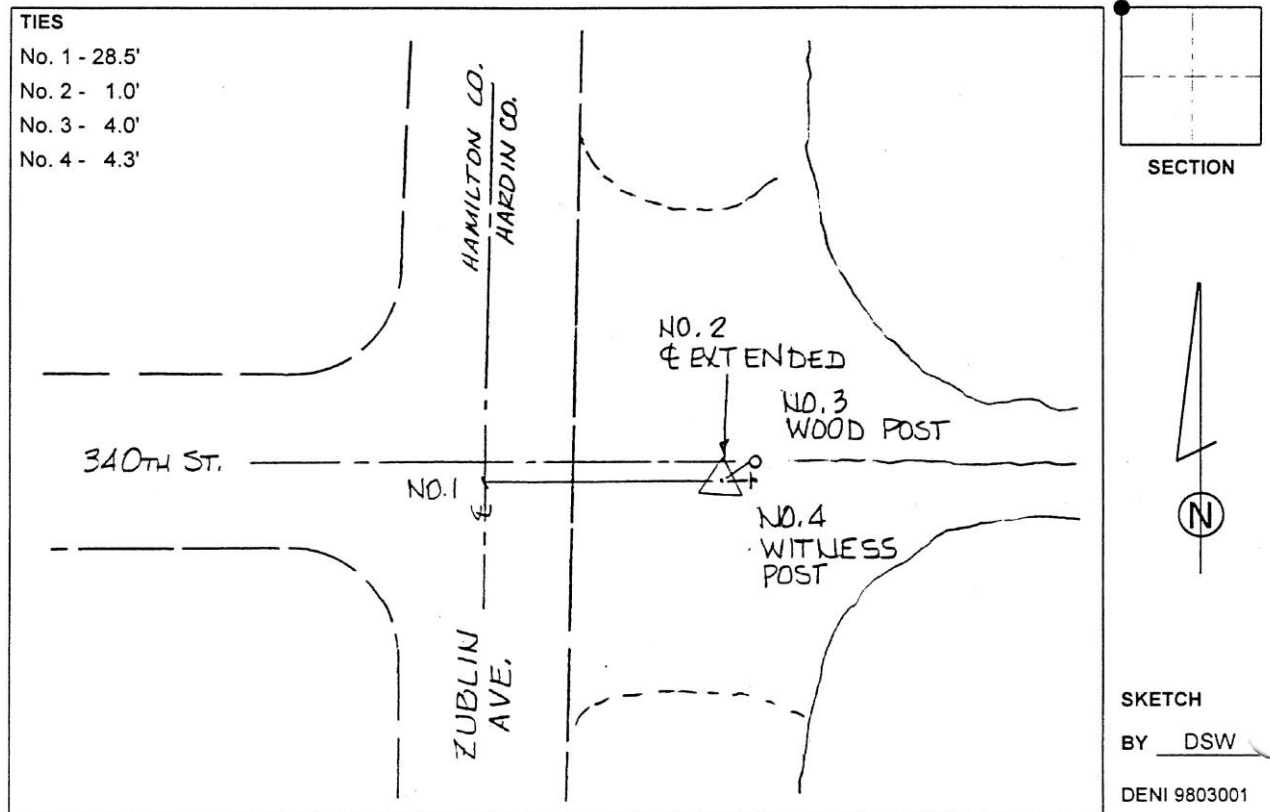
**Designation:** 862206 4 (Set by Deni Associates in 1998)

NAD 83(NA2011) Latitude: **N42°17'45.53569"** Longitude: **W93°27'46.06417"**  
 NAVD 88 Ortho Height: **1221.920sft** Ellip. Ht: **1127.751sft** **Geoid12B**

**Iowa North Zone (1401)** Northing: **3570908.983sft** Easting: **4931315.543sft**  
 Mapping Angle: **0°01'31"** Combination Scale Factor: **0.9999123815**

**IaRCS Zone 4** Northing: **8516493.935sft** Easting: **14870811.249sft**  
 Mapping Angle: **0°55'35"** Combination Scale Factor: **0.9999996279**

**Monument Type:** 3-1/4" aluminum disk set in the top of a 12" dia. poured-in-place concrete monument.



*This document was prepared by Dan Corbin, Inc. on February 18<sup>th</sup>, 2019 for Hardin County, Iowa.*