

Hardin County, Iowa
 Horizontal Datum: **NAD 83(NA2011)** - Vertical Datum: **NAVD 1988**
 Iowa State Plane North Zone (1401)
 Iowa Regional Coordinate System, Zone 4, Sioux City-Iowa Falls LCC
 US Survey Feet

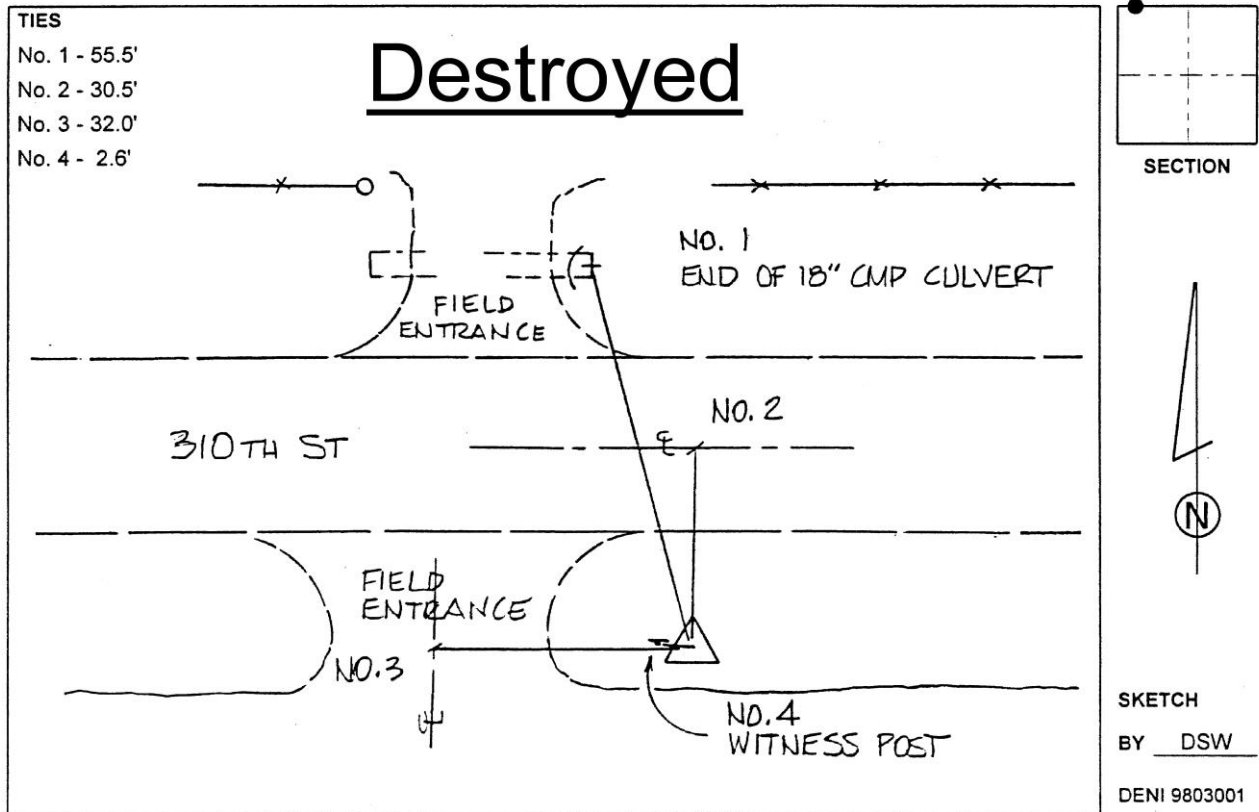
Point Name: **8009 (Destroyed)**

Designation: 862219 4 (Set by Deni Associates in 1998)

NAD 83(1996) Latitude: ~~N 42 15 09.60488~~ Longitude: ~~W 93 27 30.88160~~
 NAVD 88 Ortho Height: ~~1165.210~~sft Ellip. Ht: ~~1070.503~~sft

Iowa North Zone (1401) Northing: ~~3555125.030~~sft Easting: ~~4932464.280~~sft
 Mapping Angle: ~~0 01 41.06~~ Combination Scale Factor: ~~0.9999714400~~

Monument Type: 3-1/4" aluminum disk set in the top of a 12" dia. poured-in-place concrete monument.



This document was prepared by Dan Corbin, Inc. on February 18th, 2019 for Hardin County, Iowa.