

Hardin County, Iowa
 Horizontal Datum: **NAD 83(NA2011)** - Vertical Datum: **NAVD 1988**
 Iowa State Plane North Zone (1401)
 Iowa Regional Coordinate System, Zone 4, Sioux City-Iowa Falls LCC
 US Survey Feet
9/30/18

Point Name: **8010**

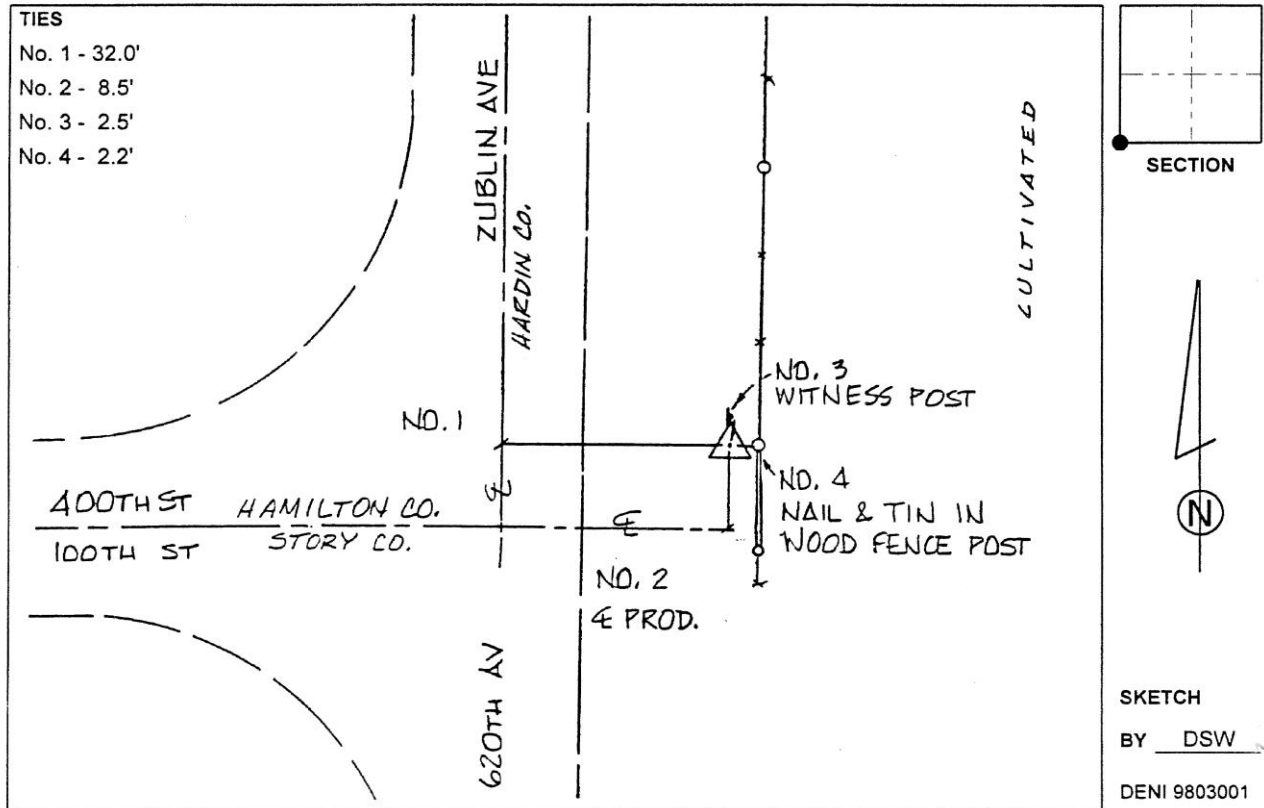
Designation: 862231 3 (Set by Deni Associates in 1998)

NAD 83(NA2011) Latitude: **N42°12'33.52002"** Longitude: **W93°27'46.60346"**
 NAVD 88 Ortho Height: **1115.000sft** Ellip. Ht: **1019.579sft** Geoid**12B**

Iowa North Zone (1401) Northing: **3539324.430sft** Easting: **4931288.858sft**
 Mapping Angle: **0°01'30"** Combination Scale Factor: **0.9999284307**

IaRCS Zone 4 Northing: **8484910.171sft** Easting: **14871281.431sft**
 Mapping Angle: **0°55'35"** Combination Scale Factor: **1.0000121650**

Monument Type: 3-1/4" aluminum disk set in the top of a 12" dia. poured-in-place concrete monument.



This document was prepared by Dan Corbin, Inc. on February 18th, 2019 for Hardin County, Iowa.