

Hardin County, Iowa
 Horizontal Datum: **NAD 83(NA2011)** - Vertical Datum: **NAVD 1988**
 Iowa State Plane North Zone (1401)
 Iowa Regional Coordinate System, Zone 4, Sioux City-Iowa Falls LCC
 US Survey Feet
9/30/18

Point Name: **8011**

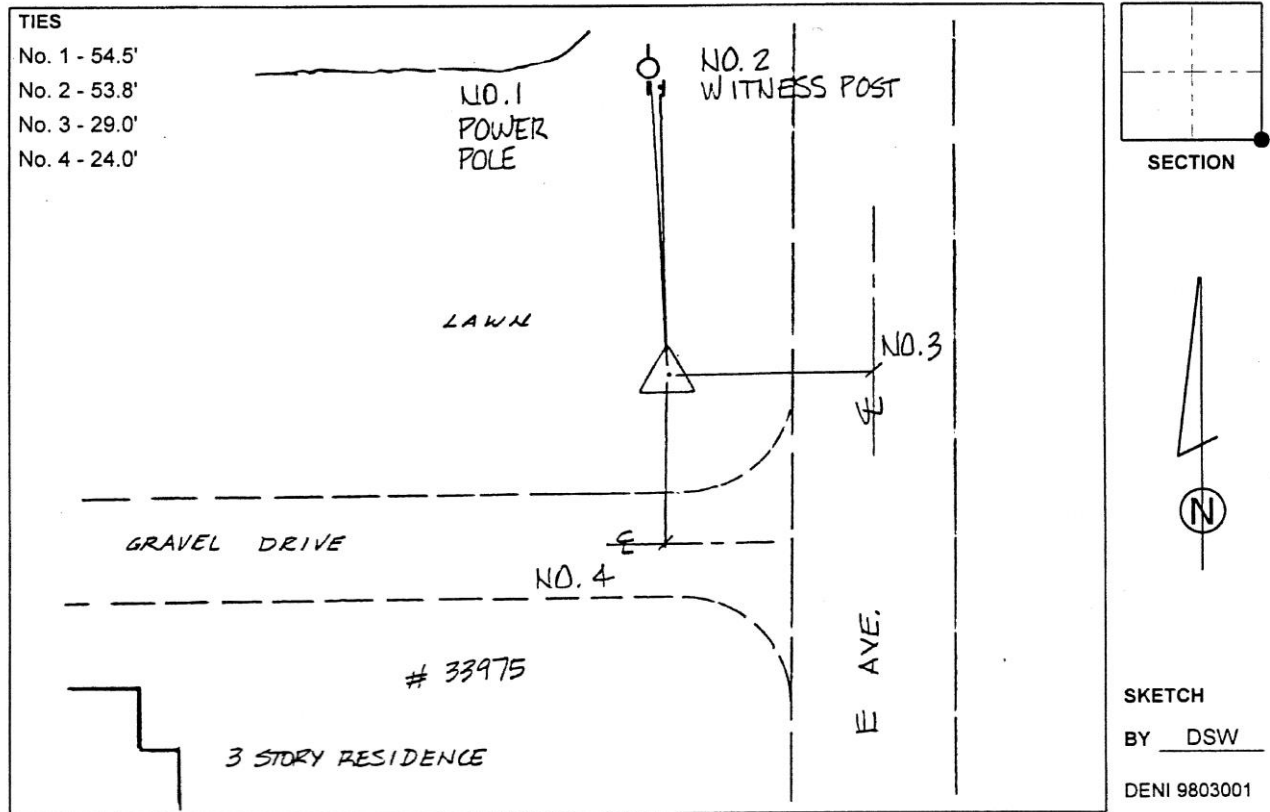
Designation: 862233 2 (Set by Deni Associates in 1998)

NAD 83(NA2011) Latitude: **N42°12'35.57085"** Longitude: **W93°24'18.56690"**
 NAVD 88 Ortho Height: **1153.580sft** Ellip. Ht: **1056.746sft** **Geoid12B**

Iowa North Zone (1401) Northing: **3539544.244sft** Easting: **4946944.570sft**
 Mapping Angle: **0°03'51"** Combination Scale Factor: **0.9999265752**

IaRCS Zone 4 Northing: **8485376.245sft** Easting: **14886933.059sft**
 Mapping Angle: **0°57'56"** Combination Scale Factor: **1.0000103324**

Monument Type: 3-1/4" aluminum disk set in the top of a 12" dia. poured-in-place concrete monument.



This document was prepared by Dan Corbin, Inc. on February 18th, 2019 for Hardin County, Iowa.