

Hardin County, Iowa
 Horizontal Datum: **NAD 83(NA2011)** - Vertical Datum: **NAVD 1988**
 Iowa State Plane North Zone (1401)
 Iowa Regional Coordinate System, Zone 4, Sioux City-Iowa Falls LCC
 US Survey Feet
9/30/18

Point Name: **8012**

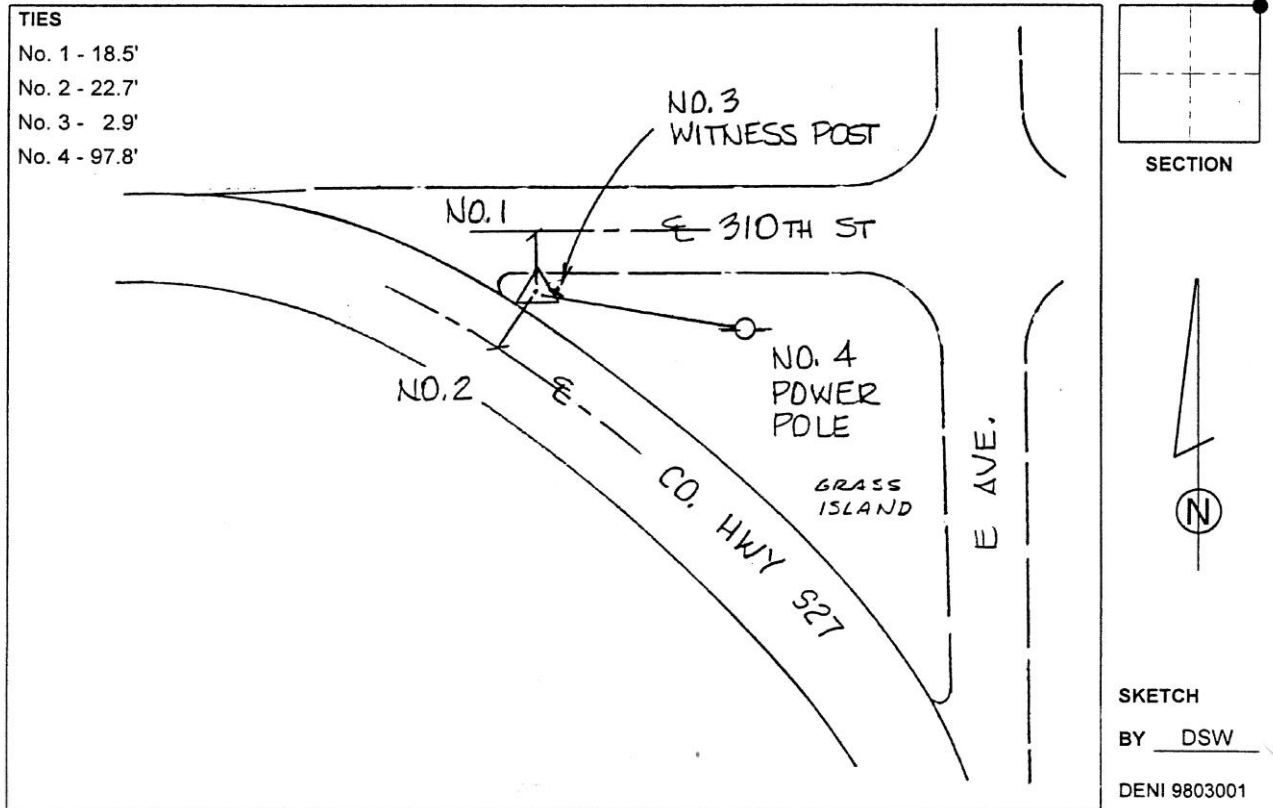
Designation: 862221 1 (Set by Deni Associates in 1998)

NAD 83(NA2011) Latitude: **N42°15'09.73069"** Longitude: **W93°24'21.55781"**
 NAVD 88 Ortho Height: **1202.250sft** Ellip. Ht: **1106.018sft** **Geoid12B**

Iowa North Zone (1401) Northing: **3555149.167sft** Easting: **4946702.135sft**
 Mapping Angle: **0°03'49"** Combination Scale Factor: **0.9999185695**

IaRCS Zone 4 Northing: **8500976.745sft** Easting: **14886445.175sft**
 Mapping Angle: **0°57'54"** Combination Scale Factor: **1.0000040614**

Monument Type: 3-1/4" aluminum disk set in the top of a 12" dia. poured-in-place concrete monument.



This document was prepared by Dan Corbin, Inc. on February 18th, 2019 for Hardin County, Iowa.