

**Hardin County, Iowa**  
Horizontal Datum: **NAD 83(NA2011)** - Vertical Datum: **NAVD 1988**  
Iowa State Plane North Zone (1401)  
Iowa Regional Coordinate System, Zone 4, Sioux City-Iowa Falls LCC  
US Survey Feet  
**9/30/18**

Point Name: **8014**

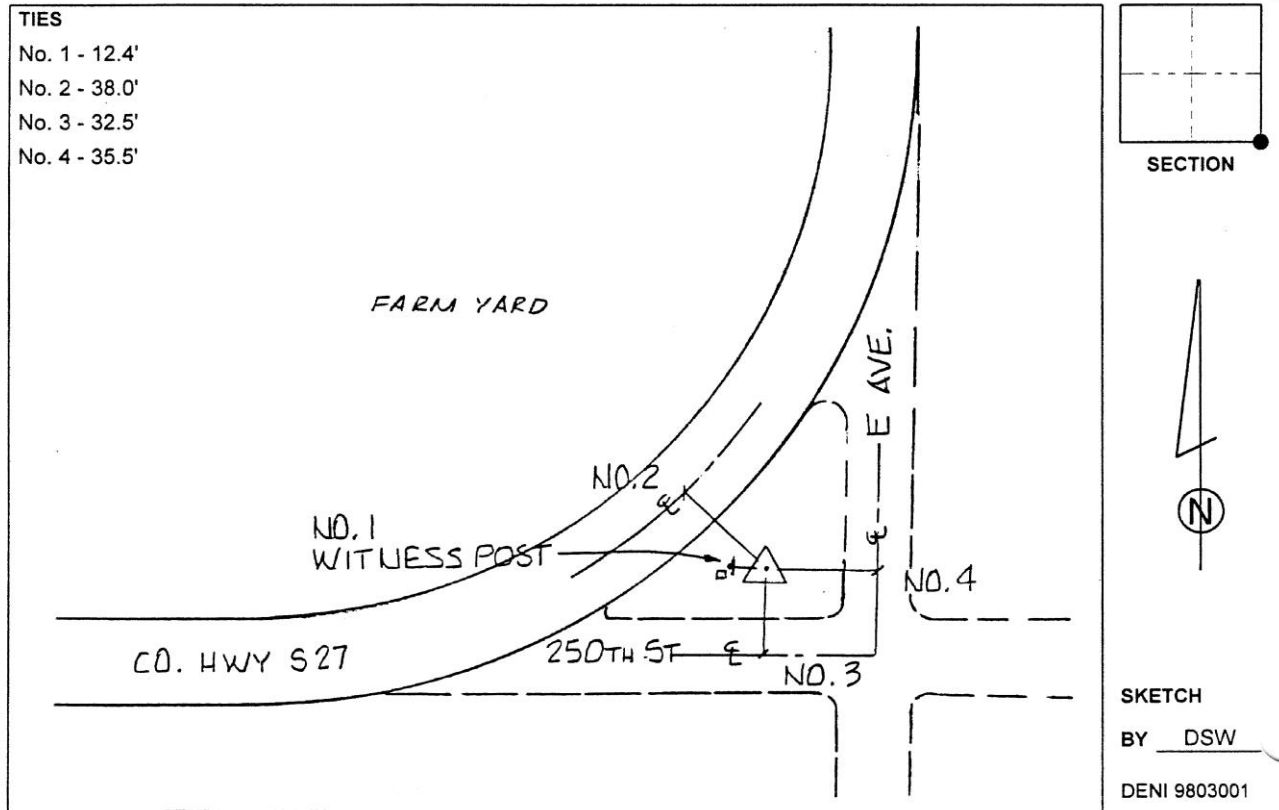
**Designation:** 872216 2 (Set by Deni Associates in 1998)

NAD 83(NA2011) Latitude: **N42°20'22.15306"** Longitude: **W93°24'19.39824"**  
NAVD 88 Ortho Height: **1151.590sft** Ellip. Ht: **1056.274sft** **Geoid12B**

**Iowa North Zone (1401)** Northing: **3586775.111sft** Easting: **4946829.149sft**  
Mapping Angle: **0°03'51"** Combination Scale Factor: **0.9999111913**

**IaRCS Zone 4** Northing: **8532603.534sft** Easting: **14886074.722sft**  
Mapping Angle: **0°57'55"** Combination Scale Factor: **1.0000002030**

**Monument Type:** 3-1/4" aluminum disk set in the top of a 12" dia. poured-in-place concrete monument.



*This document was prepared by Dan Corbin, Inc. on February 18<sup>th</sup>, 2019 for Hardin County, Iowa.*