

**Hardin County, Iowa**  
 Horizontal Datum: **NAD 83(NA2011)** - Vertical Datum: **NAVD 1988**  
 Iowa State Plane North Zone (1401)  
 Iowa Regional Coordinate System, Zone 4, Sioux City-Iowa Falls LCC  
 US Survey Feet  
**9/30/18**

Point Name: **8016**

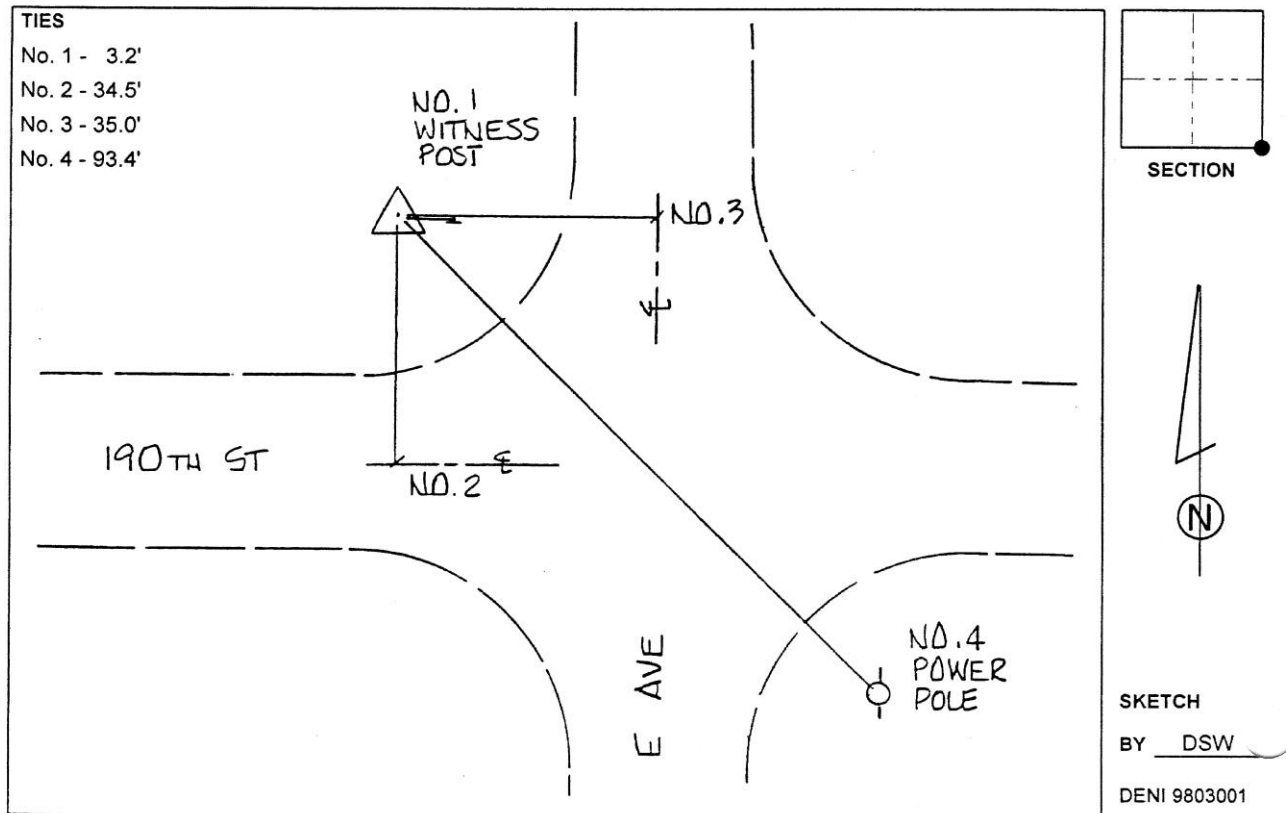
**Designation:** 882216 2 (Set by Deni Associates in 1998)

NAD 83(NA2011) Latitude: **N42°25'37.12357"** Longitude: **W93°24'18.11527"**  
 NAVD 88 Ortho Height: **1169.720sft** Ellip. Ht: **1075.297sft** **Geoid12B**

**Iowa North Zone (1401)** Northing: **3618659.135sft** Easting: **4946889.683sft**  
 Mapping Angle: **0°03'52"** Combination Scale Factor: **0.9999027483**

**IaRCS Zone 4** Northing: **8564487.461sft** Easting: **14885633.731sft**  
 Mapping Angle: **0°57'56"** Combination Scale Factor: **0.9999953134**

**Monument Type:** 3-1/4" aluminum disk set in the top of a 12" dia. poured-in-place concrete monument.



*This document was prepared by Dan Corbin, Inc. on February 18<sup>th</sup>, 2019 for Hardin County, Iowa.*