

**Hardin County, Iowa**  
 Horizontal Datum: **NAD 83(NA2011)** - Vertical Datum: **NAVD 1988**  
 Iowa State Plane North Zone (1401)  
 Iowa Regional Coordinate System, Zone 4, Sioux City-Iowa Falls LCC  
 US Survey Feet  
**9/30/18**

Point Name: **8017**

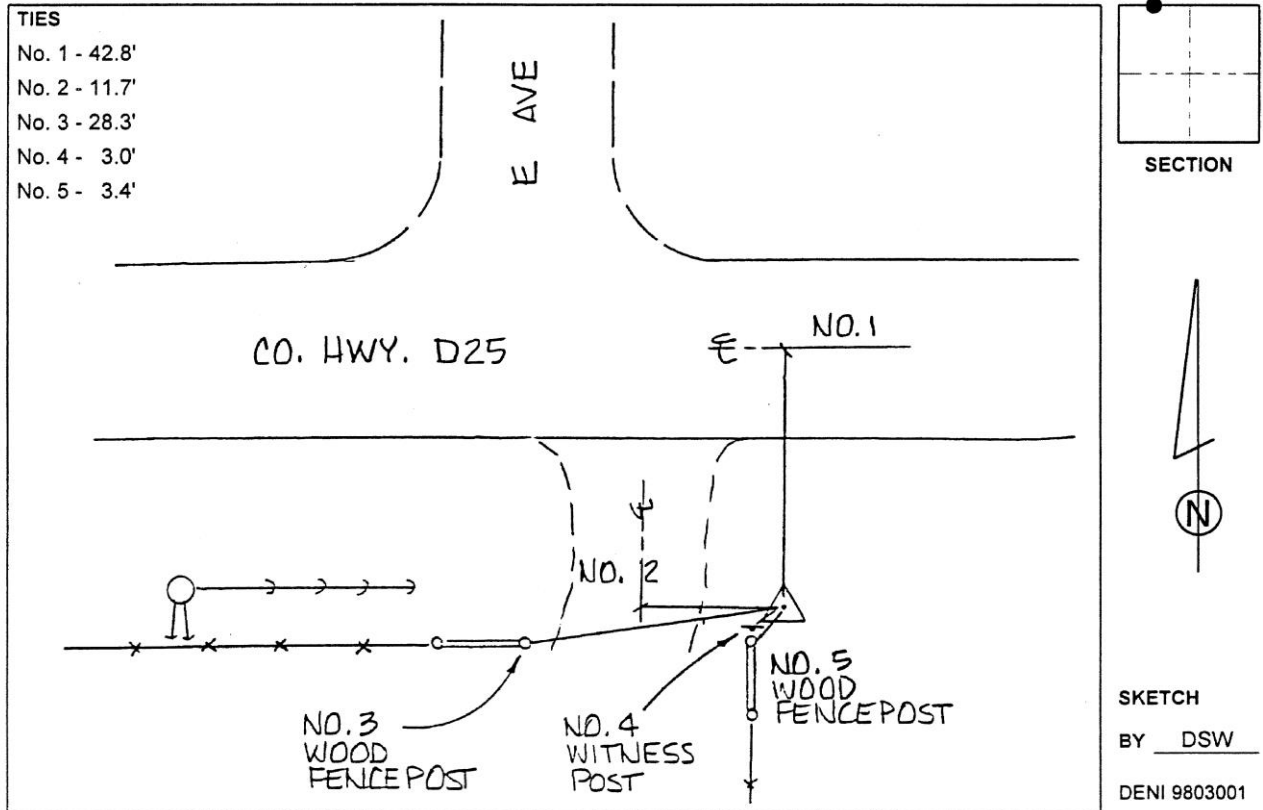
**Designation:** 882203 4 (Set by Deni Associates in 1998)

NAD 83(NA2011) Latitude: **N42°28'13.79083"** Longitude: **W93°24'01.48072"**  
 NAVD 88 Ortho Height: **1155.580sft** Ellip. Ht: **1061.557sft** Geoid**12B**

**Iowa North Zone (1401)** Northing: **3634519.825sft** Easting: **4948118.509sft**  
 Mapping Angle: **0°04'03"** Combination Scale Factor: **0.9999005193**

**IaRCS Zone 4** Northing: **8580367.000sft** Easting: **14886613.039sft**  
 Mapping Angle: **0°58'07"** Combination Scale Factor: **0.9999948539**

**Monument Type:** 3-1/4" aluminum disk set in the top of a 12" dia. poured-in-place concrete monument.



*This document was prepared by Dan Corbin, Inc. on February 18<sup>th</sup>, 2019 for Hardin County, Iowa.*