

**Hardin County, Iowa**  
 Horizontal Datum: **NAD 83(NA2011)** - Vertical Datum: **NAVD 1988**  
 Iowa State Plane North Zone (1401)  
 Iowa Regional Coordinate System, Zone 4, Sioux City-Iowa Falls LCC  
 US Survey Feet  
**9/30/18**

Point Name: **8018**

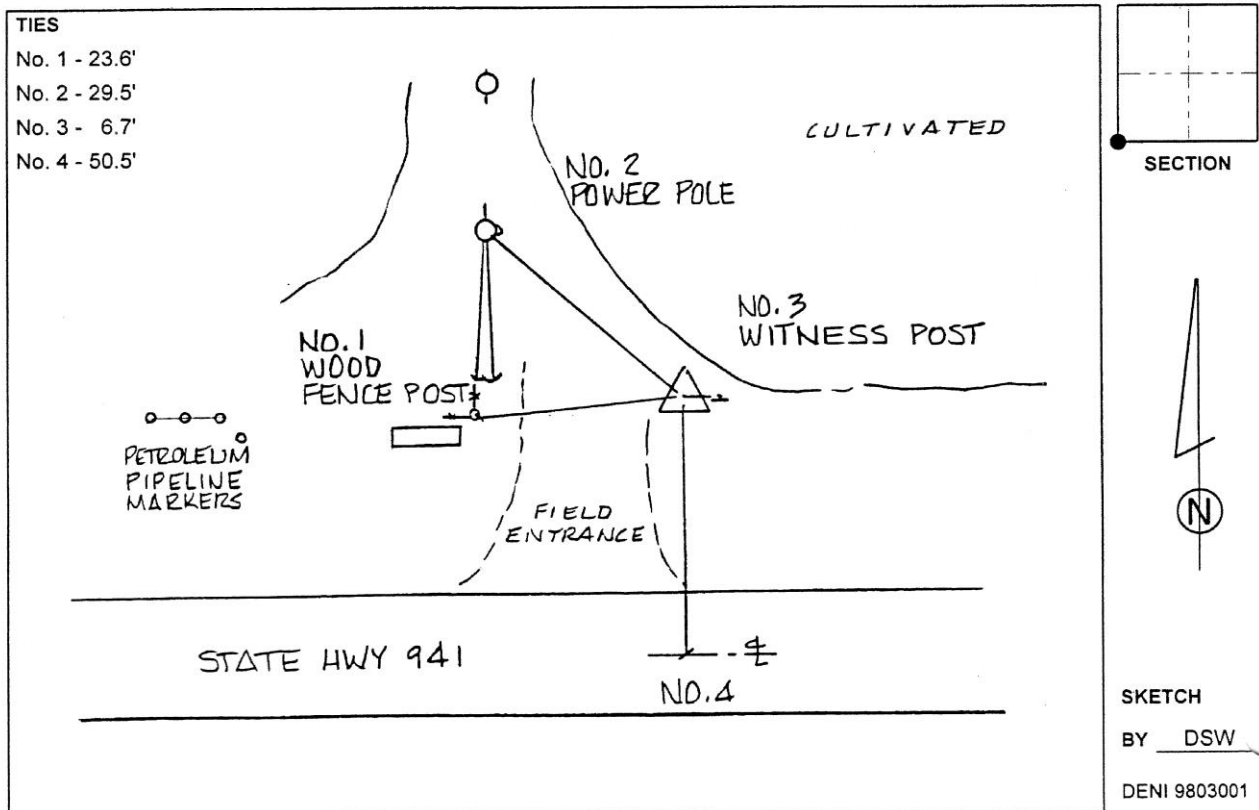
**Designation:** 892215 3 (Set by Deni Associates in 1998)

NAD 83(NA2011) Latitude: **N42°30'51.92063"** Longitude: **W93°26'25.06901"**  
 NAVD 88 Ortho Height: **1154.670sft** Ellip. Ht: **1062.436sft** Geoid**12B**

**Iowa North Zone (1401)** Northing: **3650517.080sft** Easting: **4937346.270sft**  
 Mapping Angle: **0°02'26"** Combination Scale Factor: **0.9998981456**

**IaRCS Zone 4** Northing: **8596194.351sft** Easting: **14875589.468sft**  
 Mapping Angle: **0°56'30"** Combination Scale Factor: **0.9999942674**

**Monument Type:** 3-1/4" aluminum disk set in the top of a 12" dia. poured-in-place concrete monument.



*This document was prepared by Dan Corbin, Inc. on February 18<sup>th</sup>, 2019 for Hardin County, Iowa.*