

Hardin County, Iowa
 Horizontal Datum: **NAD 83(NA2011)** - Vertical Datum: **NAVD 1988**
 Iowa State Plane North Zone (1401)
 Iowa Regional Coordinate System, Zone 4, Sioux City-Iowa Falls LCC
 US Survey Feet

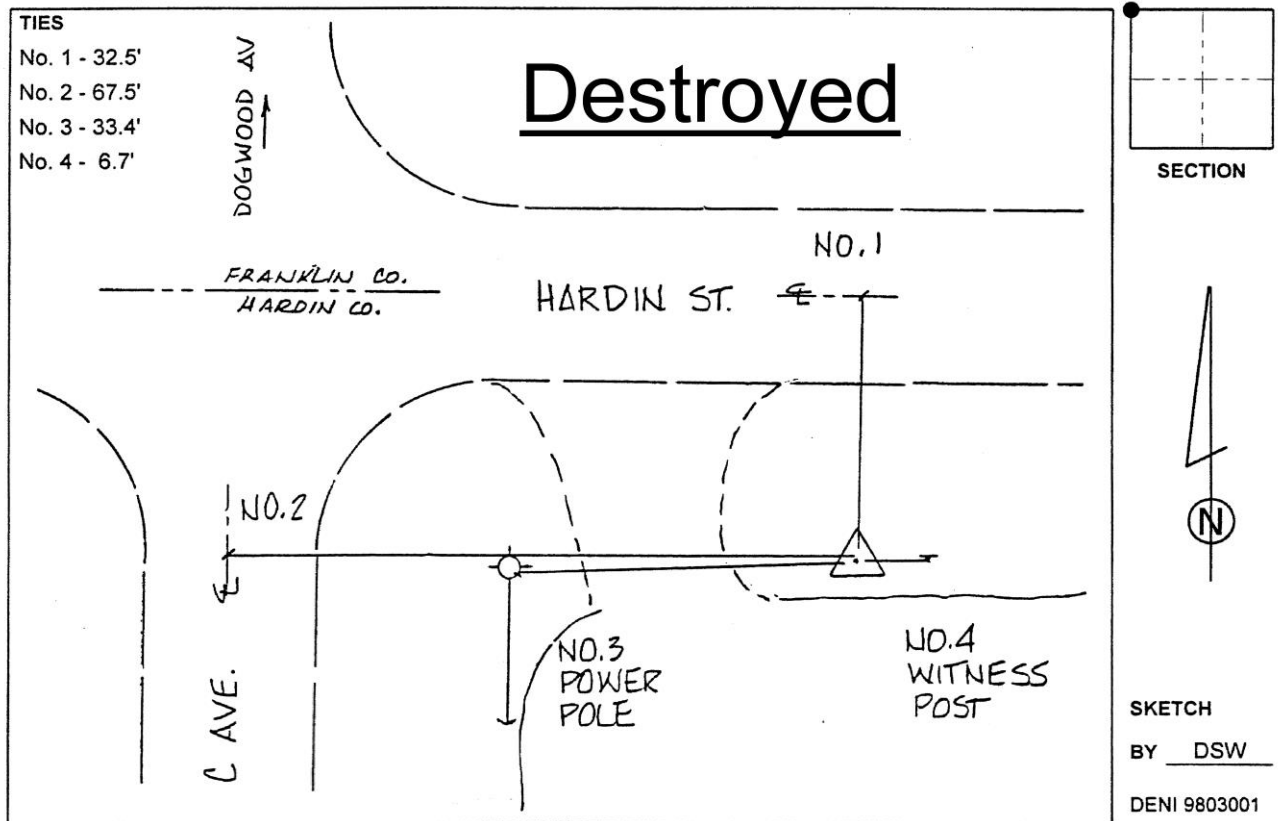
Point Name: **8019 (Destroyed)**

Designation: 892203 4 (Set by Deni Associates in 1998)

NAD 83(1996) Latitude: ~~N 42 33 26.83294~~ Longitude: ~~W 93 26 21.53825~~
 NAVD 88 Ortho Height: ~~1147.330~~sft Ellip. Ht: ~~1055.805~~sft

Iowa North Zone (1401) Northing: ~~3666199.040~~sft Easting: ~~4937599.430~~sft
 Mapping Angle: ~~0 02 28.06~~ Combination Scale Factor: ~~0.9999472100~~

Monument Type: 3-1/4" aluminum disk set in the top of a 12" dia. poured-in-place concrete monument.



This document was prepared by Dan Corbin, Inc. on February 18th, 2019 for Hardin County, Iowa.