

**Hardin County, Iowa**  
 Horizontal Datum: **NAD 83(NA2011)** - Vertical Datum: **NAVD 1988**  
 Iowa State Plane North Zone (1401)  
 Iowa Regional Coordinate System, Zone 4, Sioux City-Iowa Falls LCC  
 US Survey Feet  
**9/30/18**

Point Name: **8020**

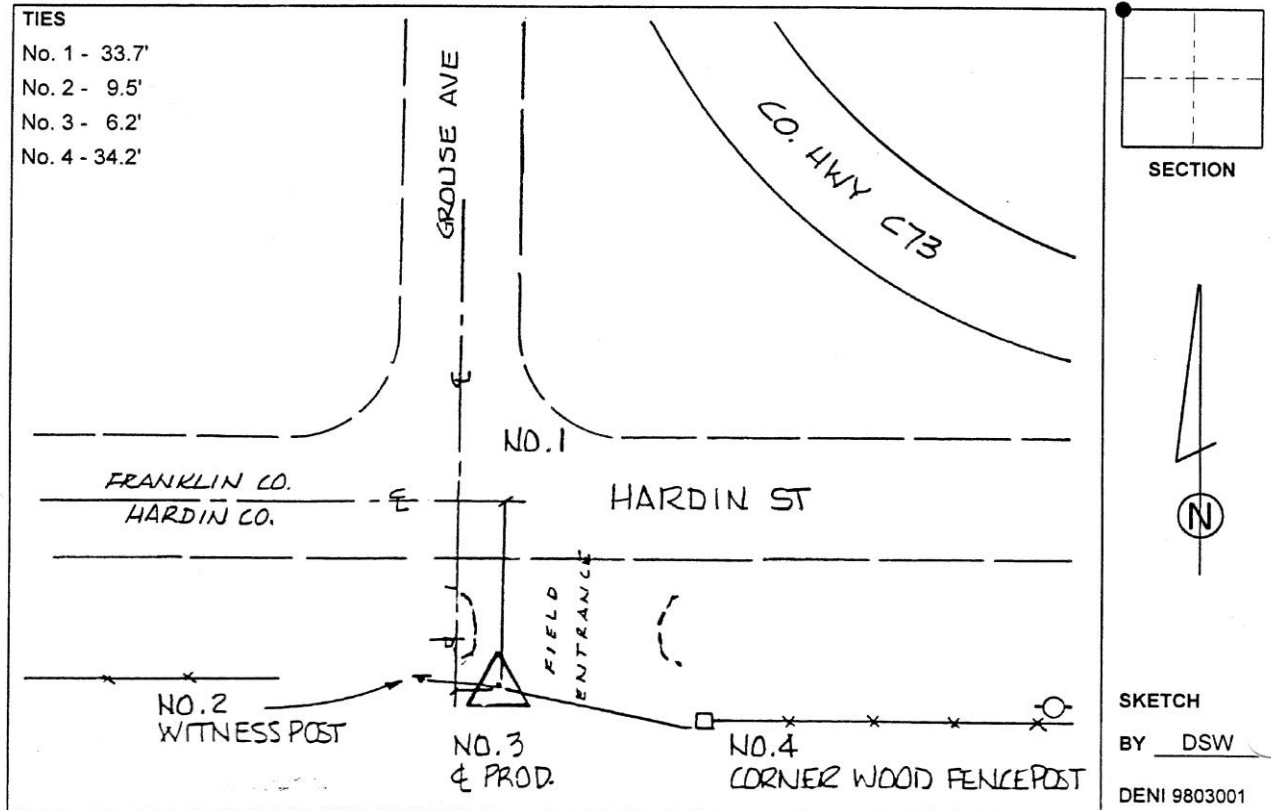
**Designation:** 892106 4 (Set by Deni Associates in 1998)

NAD 83(NA2011) Latitude: **N42°33'26.80334"** Longitude: **W93°22'51.17234"**  
 NAVD 88 Ortho Height: **1130.178sft** Ellip. Ht: **1036.770sft** **Geoid12B**

**Iowa North Zone (1401)** Northing: **3666212.790sft** Easting: **4953342.980sft**  
 Mapping Angle: **0°04'51"** Combination Scale Factor: **0.9998976547**

**IaRCS Zone 4** Northing: **8612141.268sft** Easting: **14891338.859sft**  
 Mapping Angle: **0°58'55"** Combination Scale Factor: **0.9999955285**

**Monument Type:** 3-1/4" aluminum disk set in the top of a 12" dia. poured-in-place concrete monument.



*This document was prepared by Dan Corbin, Inc. on February 18<sup>th</sup>, 2019 for Hardin County, Iowa.*