

Hardin County, Iowa
 Horizontal Datum: **NAD 83(NA2011)** - Vertical Datum: **NAVD 1988**
 Iowa State Plane North Zone (1401)
 Iowa Regional Coordinate System, Zone 4, Sioux City-Iowa Falls LCC
 US Survey Feet
9/30/18

Point Name: **8021**

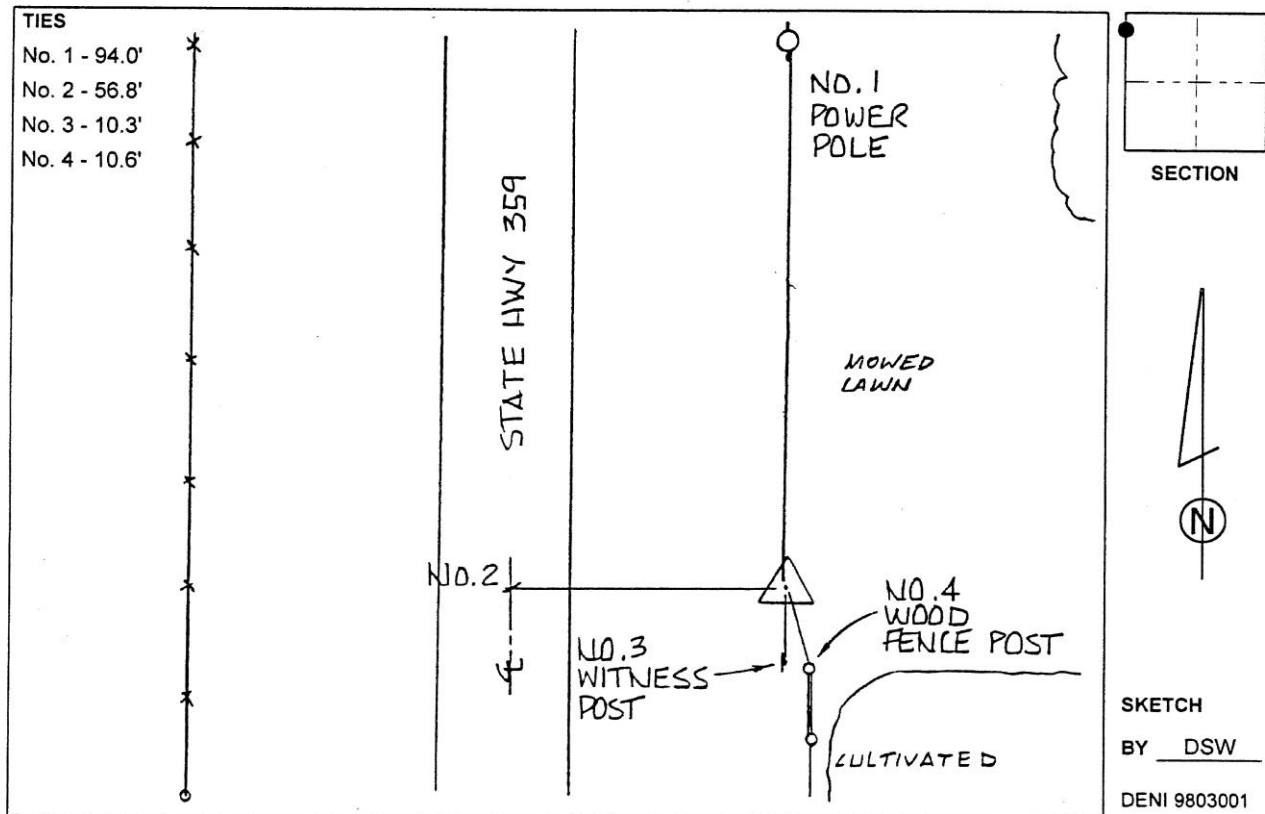
Designation: 892119 4 (Set by Deni Associates in 1998)

NAD 83(NA2011) Latitude: **N42°30'38.16275"** Longitude: **W93°22'50.76784"**
 NAVD 88 Ortho Height: **1162.769sft** Ellip. Ht: **1068.681sft** Geoid12B

Iowa North Zone (1401) Northing: **3649141.359sft** Easting: **4953397.329sft**
 Mapping Angle: **0°04'51"** Combination Scale Factor: **0.9998980268**

IaRCS Zone 4 Northing: **8595071.149sft** Easting: **14891661.722sft**
 Mapping Angle: **0°58'55"** Combination Scale Factor: **0.9999939931**

Monument Type: 3-1/4" aluminum disk set in the top of a 12" dia. poured-in-place concrete monument.



This document was prepared by Dan Corbin, Inc. on February 18th, 2019 for Hardin County, Iowa.