

**Hardin County, Iowa**  
Horizontal Datum: **NAD 83(NA2011)** - Vertical Datum: **NAVD 1988**  
Iowa State Plane North Zone (1401)  
Iowa Regional Coordinate System, Zone 4, Sioux City-Iowa Falls LCC  
US Survey Feet  
**9/30/18**

Point Name: **8022**

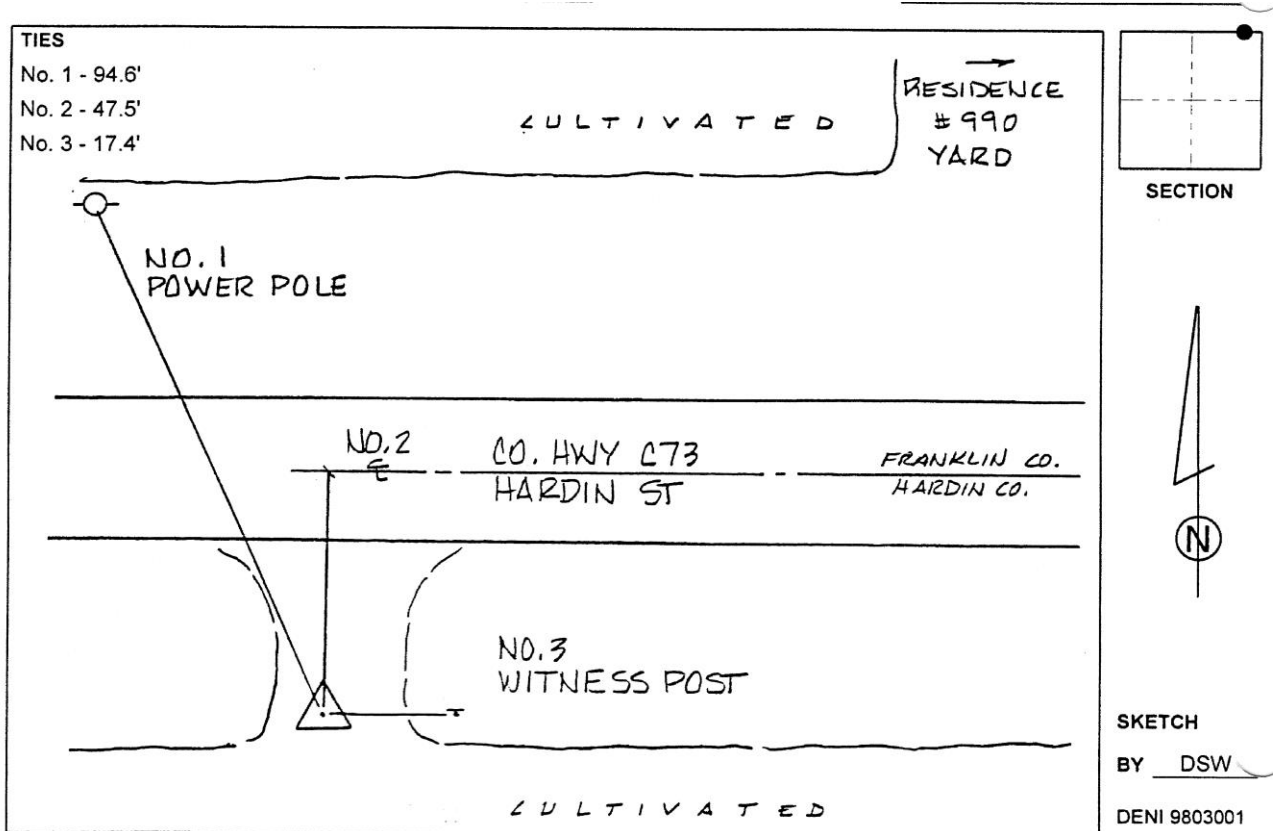
**Designation:** 892104 1 (Set by Deni Associates in 1998)

NAD 83(NA2011) Latitude: **N42°33'26.02220"** Longitude: **W93°19'26.91236"**  
NAVD 88 Ortho Height: **1166.069sft** Ellip. Ht: **1070.819sft** Geoid12B

**Iowa North Zone (1401)** Northing: **3666160.384sft** Easting: **4968629.713sft**  
Mapping Angle: **0°07'09"** Combination Scale Factor: **0.9998960346**

**IaRCS Zone 4** Northing: **8612329.295sft** Easting: **14906626.022sft**  
Mapping Angle: **1°01'13"** Combination Scale Factor: **0.9999938994**

**Monument Type:** 3-1/4" aluminum disk set in the top of a 12" dia. poured-in-place concrete monument.



*This document was prepared by Dan Corbin, Inc. on February 18<sup>th</sup>, 2019 for Hardin County, Iowa.*