

Hardin County, Iowa
 Horizontal Datum: **NAD 83(NA2011)** - Vertical Datum: **NAVD 1988**
 Iowa State Plane North Zone (1401)
 Iowa Regional Coordinate System, Zone 4, Sioux City-Iowa Falls LCC
 US Survey Feet
9/30/18

Point Name: **8023**

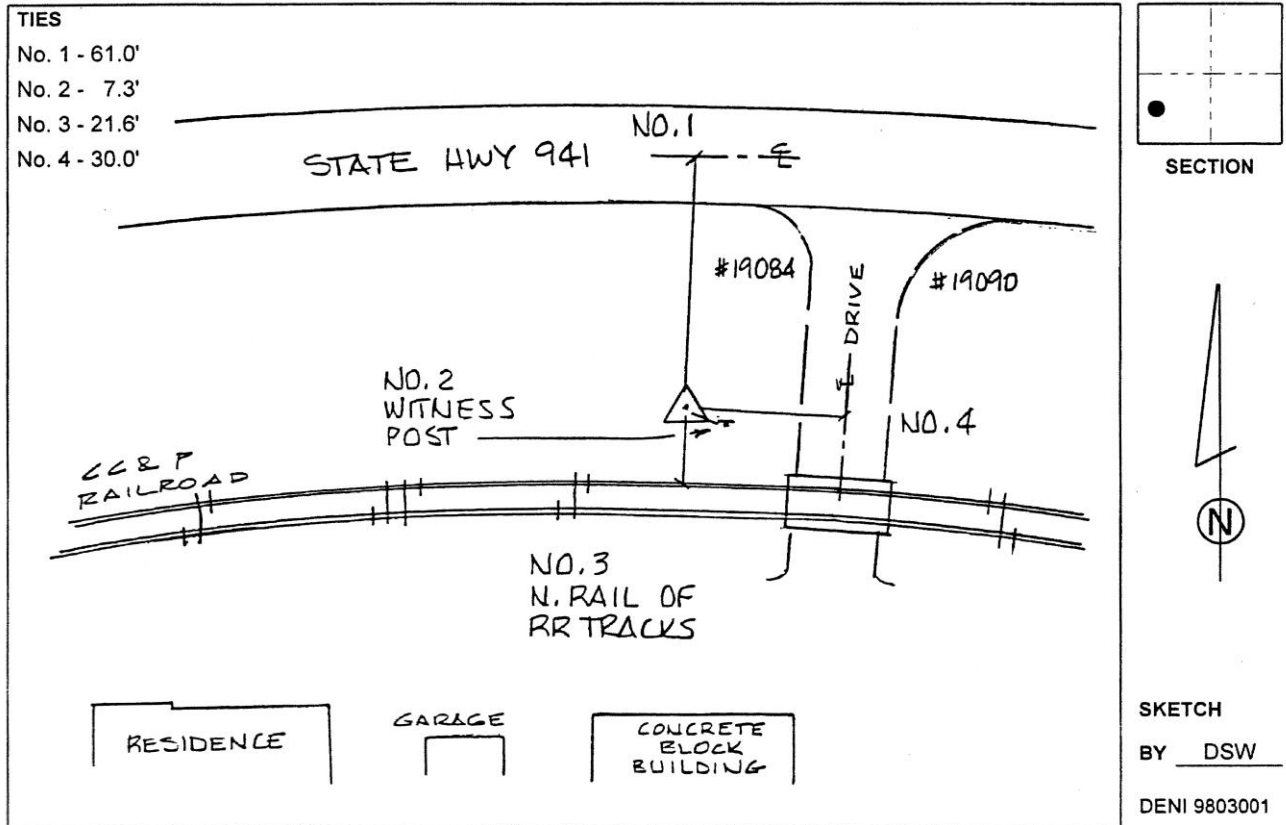
Designation: 892115 3 (Set by Deni Associates in 1998)

NAD 83(NA2011) Latitude: **N42°31'02.63193"** Longitude: **W93°19'10.76799"**
 NAVD 88 Ortho Height: **1101.560sft** Ellip. Ht: **1005.560sft** **Geoid12B**

Iowa North Zone (1401) Northing: **3651647.557sft** Easting: **4969868.906sft**
 Mapping Angle: **0°07'20"** Combination Scale Factor: **0.9999007272**

IaRCS Zone 4 Northing: **8597836.343sft** Easting: **14908093.428sft**
 Mapping Angle: **1°01'24"** Combination Scale Factor: **0.9999969704**

Monument Type: 3-1/4" aluminum disk set in the top of a 12" dia. poured-in-place concrete monument.



This document was prepared by Dan Corbin, Inc. on February 18th, 2019 for Hardin County, Iowa.