

Hardin County, Iowa
 Horizontal Datum: **NAD 83(NA2011)** - Vertical Datum: **NAVD 1988**
 Iowa State Plane North Zone (1401)
 Iowa Regional Coordinate System, Zone 4, Sioux City-Iowa Falls LCC
 US Survey Feet
9/30/18

Point Name: **8024**

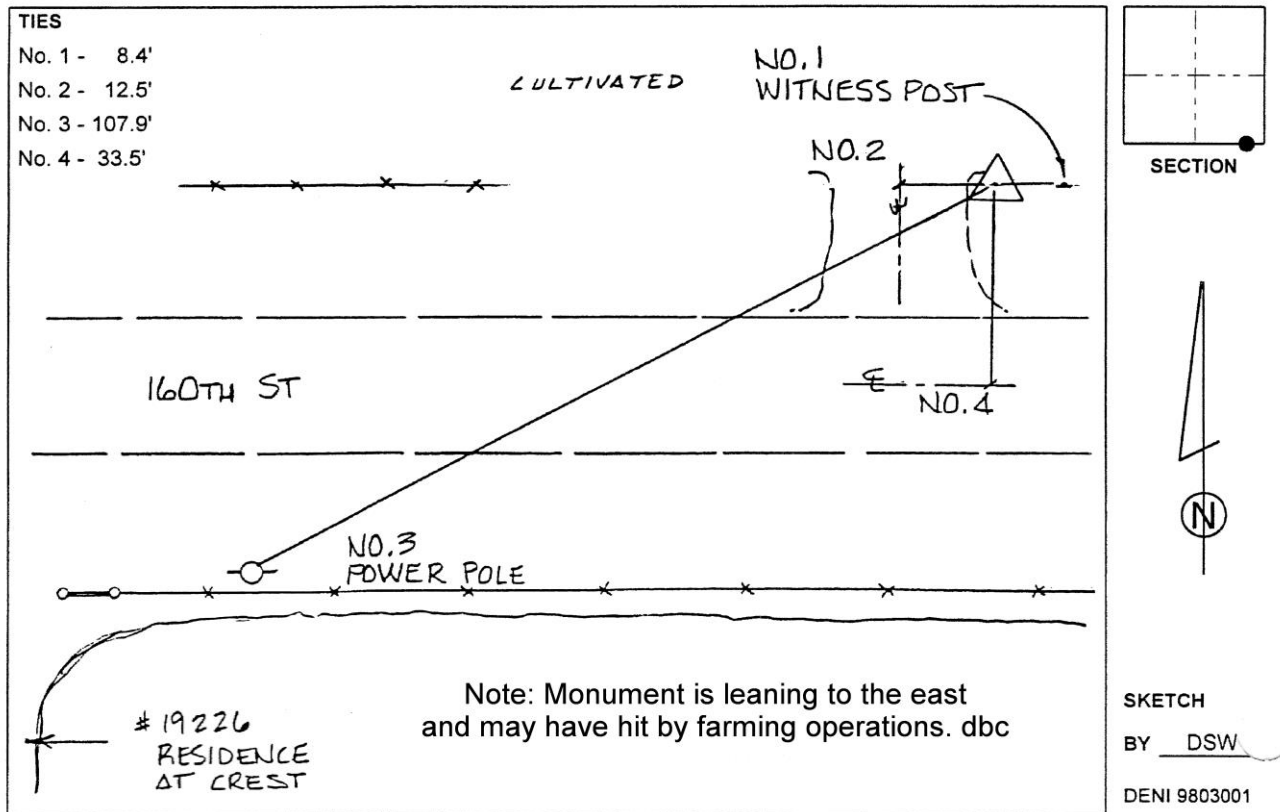
Designation: 892133 2 (Set by Deni Associates in 1998)

NAD 83(NA2011) Latitude: **N42°28'14.02229"** Longitude: **W93°19'26.73681"**
 NAVD 88 Ortho Height: **1181.728sft** Ellip. Ht: **1085.286sft** **Geoid12B**

Iowa North Zone (1401) Northing: **3634576.804sft** Easting: **4968708.569sft**
 Mapping Angle: **0°07'09"** Combination Scale Factor: **0.9998993813**

IaRCS Zone 4 Northing: **8580747.826sft** Easting: **14907201.599sft**
 Mapping Angle: **1°01'13"** Combination Scale Factor: **0.9999937184**

Monument Type: 3-1/4" aluminum disk set in the top of a 12" dia. poured-in-place concrete monument.



This document was prepared by Dan Corbin, Inc. on February 18th, 2019 for Hardin County, Iowa.