

**Hardin County, Iowa**  
 Horizontal Datum: **NAD 83(NA2011)** - Vertical Datum: **NAVD 1988**  
 Iowa State Plane North Zone (1401)  
 Iowa Regional Coordinate System, Zone 4, Sioux City-Iowa Falls LCC  
 US Survey Feet

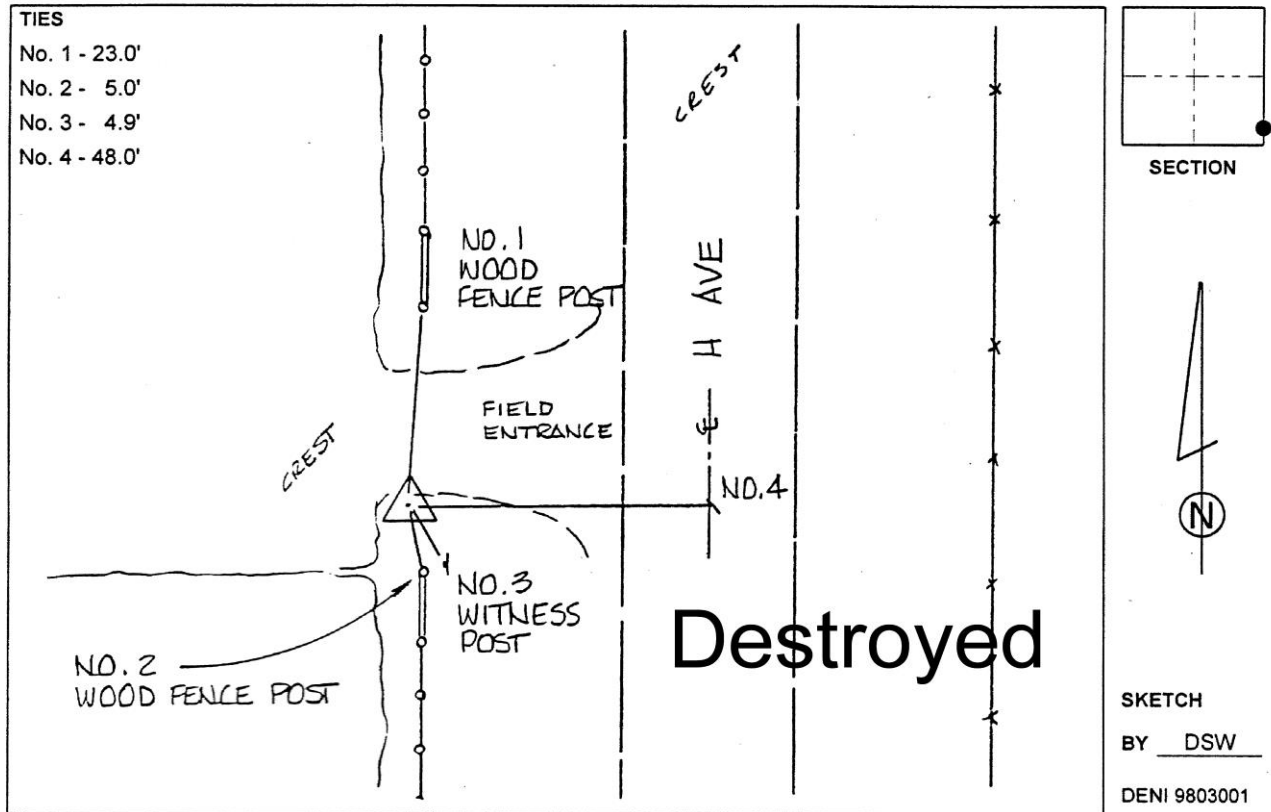
Point Name: **8025 (Destroyed)**

**Designation:** 882213 2 (Set by Deni Associates in 1998)

NAD 83(1996) Latitude: ~~N 42 25 40.83320~~ Longitude: ~~W 93 20 48.69996~~  
 NAVD 88 Ortho Height: ~~1137.950~~sft Ellip. Ht: ~~1041.960~~sft

**Iowa North Zone (1401)** Northing: ~~3619057.700~~sft Easting: ~~4962594.110~~sft  
 Mapping Angle: ~~0 06 13.64~~ Combination Scale Factor: ~~0.9999540700~~

**Monument Type:** 3-1/4" aluminum disk set in the top of a 12" dia. poured-in-place concrete monument.



*This document was prepared by Dan Corbin, Inc. on February 18<sup>th</sup>, 2019 for Hardin County, Iowa.*