

Hardin County, Iowa
 Horizontal Datum: **NAD 83(NA2011)** - Vertical Datum: **NAVD 1988**
 Iowa State Plane North Zone (1401)
 Iowa Regional Coordinate System, Zone 4, Sioux City-Iowa Falls LCC
 US Survey Feet
9/30/18

Point Name: **8028**

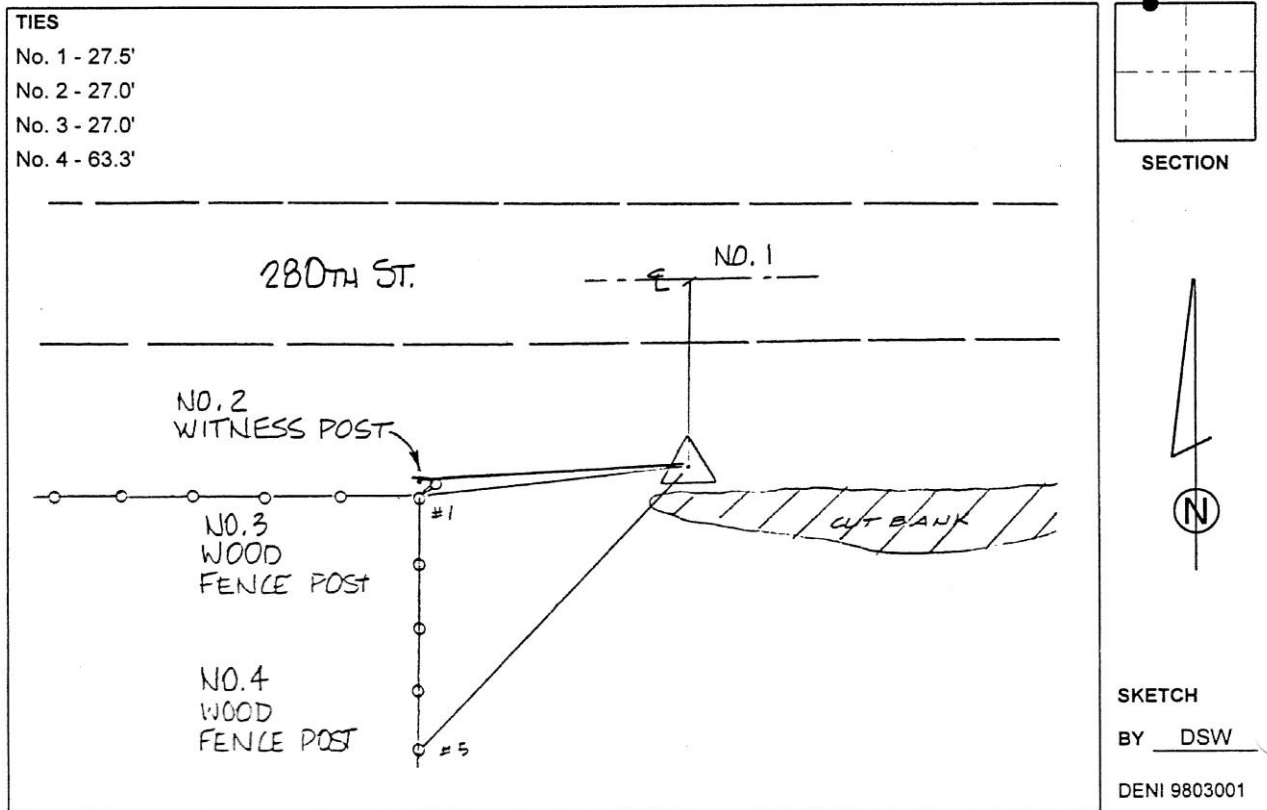
Designation: 862106 4 (Set by Deni Associates in 1998)

NAD 83(NA2011) Latitude: **N42°17'45.21928"** Longitude: **W93°20'30.56476"**
 NAVD 88 Ortho Height: **1087.480sft** Ellip. Ht: **989.880sft** Geoid12B

Iowa North Zone (1401) Northing: **3570914.773sft** Easting: **4964044.222sft**
 Mapping Angle: **0°06'26"** Combination Scale Factor: **0.9999189813**

IaRCS Zone 4 Northing: **8517014.530sft** Easting: **14903538.644sft**
 Mapping Angle: **1°00'30"** Combination Scale Factor: **1.0000062247**

Monument Type: 3-1/4" aluminum disk set in the top of a 12" dia. poured-in-place concrete monument.



This document was prepared by Dan Corbin, Inc. on February 18th, 2019 for Hardin County, Iowa.