

Hardin County, Iowa
 Horizontal Datum: **NAD 83(NA2011)** - Vertical Datum: **NAVD 1988**
 Iowa State Plane North Zone (1401)
 Iowa Regional Coordinate System, Zone 4, Sioux City-Iowa Falls LCC
 US Survey Feet
9/30/18

Point Name: **8029**

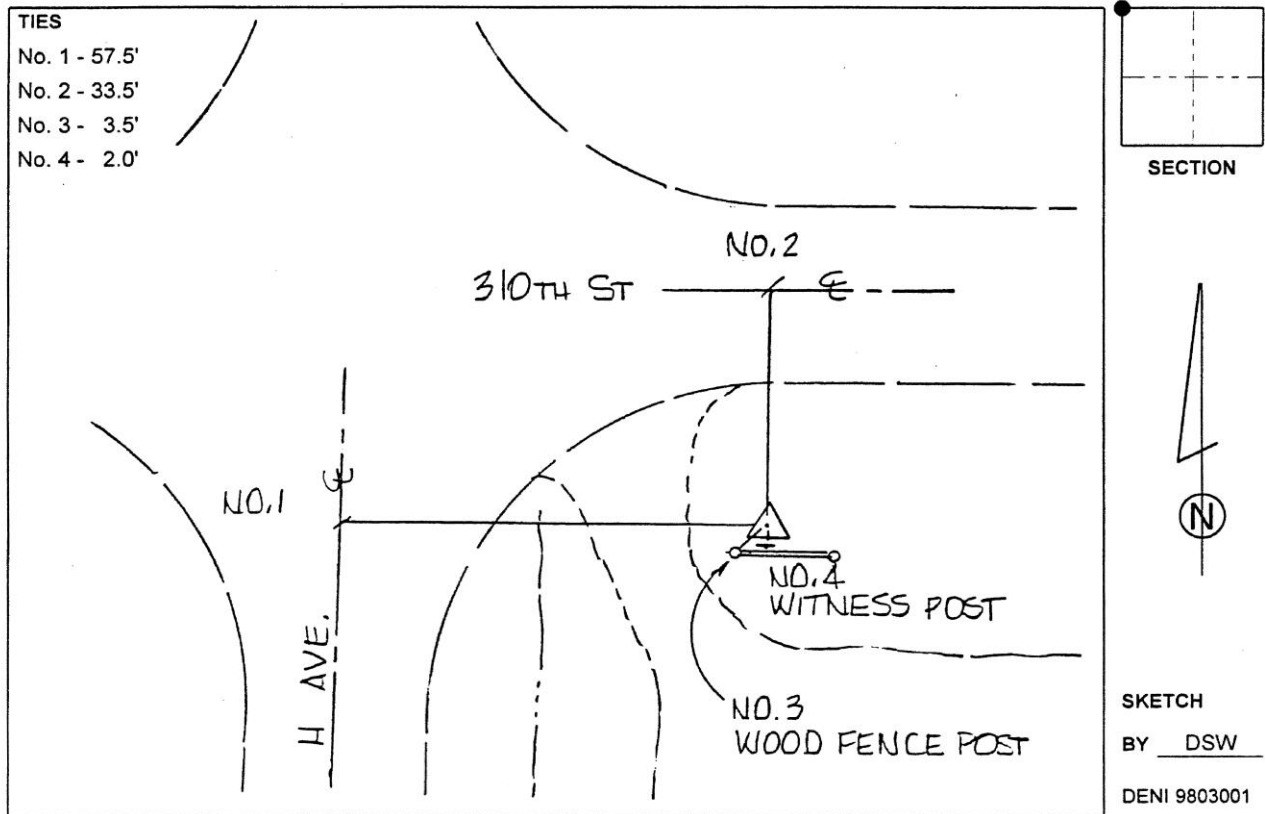
Designation: 862119 4 (Set by Deni Associates in 1998)

NAD 83(NA2011) Latitude: **N42°15'09.02987"** Longitude: **W93°20'47.18167"**
 NAVD 88 Ortho Height: **1103.103sft** Ellip. Ht: **1005.224sft** **Geoid12B**

Iowa North Zone (1401) Northing: **3555101.831sft** Easting: **4962824.148sft**
 Mapping Angle: **0°06'15"** Combination Scale Factor: **0.9999234117**

IaRCS Zone 4 Northing: **8501182.988sft** Easting: **14902567.317sft**
 Mapping Angle: **1°00'19"** Combination Scale Factor: **1.0000088961**

Monument Type: 3-1/4" aluminum disk set in the top of a 12" dia. poured-in-place concrete monument.



This document was prepared by Dan Corbin, Inc. on February 18th, 2019 for Hardin County, Iowa.