

Hardin County, Iowa
 Horizontal Datum: **NAD 83(NA2011)** - Vertical Datum: **NAVD 1988**
 Iowa State Plane North Zone (1401)
 Iowa Regional Coordinate System, Zone 4, Sioux City-Iowa Falls LCC
 US Survey Feet
9/30/18

Point Name: **8031**

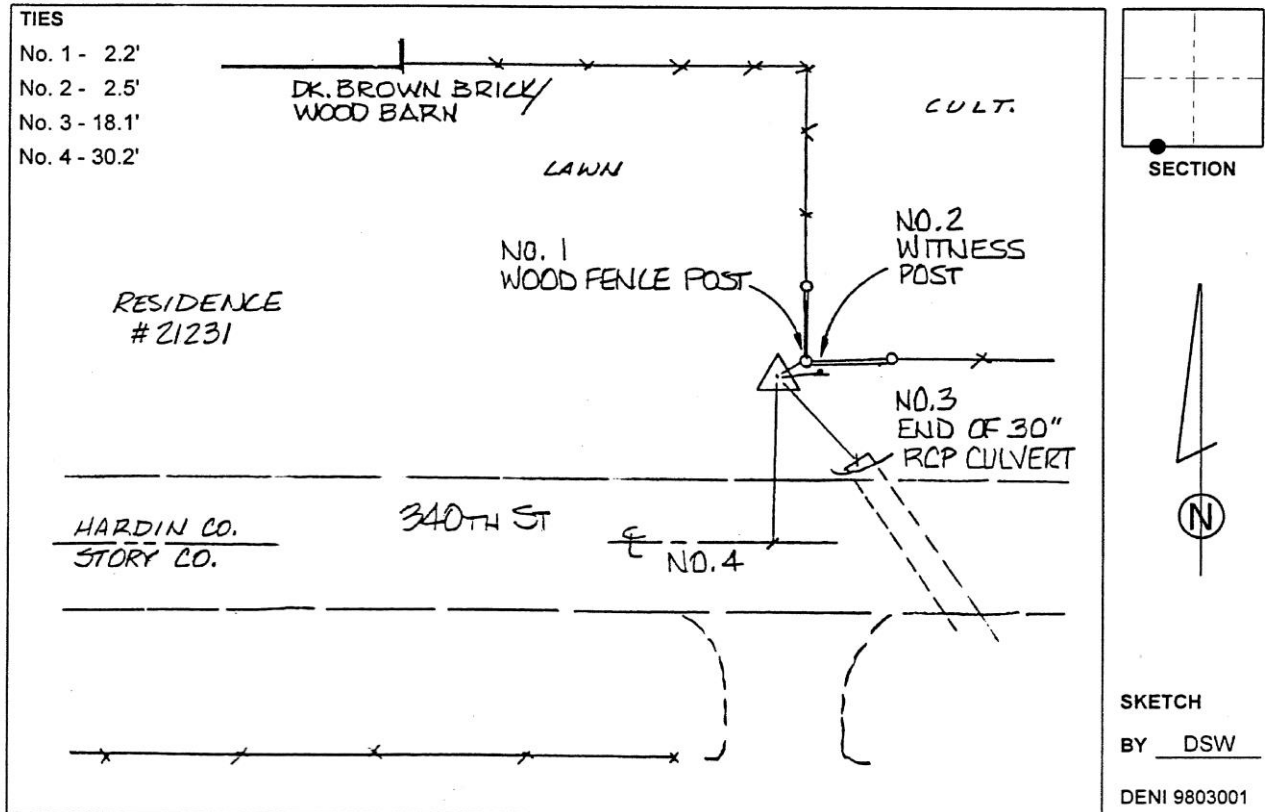
Designation: 862134 3 (Set by Deni Associates in 1998)

NAD 83(NA2011) Latitude: **N42°12'32.96733"** Longitude: **W93°17'07.02783"**
 NAVD 88 Ortho Height: **1080.810sft** Ellip. Ht: **981.078sft** Geoid12B

Iowa North Zone (1401) Northing: **3539340.155sft** Easting: **4979420.690sft**
 Mapping Angle: **0°08'44"** Combination Scale Factor: **0.9999302922**

IaRCS Zone 4 Northing: **8485682.938sft** Easting: **14919411.091sft**
 Mapping Angle: **1°02'47"** Combination Scale Factor: **1.0000140204**

Monument Type: 3-1/4" aluminum disk set in the top of a 12" dia. poured-in-place concrete monument.



This document was prepared by Dan Corbin, Inc. on February 18th, 2019 for Hardin County, Iowa.