

Hardin County, Iowa
 Horizontal Datum: **NAD 83(NA2011)** - Vertical Datum: **NAVD 1988**
 Iowa State Plane North Zone (1401)
 Iowa Regional Coordinate System, Zone 4, Sioux City-Iowa Falls LCC
 US Survey Feet
9/30/18

Point Name: **8033**

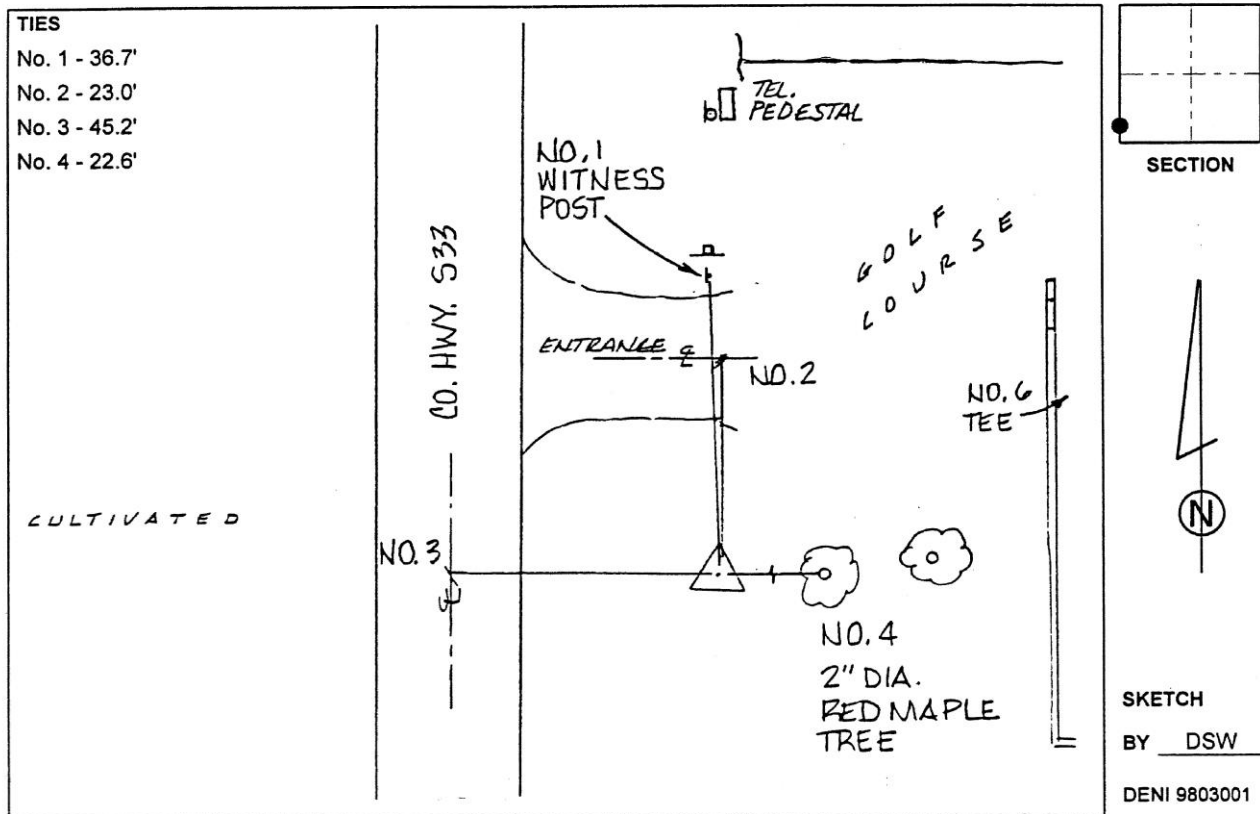
Designation: 872134 3 (Set by Deni Associates in 1998)

NAD 83(NA2011) Latitude: **N42°17'57.71123"** Longitude: **W93°17'24.35610"**
 NAVD 88 Ortho Height: **1110.191sft** Ellip. Ht: **1011.205sft** **Geoid12B**

Iowa North Zone (1401) Northing: **3572209.765sft** Easting: **4978035.018sft**
 Mapping Angle: **0°08'32"** Combination Scale Factor: **0.9999175735**

IaRCS Zone 4 Northing: **8518529.505sft** Easting: **14917508.566sft**
 Mapping Angle: **1°02'36"** Combination Scale Factor: **1.0000049575**

Monument Type: 3-1/4" aluminum disk set in the top of a 12" dia. poured-in-place concrete monument.



This document was prepared by Dan Corbin, Inc. on February 18th, 2019 for Hardin County, Iowa.