

Hardin County, Iowa
 Horizontal Datum: **NAD 83(NA2011)** - Vertical Datum: **NAVD 1988**
 Iowa State Plane North Zone (1401)
 Iowa Regional Coordinate System, Zone 4, Sioux City-Iowa Falls LCC
 US Survey Feet
9/30/18

Point Name: **8034**

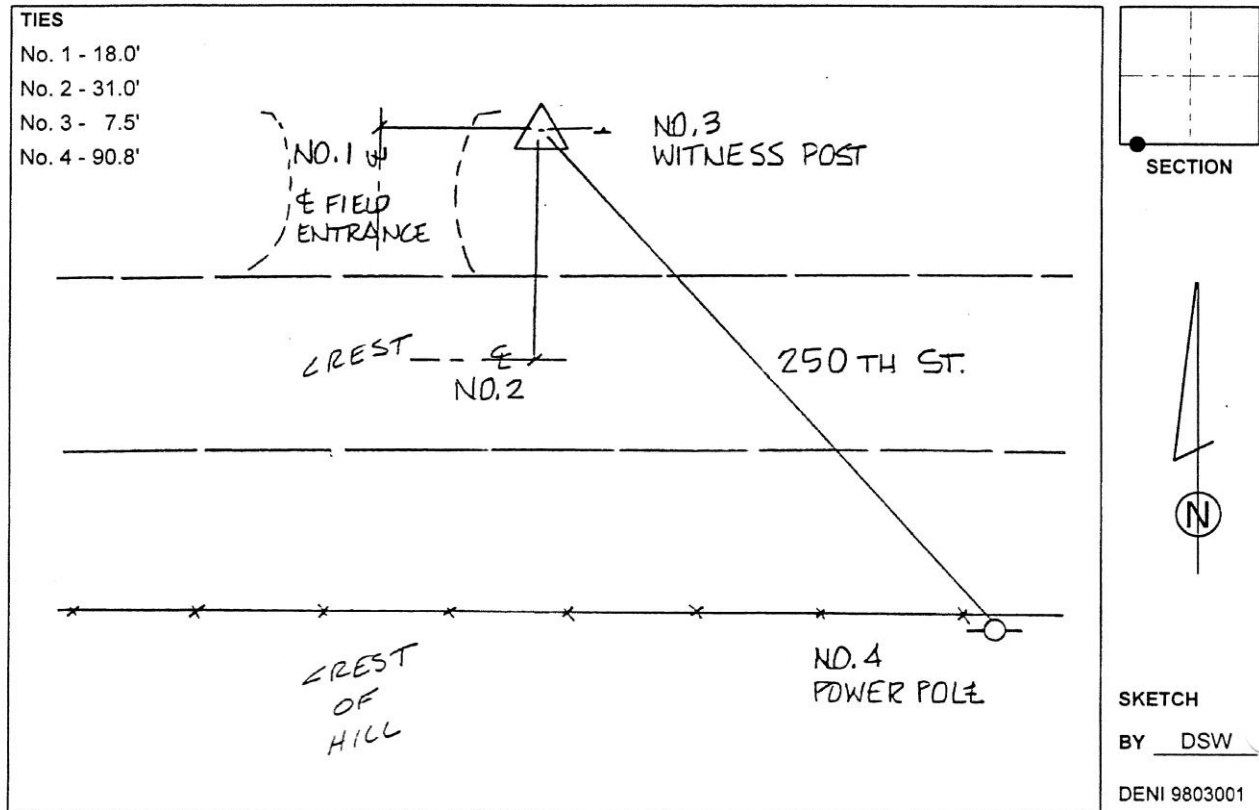
Designation: 872115 3 (Set by Deni Associates in 1998)

NAD 83(NA2011) Latitude: **N42°20'21.42564"** Longitude: **W93°17'12.78484"**
 NAVD 88 Ortho Height: **1128.270sft** Ellip. Ht: **1029.519sft** **Geoid12B**

Iowa North Zone (1401) Northing: **3586759.787sft** Easting: **4978867.898sft**
 Mapping Angle: **0°08'40"** Combination Scale Factor: **0.9999124902**

IaRCS Zone 4 Northing: **8533092.110sft** Easting: **14918112.602sft**
 Mapping Angle: **1°02'44"** Combination Scale Factor: **1.0000014938**

Monument Type: 3-1/4" aluminum disk set in the top of a 12" dia. poured-in-place concrete monument.



This document was prepared by Dan Corbin, Inc. on February 18th, 2019 for Hardin County, Iowa.