

**Hardin County, Iowa**  
 Horizontal Datum: **NAD 83(NA2011)** - Vertical Datum: **NAVD 1988**  
 Iowa State Plane North Zone (1401)  
 Iowa Regional Coordinate System, Zone 4, Sioux City-Iowa Falls LCC  
 US Survey Feet  
**9/30/18**

Point Name: **8035**

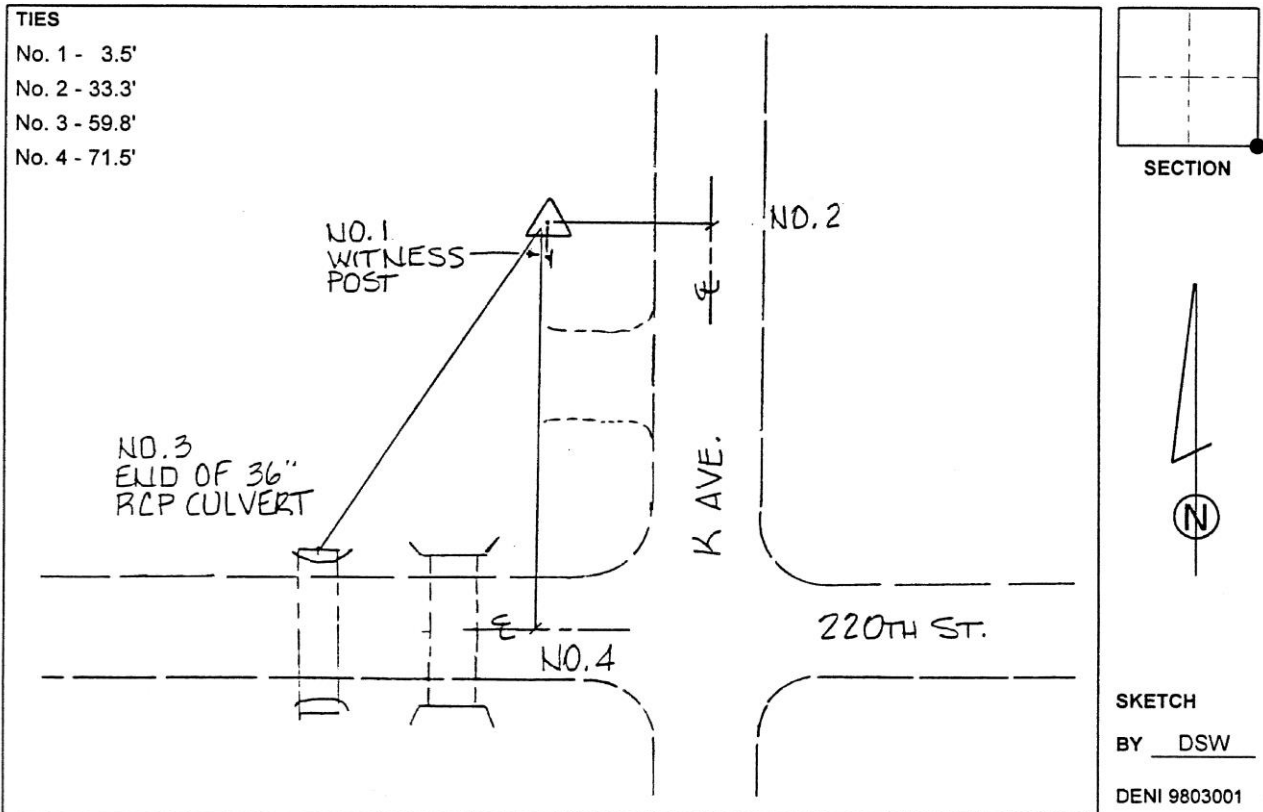
**Designation:** 882133 2 (Set by Deni Associates in 1998)

NAD 83(NA2011) Latitude: **N42°23'00.05912"** Longitude: **W93°17'25.77804"**  
 NAVD 88 Ortho Height: **1117.530sft** Ellip. Ht: **1019.251sft** **Geoid12B**

**Iowa North Zone (1401)** Northing: **3602815.469sft** Easting: **4977852.314sft**  
 Mapping Angle: **0°08'31"** Combination Scale Factor: **0.9999088949**

**IaRCS Zone 4** Northing: **8549131.279sft** Easting: **14916844.559sft**  
 Mapping Angle: **1°02'35"** Combination Scale Factor: **0.9999996876**

**Monument Type:** 3-1/4" aluminum disk set in the top of a 12" dia. poured-in-place concrete monument.



*This document was prepared by Dan Corbin, Inc. on February 18<sup>th</sup>, 2019 for Hardin County, Iowa.*