

**Hardin County, Iowa**  
 Horizontal Datum: **NAD 83(NA2011)** - Vertical Datum: **NAVD 1988**  
 Iowa State Plane North Zone (1401)  
 Iowa Regional Coordinate System, Zone 4, Sioux City-Iowa Falls LCC  
 US Survey Feet

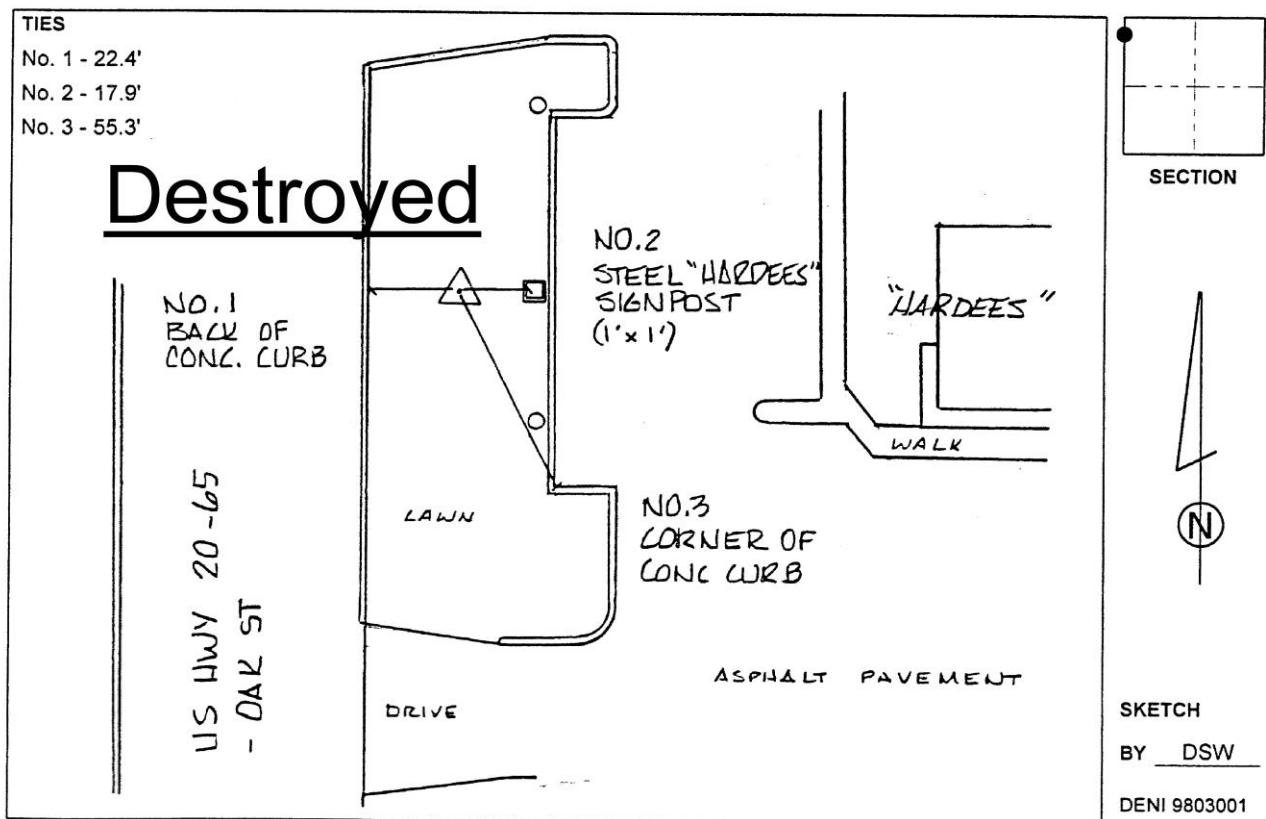
Point Name: **8038 (Destroyed)**

**Designation:** 892019 4 (Set by Deni Associates in 1998)

NAD 83(1996)      Latitude: ~~N 42 30 47.14708~~      Longitude: ~~W 93 15 44.16849~~  
 NAVD 88 Ortho Height: ~~1098.850~~sft      Ellip. Ht: ~~1001.211~~sft

**Iowa North Zone (1401)**    Northing: ~~3650118.290~~sft      Easting: ~~4985344.850~~sft  
 Mapping Angle: ~~0 09 40.04~~      Combination Scale Factor: ~~0.9999489900~~

**Monument Type:** 3-1/4" aluminum disk set in the top of a 12" dia. poured-in-place concrete monument.



*This document was prepared by Dan Corbin, Inc. on February 18<sup>th</sup>, 2019 for Hardin County, Iowa.*