

Hardin County, Iowa
 Horizontal Datum: **NAD 83(NA2011)** - Vertical Datum: **NAVD 1988**
 Iowa State Plane North Zone (1401)
 Iowa Regional Coordinate System, Zone 4, Sioux City-Iowa Falls LCC
 US Survey Feet
9/30/18

Point Name: **8039**

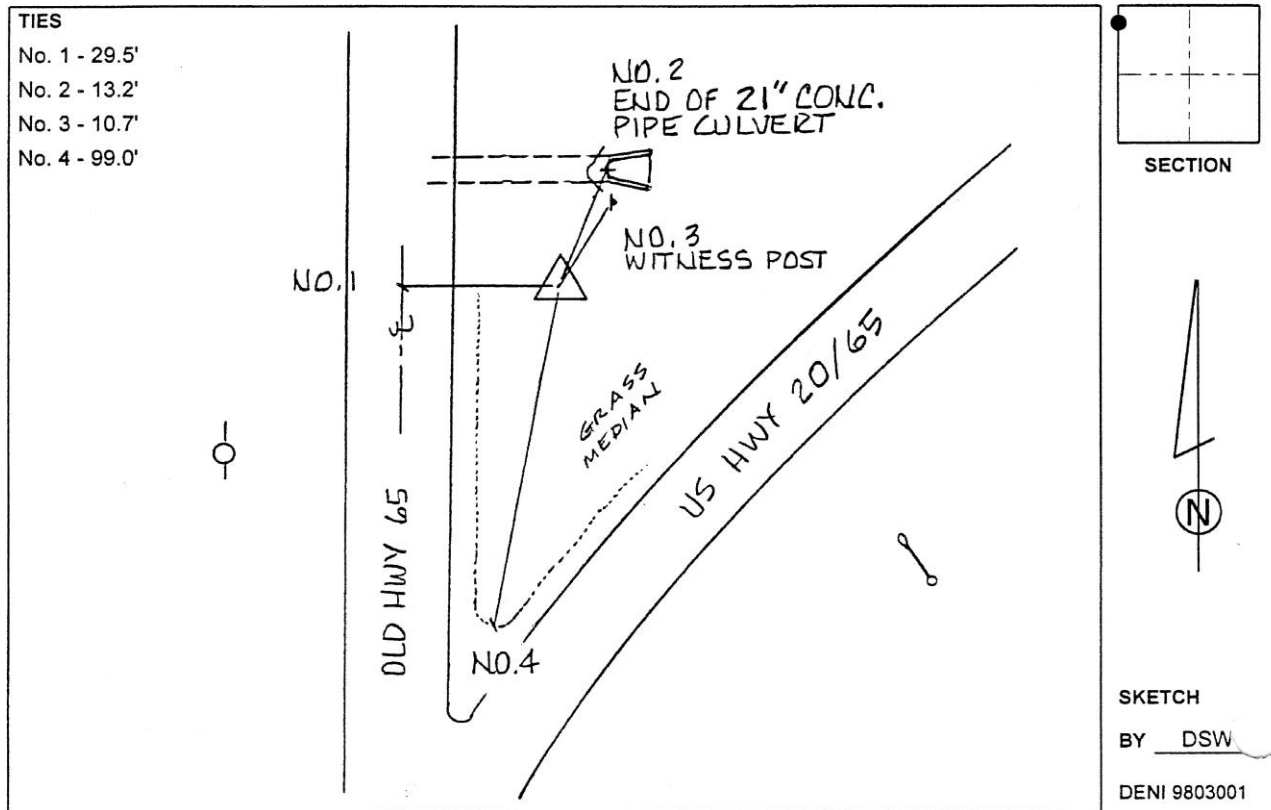
Designation: 892006 4 (Set by Deni Associates in 1998)

NAD 83(NA2011) Latitude: **N42°33'20.43905"** Longitude: **W93°15'43.32061"**
 NAVD 88 Ortho Height: **1153.660sft** Ellip. Ht: **1056.310sft** Geoid**12B**

Iowa North Zone (1401) Northing: **3665636.158sft** Easting: **4985364.672sft**
 Mapping Angle: **0°09'41"** Combination Scale Factor: **0.9998967803**

IaRCS Zone 4 Northing: **8612068.262sft** Easting: **14923368.793sft**
 Mapping Angle: **1°03'44"** Combination Scale Factor: **0.9999945820**

Monument Type: 3-1/4" aluminum disk set in the top of a 12" dia. poured-in-place concrete monument.



This document was prepared by Dan Corbin, Inc. on February 18th, 2019 for Hardin County, Iowa.