

**Hardin County, Iowa**  
 Horizontal Datum: **NAD 83(NA2011)** - Vertical Datum: **NAVD 1988**  
 Iowa State Plane North Zone (1401)  
 Iowa Regional Coordinate System, Zone 4, Sioux City-Iowa Falls LCC  
 US Survey Feet  
**9/30/18**

Point Name: **8040**

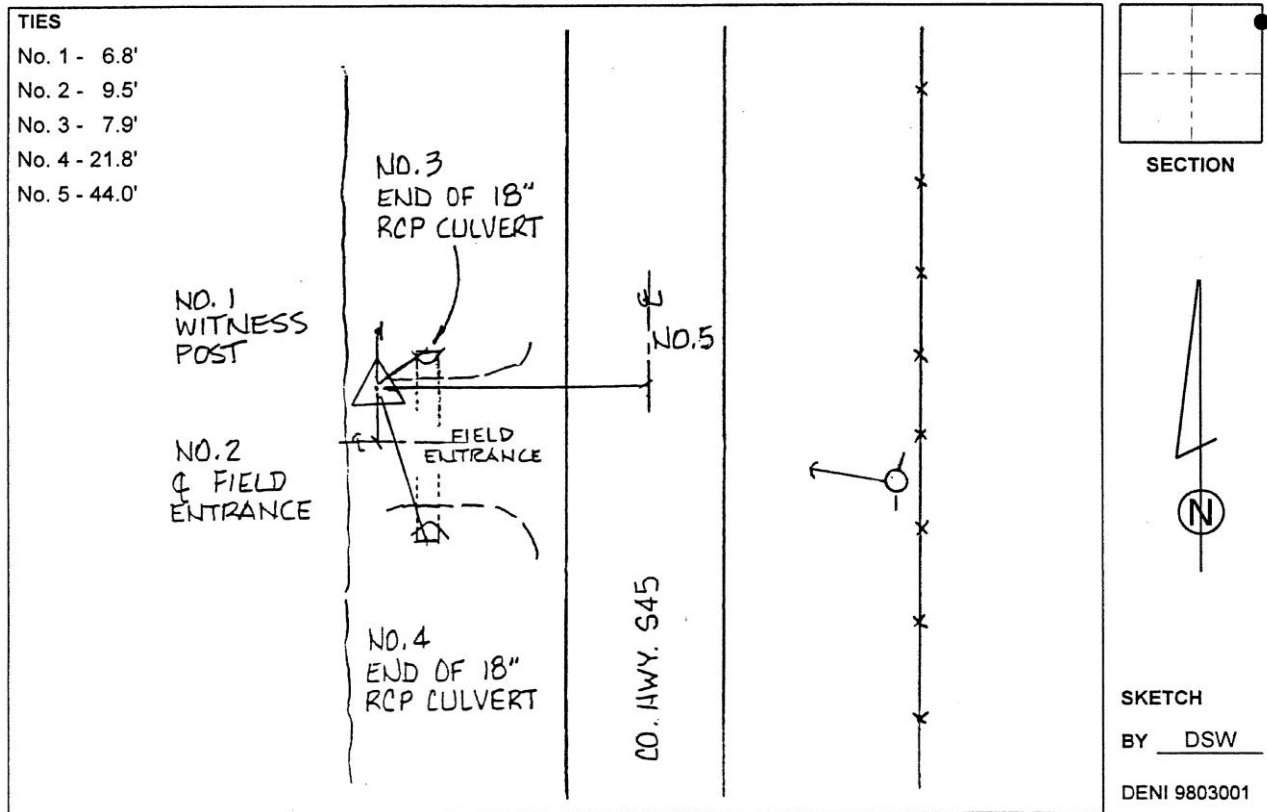
**Designation:** 892004 1 (Set by Deni Associates in 1998)

NAD 83(NA2011) Latitude: **N42°33'19.96039"** Longitude: **W93°12'12.95894"**  
 NAVD 88 Ortho Height: **1155.680sft** Ellip. Ht: **1056.508sft** Geoid12B

**Iowa North Zone (1401)** Northing: **3665637.461sft** Easting: **5001108.444sft**  
 Mapping Angle: **0°12'03"** Combination Scale Factor: **0.9998967754**

**IaRCS Zone 4** Northing: **8612317.128sft** Easting: **14939112.138sft**  
 Mapping Angle: **1°06'06"** Combination Scale Factor: **0.9999945717**

**Monument Type:** 3-1/4" aluminum disk set in the top of a 12" dia. poured-in-place concrete monument.



*This document was prepared by Dan Corbin, Inc. on February 18<sup>th</sup>, 2019 for Hardin County, Iowa.*