

Hardin County, Iowa
 Horizontal Datum: **NAD 83(NA2011)** - Vertical Datum: **NAVD 1988**
 Iowa State Plane North Zone (1401)
 Iowa Regional Coordinate System, Zone 4, Sioux City-Iowa Falls LCC
 US Survey Feet
9/30/18

Point Name: **8041**

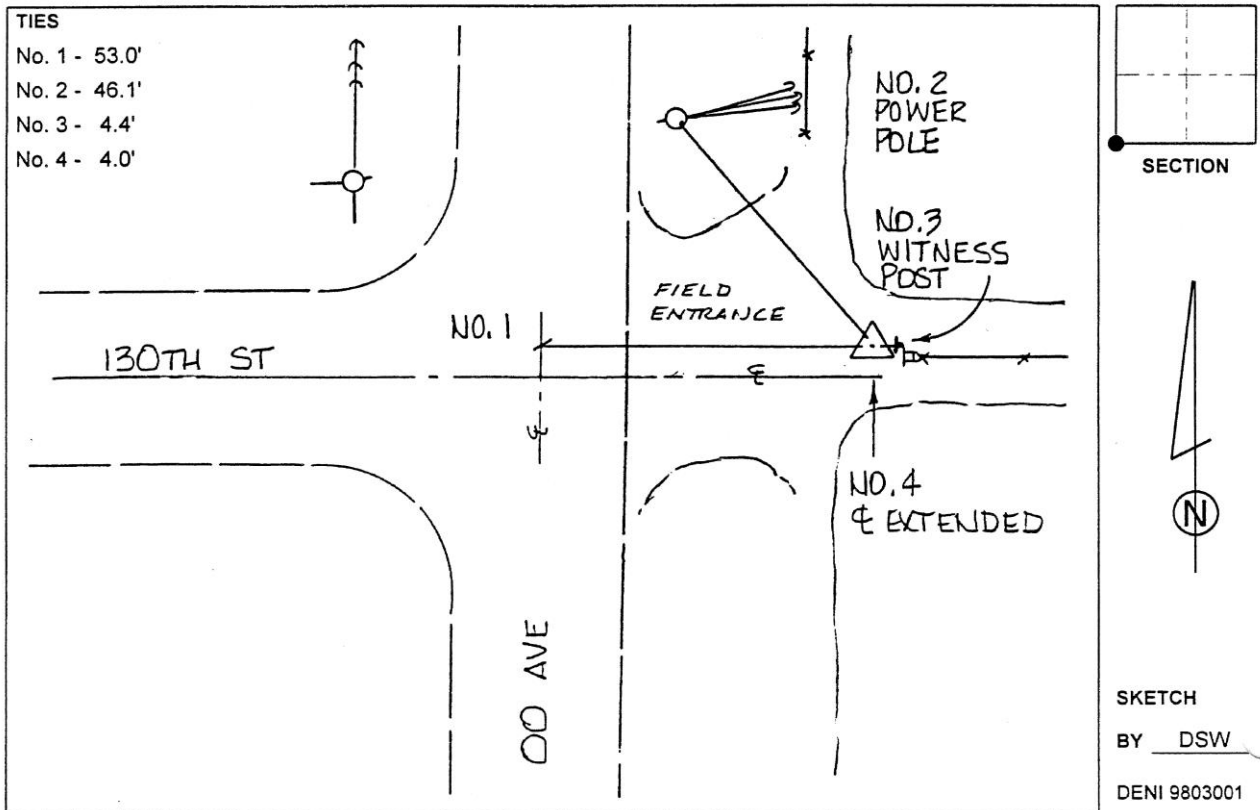
Designation: 892015 3 (Set by Deni Associates in 1998)

NAD 83(NA2011) Latitude: **N42°30'52.95173"** Longitude: **W93°12'14.93320"**
 NAVD 88 Ortho Height: **1115.480sft** Ellip. Ht: **1015.836sft** Geoid**12B**

Iowa North Zone (1401) Northing: **3650755.343sft** Easting: **5001012.769sft**
 Mapping Angle: **0°12'02"** Combination Scale Factor: **0.9999003596**

IaRCS Zone 4 Northing: **8597433.902sft** Easting: **14939250.466sft**
 Mapping Angle: **1°06'05"** Combination Scale Factor: **0.9999964933**

Monument Type: 3-1/4" aluminum disk set in the top of a 12" dia. poured-in-place concrete monument.



This document was prepared by Dan Corbin, Inc. on February 18th, 2019 for Hardin County, Iowa.