

Hardin County, Iowa
 Horizontal Datum: **NAD 83(NA2011)** - Vertical Datum: **NAVD 1988**
 Iowa State Plane North Zone (1401)
 Iowa Regional Coordinate System, Zone 4, Sioux City-Iowa Falls LCC
 US Survey Feet
9/30/18

Point Name: **8043**

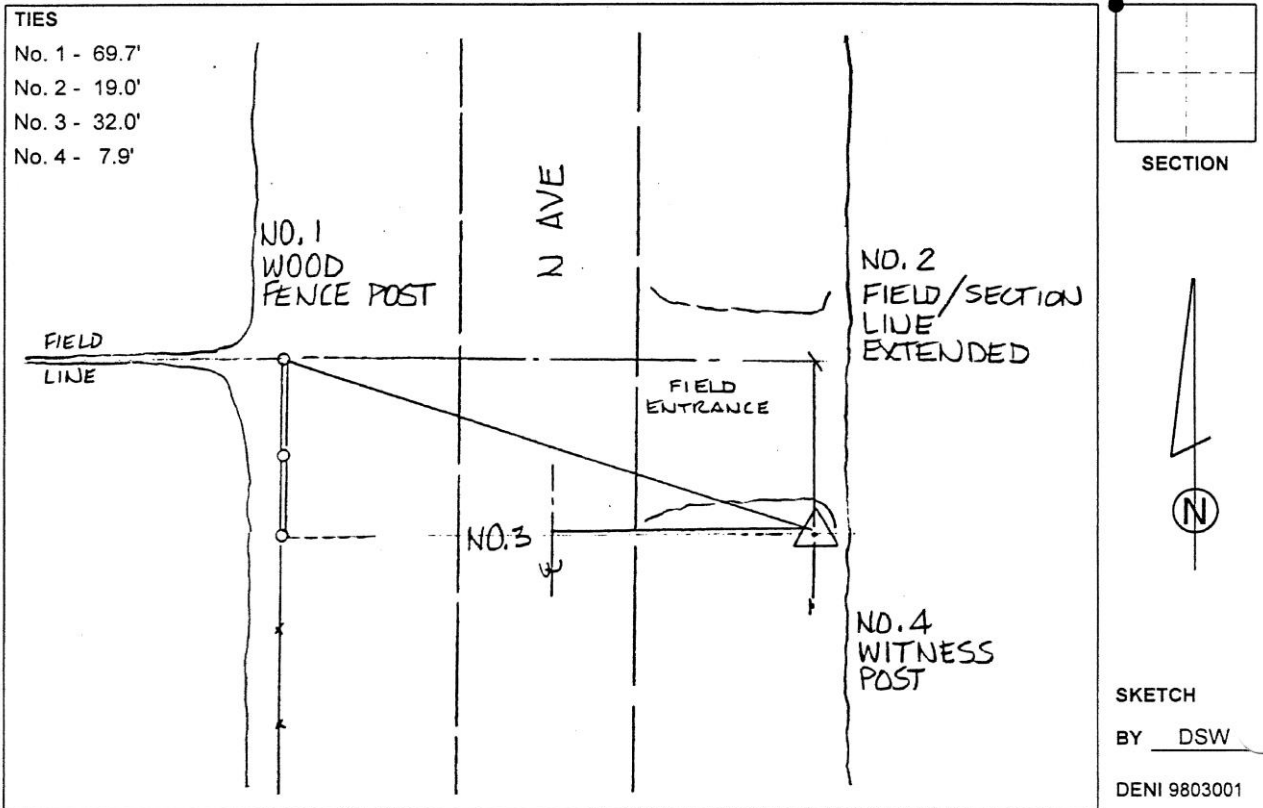
Designation: 882019 4 (Set by Deni Associates in 1998)

NAD 83(NA2011) Latitude: **N42°25'34.35159"** Longitude: **W93°13'54.51182"**
 NAVD 88 Ortho Height: **1142.591sft** Ellip. Ht: **1042.994sft** Geoid12B

Iowa North Zone (1401) Northing: **3618478.983sft** Easting: **4993657.675sft**
 Mapping Angle: **0°10'54"** Combination Scale Factor: **0.9999043485**

IaRCS Zone 4 Northing: **8565042.835sft** Easting: **14932403.102sft**
 Mapping Angle: **1°04'58"** Combination Scale Factor: **0.9999968824**

Monument Type: 3-1/4" aluminum disk set in the top of a 12" dia. poured-in-place concrete monument.



This document was prepared by Dan Corbin, Inc. on February 18th, 2019 for Hardin County, Iowa.