

**Hardin County, Iowa**  
 Horizontal Datum: **NAD 83(NA2011)** - Vertical Datum: **NAVD 1988**  
 Iowa State Plane North Zone (1401)  
 Iowa Regional Coordinate System, Zone 4, Sioux City-Iowa Falls LCC  
 US Survey Feet

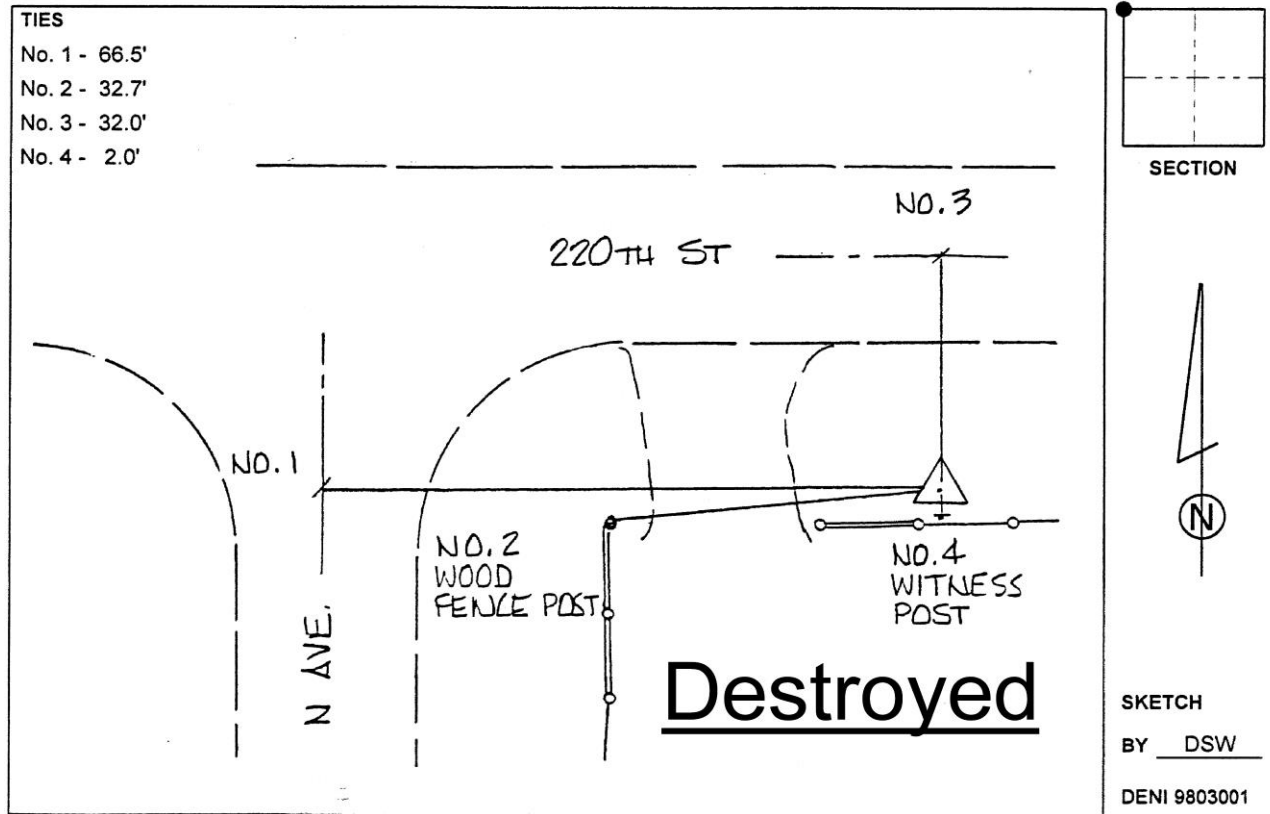
Point Name: **8044 (Destroyed)**

**Designation:** 872006 4 (Set by Deni Associates in 1998)

NAD 83(1996) Latitude: ~~N 42 22 58.25818~~ Longitude: ~~W 93 13 54.09618~~  
 NAVD 88 Ortho Height: ~~1115.790~~sft Ellip. Ht: ~~1016.107~~sft

**Iowa North Zone (1401)** Northing: ~~3602678.060~~sft Easting: ~~4993739.000~~sft  
 Mapping Angle: ~~0 10 54.64~~ Combination Scale Factor: ~~0.9999576600~~

**Monument Type:** 3-1/4" aluminum disk set in the top of a 12" dia. poured-in-place concrete monument.



*This document was prepared by Dan Corbin, Inc. on February 18<sup>th</sup>, 2019 for Hardin County, Iowa.*