

Hardin County, Iowa
Horizontal Datum: **NAD 83(NA2011)** - Vertical Datum: **NAVD 1988**
Iowa State Plane North Zone (1401)
Iowa Regional Coordinate System, Zone 4, Sioux City-Iowa Falls LCC
US Survey Feet
9/30/18

Point Name: **8045**

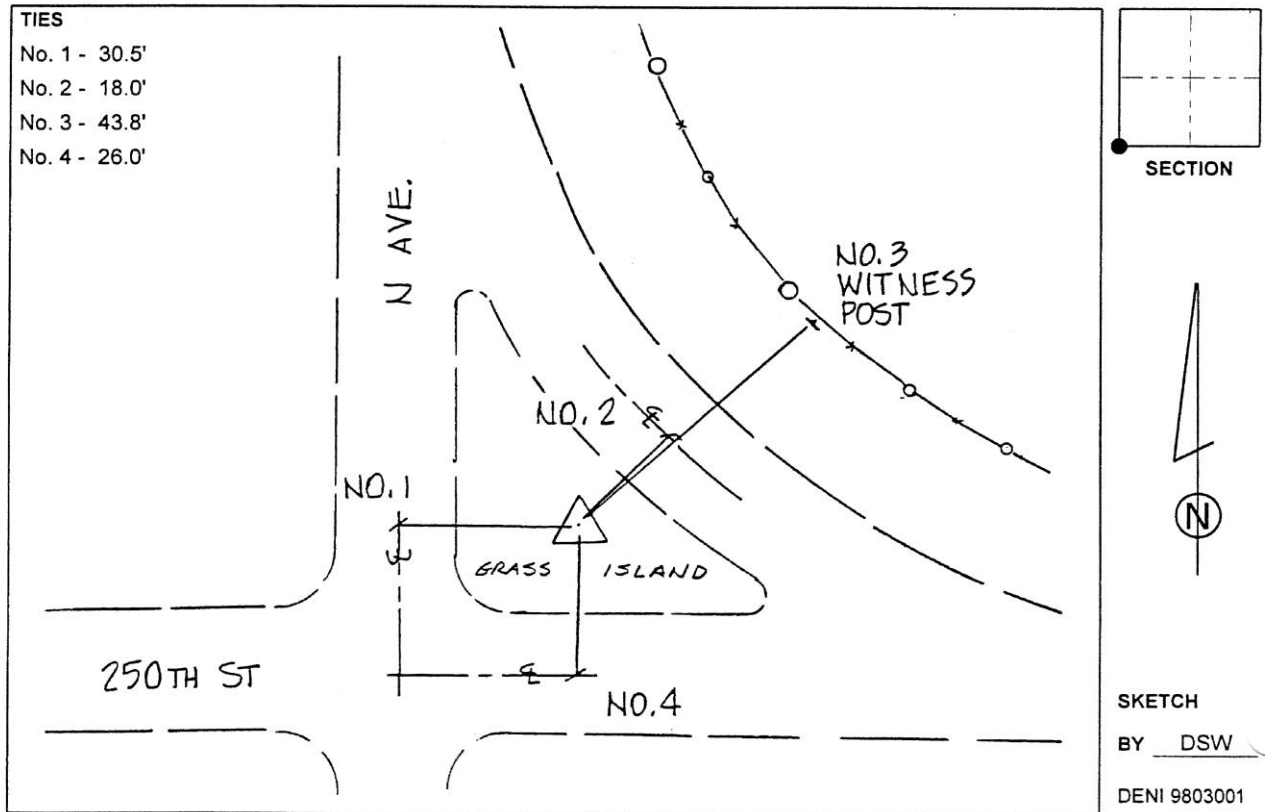
Designation: 872018 3 (Set by Deni Associates in 1998)

NAD 83(NA2011) Latitude: **N42°20'20.58703"** Longitude: **W93°13'54.44499"**
NAVD 88 Ortho Height: **1082.730sft** Ellip. Ht: **982.541sft** **Geoid12B**

Iowa North Zone (1401) Northing: **3586717.300sft** Easting: **4993763.455sft**
Mapping Angle: **0°10'54"** Combination Scale Factor: **0.9999147588**

IaRCS Zone 4 Northing: **8533283.859sft** Easting: **14933008.311sft**
Mapping Angle: **1°04'58"** Combination Scale Factor: **1.0000037532**

Monument Type: 3-1/4" aluminum disk set in the top of a 12" dia. poured-in-place concrete monument.



This document was prepared by Dan Corbin, Inc. on February 18th, 2019 for Hardin County, Iowa.