

Hardin County, Iowa
 Horizontal Datum: **NAD 83(NA2011)** - Vertical Datum: **NAVD 1988**
 Iowa State Plane North Zone (1401)
 Iowa Regional Coordinate System, Zone 4, Sioux City-Iowa Falls LCC
 US Survey Feet
9/30/18

Point Name: **8049**

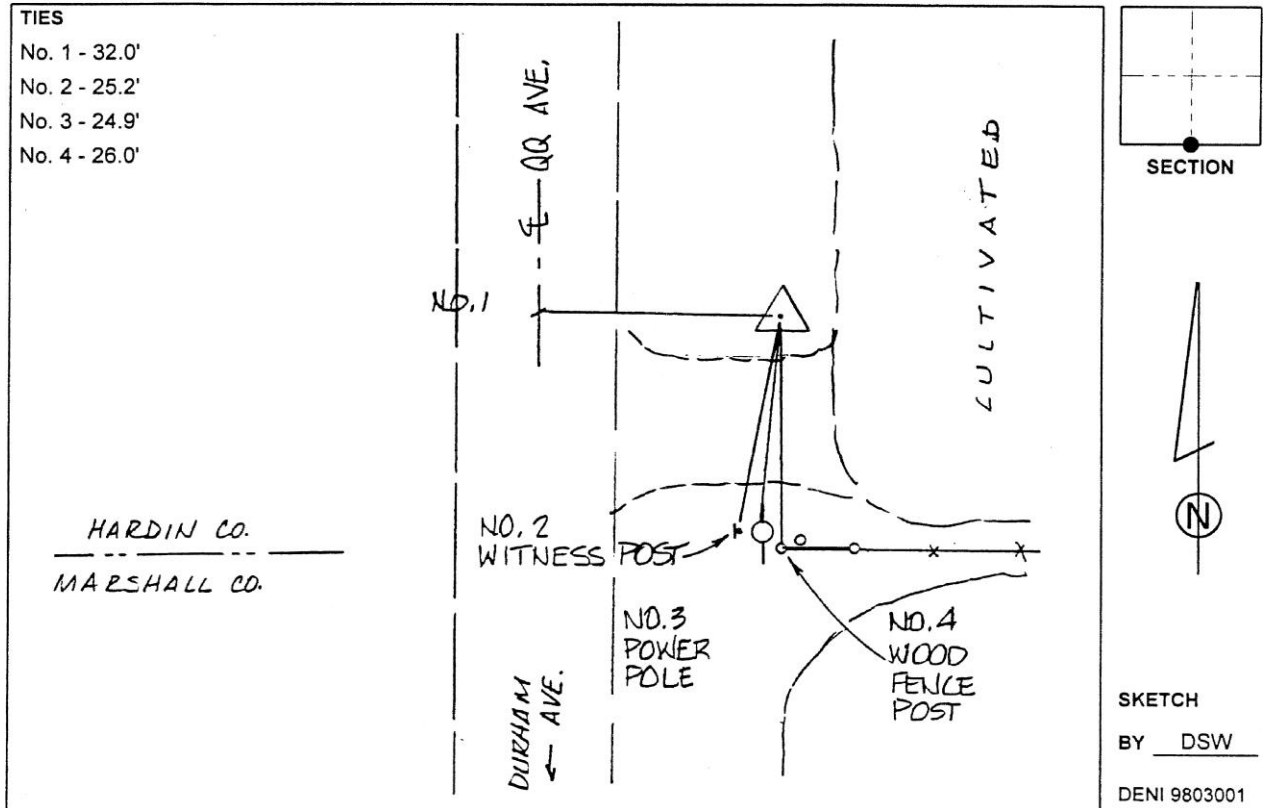
Designation: 862034 2 (Set by Deni Associates in 1998)

NAD 83(NA2011) Latitude: **N42°12'31.98021"** Longitude: **W93°09'59.20524"**
 NAVD 88 Ortho Height: **1026.439sft** Ellip. Ht: **924.517sft** **Geoid12B**

Iowa North Zone (1401) Northing: **3539344.635sft** Easting: **5011617.106sft**
 Mapping Angle: **0°13'34"** Combination Scale Factor: **0.9999330338**

IaRCS Zone 4 Northing: **8486193.677sft** Easting: **14951606.153sft**
 Mapping Angle: **1°07'37"** Combination Scale Factor: **1.0000167512**

Monument Type: 3-1/4" aluminum disk set in the top of a 12" dia. poured-in-place concrete monument.



This document was prepared by Dan Corbin, Inc. on February 18th, 2019 for Hardin County, Iowa.