

Hardin County, Iowa
 Horizontal Datum: **NAD 83(NA2011)** - Vertical Datum: **NAVD 1988**
 Iowa State Plane North Zone (1401)
 Iowa Regional Coordinate System, Zone 4, Sioux City-Iowa Falls LCC
 US Survey Feet
9/30/18

Point Name: **8050**

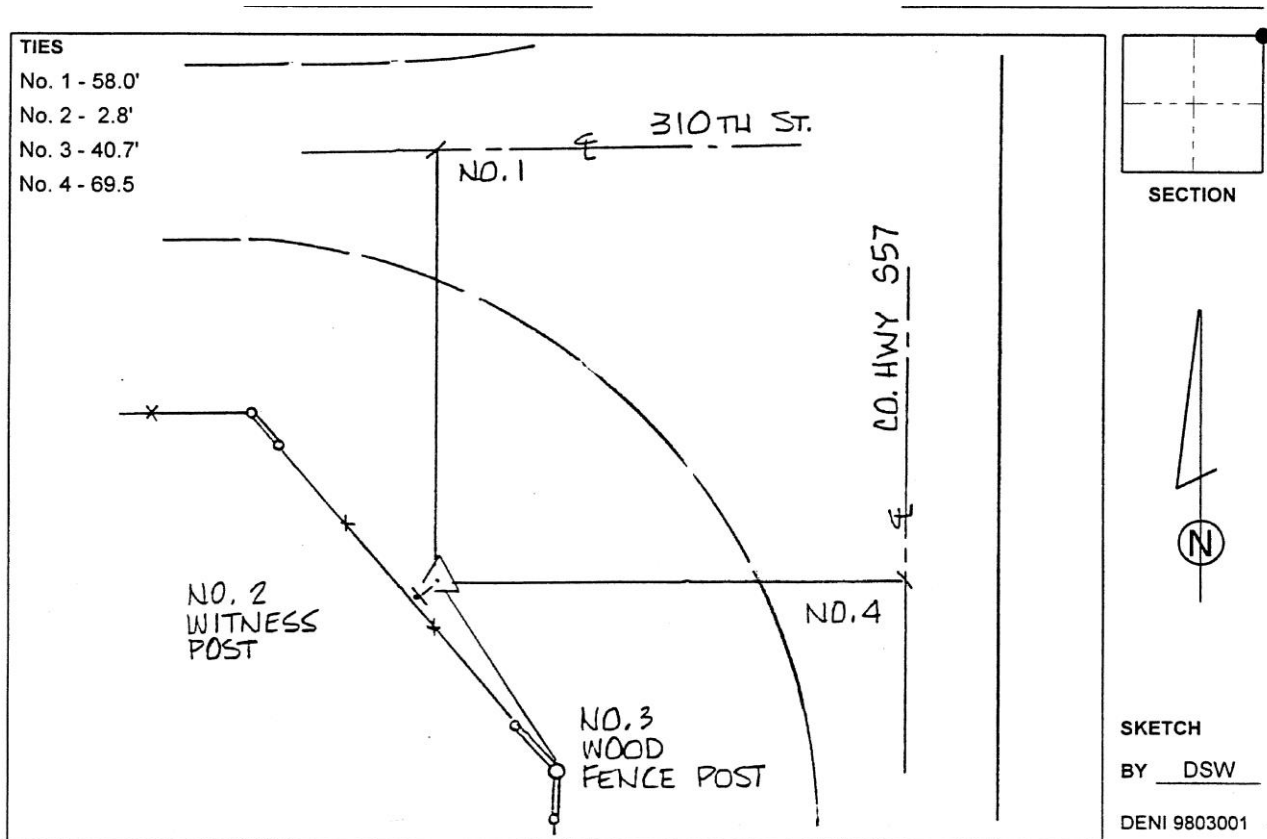
Designation: 862021 1 (Set by Deni Associates in 1998)

NAD 83(NA2011) Latitude: **N42°15'08.17844"** Longitude: **W93°10'36.00041"**
 NAVD 88 Ortho Height: **1046.280sft** Ellip. Ht: **944.604sft** Geoid12B

Iowa North Zone (1401) Northing: **3555145.285sft** Easting: **5008787.586sft**
 Mapping Angle: **0°13'09"** Combination Scale Factor: **0.9999263389**

IaRCS Zone 4 Northing: **8501949.225sft** Easting: **14948528.318sft**
 Mapping Angle: **1°07'12"** Combination Scale Factor: **1.0000118139**

Monument Type: 3-1/4" aluminum disk set in the top of a 12" dia. poured-in-place concrete monument.



This document was prepared by Dan Corbin, Inc. on February 18th, 2019 for Hardin County, Iowa.