

Hardin County, Iowa
 Horizontal Datum: **NAD 83(NA2011)** - Vertical Datum: **NAVD 1988**
 Iowa State Plane North Zone (1401)
 Iowa Regional Coordinate System, Zone 4, Sioux City-Iowa Falls LCC
 US Survey Feet
9/30/18

Point Name: **8051**

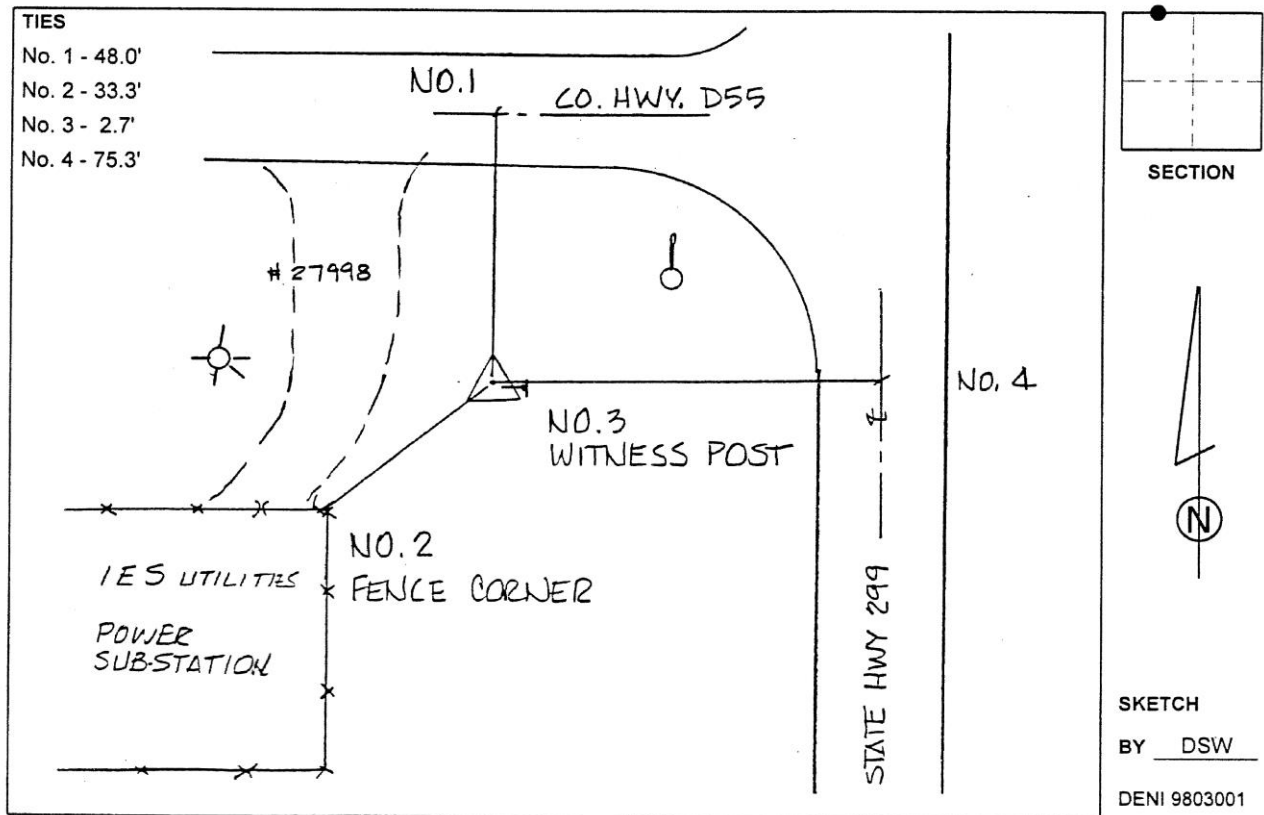
Designation: 862003 4 (Set by Deni Associates in 1998)

NAD 83(NA2011) Latitude: **N42°17'44.04344"** Longitude: **W93°10'18.90953"**
 NAVD 88 Ortho Height: **1090.600sft** Ellip. Ht: **988.938sft** **Geoid12B**

Iowa North Zone (1401) Northing: **3570927.945sft** Easting: **5010011.654sft**
 Mapping Angle: **0°13'20"** Combination Scale Factor: **0.9999190631**

IaRCS Zone 4 Northing: **8517750.542sft** Easting: **14949504.196sft**
 Mapping Angle: **1°07'23"** Combination Scale Factor: **1.0000062932**

Monument Type: 3-1/4" aluminum disk set in the top of a 12" dia. poured-in-place concrete monument.



This document was prepared by Dan Corbin, Inc. on February 18th, 2019 for Hardin County, Iowa.