

Hardin County, Iowa
 Horizontal Datum: **NAD 83(NA2011)** - Vertical Datum: **NAVD 1988**
 Iowa State Plane North Zone (1401)
 Iowa Regional Coordinate System, Zone 4, Sioux City-Iowa Falls LCC
 US Survey Feet
9/30/18

Point Name: **8052**

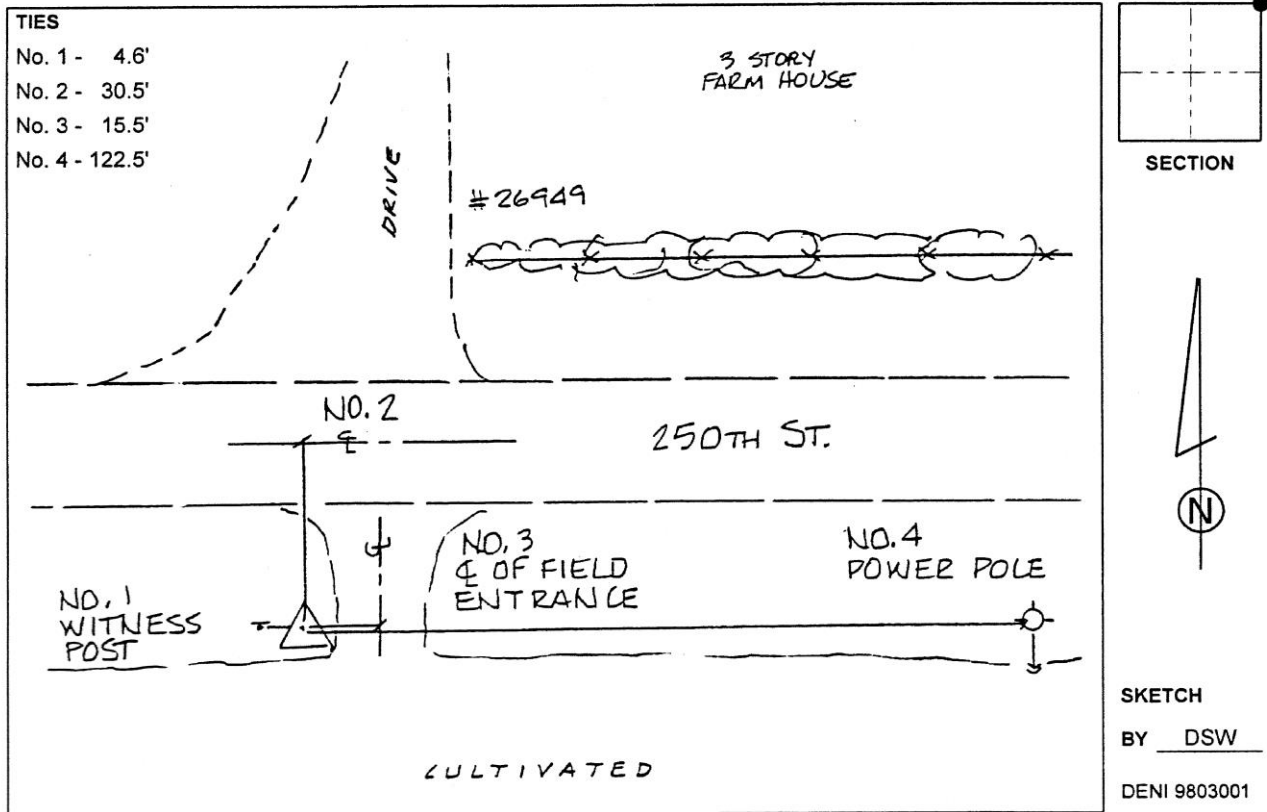
Designation: 872021 1 (Set by Deni Associates in 1998)

NAD 83(NA2011) Latitude: **N42°20'20.57120"** Longitude: **W93°10'39.68030"**
 NAVD 88 Ortho Height: **1058.600sft** Ellip. Ht: **957.176sft** Geoid12B

Iowa North Zone (1401) Northing: **3586766.784sft** Easting: **5008390.280sft**
 Mapping Angle: **0°13'06"** Combination Scale Factor: **0.9999159716**

IaRCS Zone 4 Northing: **8533563.328sft** Easting: **14947633.852sft**
 Mapping Angle: **1°07'09"** Combination Scale Factor: **1.0000049659**

Monument Type: 3-1/4" aluminum disk set in the top of a 12" dia. poured-in-place concrete monument.



This document was prepared by Dan Corbin, Inc. on February 18th, 2019 for Hardin County, Iowa.