

**Hardin County, Iowa**  
 Horizontal Datum: **NAD 83(NA2011)** - Vertical Datum: **NAVD 1988**  
 Iowa State Plane North Zone (1401)  
 Iowa Regional Coordinate System, Zone 4, Sioux City-Iowa Falls LCC  
 US Survey Feet  
**9/30/18**

Point Name: **8055**

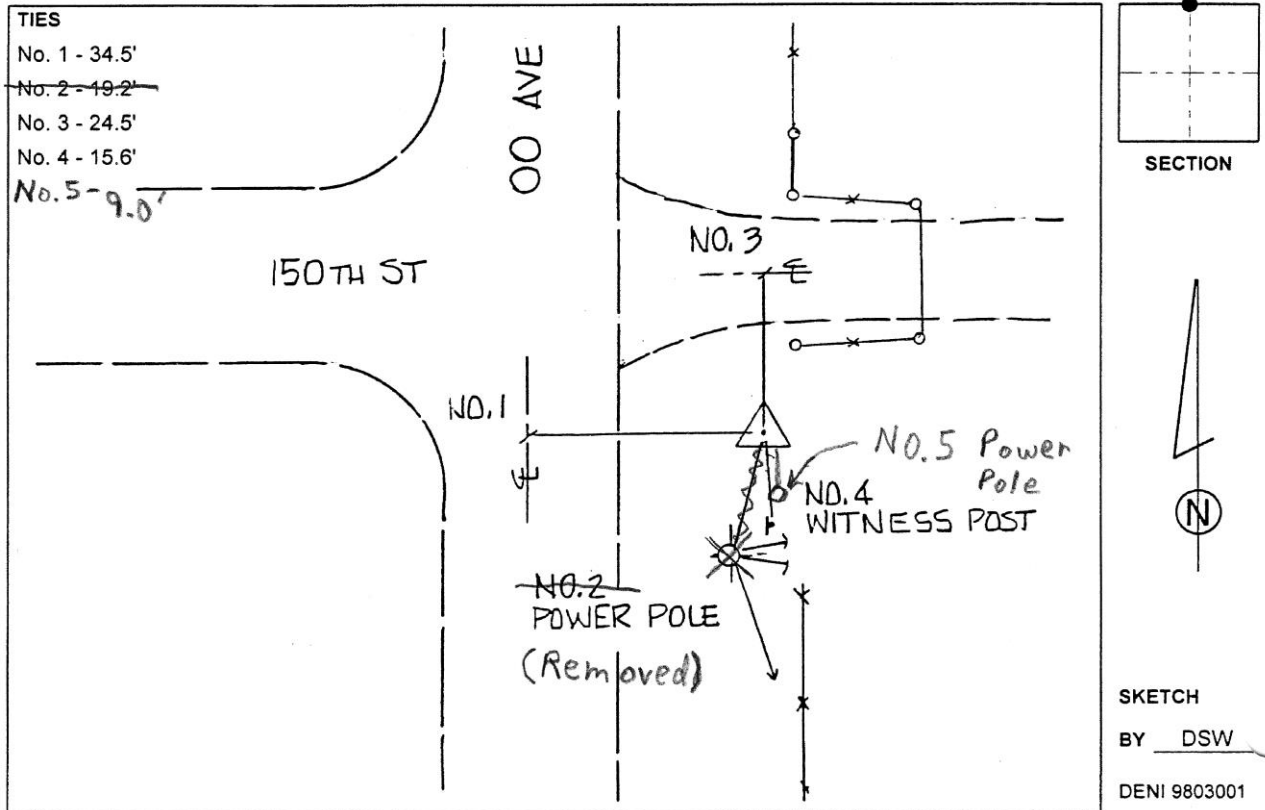
**Designation:** 882004 4 (Set by Deni Associates in 1998)

NAD 83(NA2011) Latitude: **N42°28'15.43068"** Longitude: **W93°11'15.63982"**  
 NAVD 88 Ortho Height: **1039.590sft** Ellip. Ht: **939.108sft** Geoid**12B**

**Iowa North Zone (1401)** Northing: **3634825.650sft** Easting: **5005512.136sft**  
 Mapping Angle: **0°12'42"** Combination Scale Factor: **0.9999063447**

**IaRCS Zone 4** Northing: **8581575.406sft** Easting: **14944000.174sft**  
 Mapping Angle: **1°06'45"** Combination Scale Factor: **1.0000006983**

**Monument Type:** 3-1/4" aluminum disk set in the top of a 12" dia. poured-in-place concrete monument.



*This document was prepared by Dan Corbin, Inc. on February 18<sup>th</sup>, 2019 for Hardin County, Iowa.*