

Hardin County, Iowa
 Horizontal Datum: **NAD 83(NA2011)** - Vertical Datum: **NAVD 1988**
 Iowa State Plane North Zone (1401)
 Iowa Regional Coordinate System, Zone 4, Sioux City-Iowa Falls LCC
 US Survey Feet
9/30/18

Point Name: **8056**

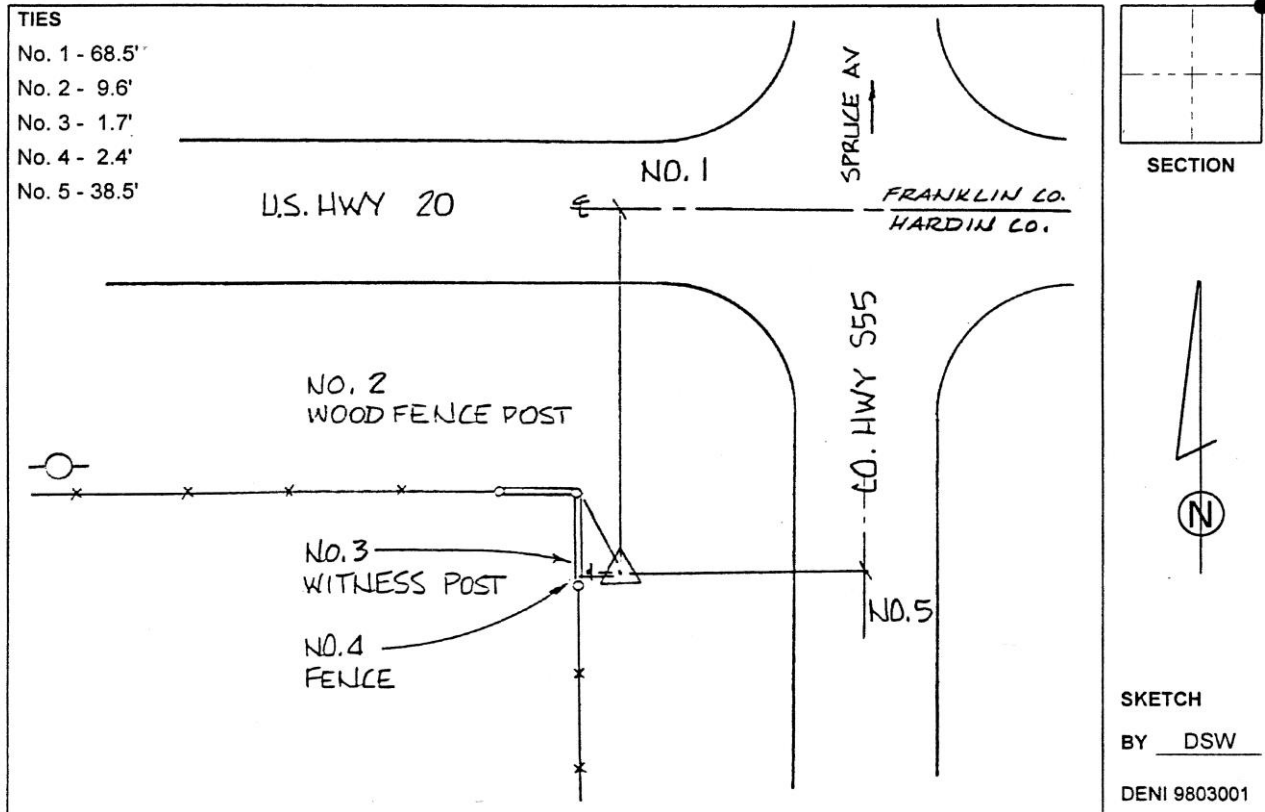
Designation: 892001 1 (Set by Deni Associates in 1998)

NAD 83(NA2011) Latitude: **N42°33'23.56340"** Longitude: **W93°08'41.18165"**
 NAVD 88 Ortho Height: **1145.800sft** Ellip. Ht: **1045.066sft** Geoid**12B**

Iowa North Zone (1401) Northing: **3666063.276sft** Easting: **5016956.455sft**
 Mapping Angle: **0°14'27"** Combination Scale Factor: **0.9998972884**

IaRCS Zone 4 Northing: **8612992.107sft** Easting: **14954953.046sft**
 Mapping Angle: **1°08'29"** Combination Scale Factor: **0.9999951255**

Monument Type: 3-1/4" aluminum disk set in the top of a 12" dia. poured-in-place concrete monument.



This document was prepared by Dan Corbin, Inc. on February 18th, 2019 for Hardin County, Iowa.