

Hardin County, Iowa
 Horizontal Datum: **NAD 83(NA2011)** - Vertical Datum: **NAVD 1988**
 Iowa State Plane North Zone (1401)
 Iowa Regional Coordinate System, Zone 4, Sioux City-Iowa Falls LCC
 US Survey Feet
9/30/18

Point Name: **8057**

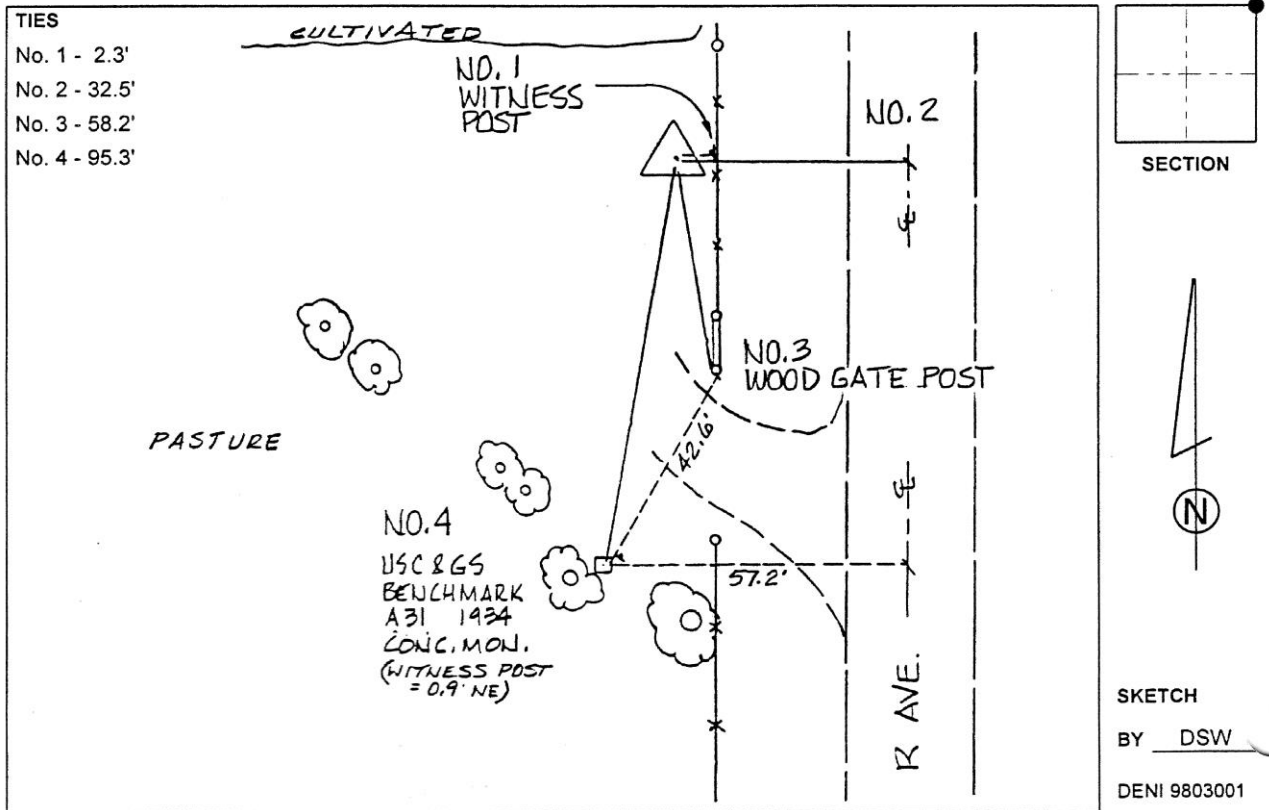
Designation: 892024 1 (Set by Deni Associates in 1998)

NAD 83(NA2011) Latitude: **N42°30'50.48053"** Longitude: **W93°08'41.27834"**
 NAVD 88 Ortho Height: **1140.070sft** Ellip. Ht: **1038.916sft** **Geoid12B**

Iowa North Zone (1401) Northing: **3650566.798sft** Easting: **5017014.329sft**
 Mapping Angle: **0°14'27"** Combination Scale Factor: **0.9998992884**

IaRCS Zone 4 Northing: **8597496.951sft** Easting: **14955254.552sft**
 Mapping Angle: **1°08'29"** Combination Scale Factor: **0.9999953940**

Monument Type: 3-1/4" aluminum disk set in the top of a 12" dia. poured-in-place concrete monument.



This document was prepared by Dan Corbin, Inc. on February 18th, 2019 for Hardin County, Iowa.