

Hardin County, Iowa
 Horizontal Datum: **NAD 83(NA2011)** - Vertical Datum: **NAVD 1988**
 Iowa State Plane North Zone (1401)
 Iowa Regional Coordinate System, Zone 4, Sioux City-Iowa Falls LCC
 US Survey Feet
9/30/18

Point Name: **8058**

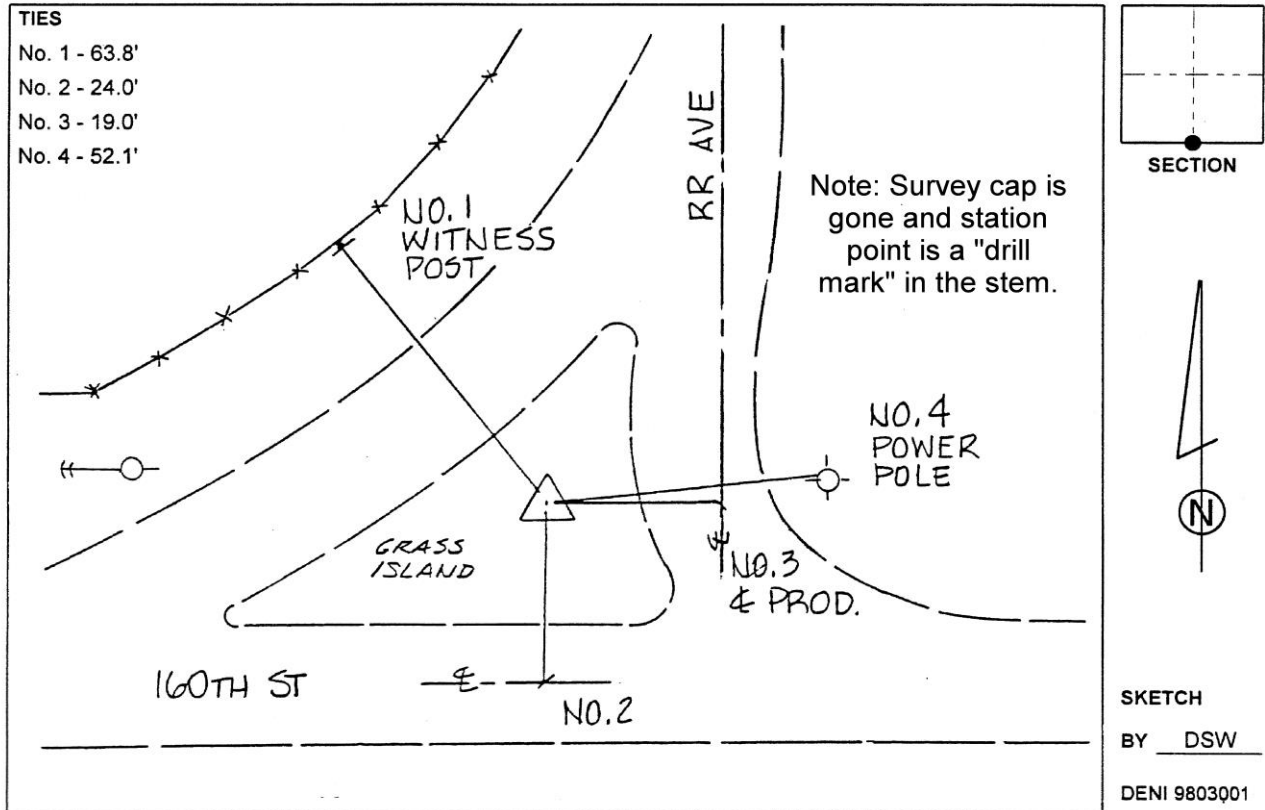
Designation: 891931 3 (Set by Deni Associates in 1998)

NAD 83(NA2011) Latitude: **N42°28'15.92112"** Longitude: **W93°08'03.84398"**
 NAVD 88 Ortho Height: **1078.069sft** Ellip. Ht: **976.345sft** Geoid12B

Iowa North Zone (1401) Northing: **3634932.927sft** Easting: **5019885.460sft**
 Mapping Angle: **0°14'52"** Combination Scale Factor: **0.9999045568**

IaRCS Zone 4 Northing: **8581908.662sft** Easting: **14958371.391sft**
 Mapping Angle: **1°08'55"** Combination Scale Factor: **0.9999989158**

Monument Type: 3-1/4" aluminum disk set in the top of a 12" dia. poured-in-place concrete monument.



This document was prepared by Dan Corbin, Inc. on February 18th, 2019 for Hardin County, Iowa.