

Hardin County, Iowa
 Horizontal Datum: **NAD 83(NA2011)** - Vertical Datum: **NAVD 1988**
 Iowa State Plane North Zone (1401)
 Iowa Regional Coordinate System, Zone 4, Sioux City-Iowa Falls LCC
 US Survey Feet

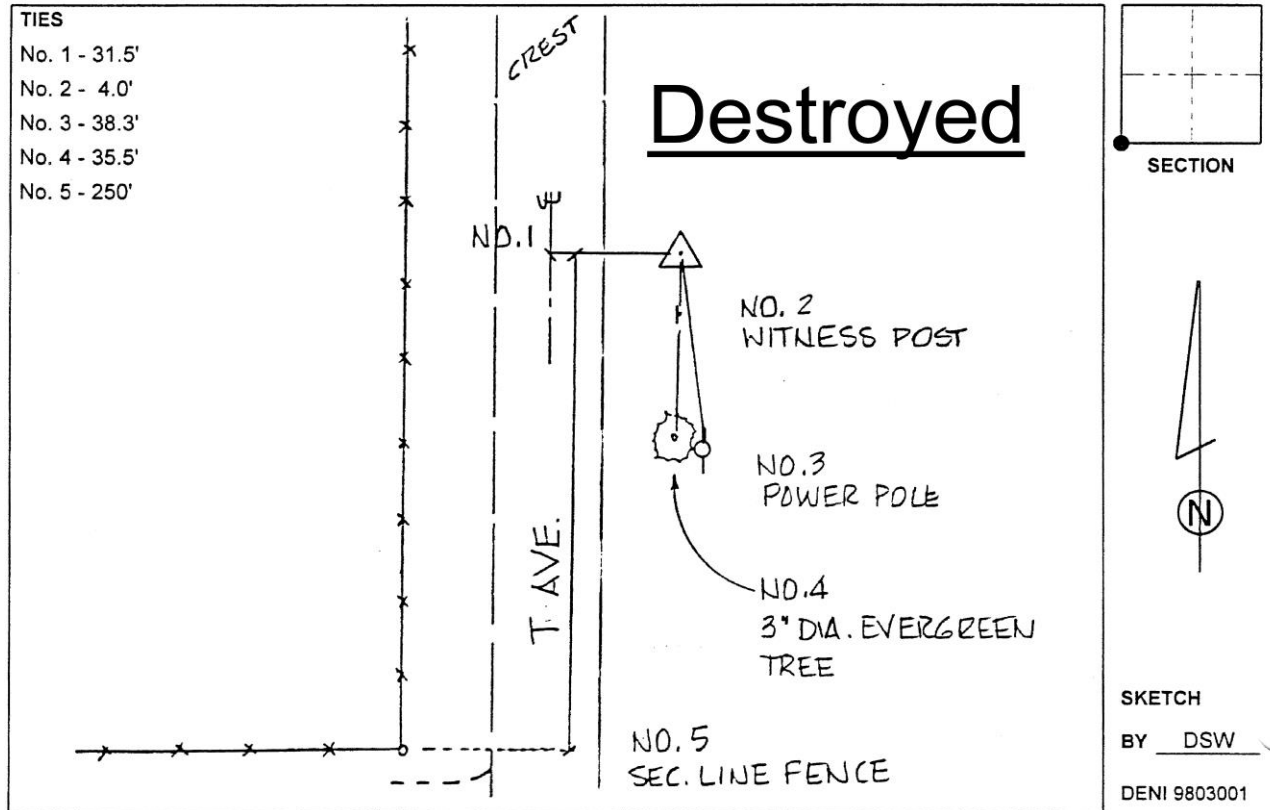
Point Name: **8059 (Destroyed)**

Designation: 881918 3 (Set by Deni Associates in 1998)

NAD 83(1996) Latitude: ~~N 42 25 36.91043~~ Longitude: ~~W 93 07 08.21167~~
 NAVD 88 Ortho Height: ~~1092.690~~sft Ellip. Ht: ~~990.615~~sft

Iowa North Zone (1401) Northing: ~~3618855.010~~sft Easting: ~~5024127.190~~sft
 Mapping Angle: ~~0 15 29.72~~ Combination Scale Factor: ~~0.9999541500~~

Monument Type: 3-1/4" aluminum disk set in the top of a 12" dia. poured-in-place concrete monument.



This document was prepared by Dan Corbin, Inc. on February 18th, 2019 for Hardin County, Iowa.