

Hardin County, Iowa
Horizontal Datum: **NAD 83(NA2011)** - Vertical Datum: **NAVD 1988**
Iowa State Plane North Zone (1401)
Iowa Regional Coordinate System, Zone 4, Sioux City-Iowa Falls LCC
US Survey Feet
9/30/18

Point Name: **8060**

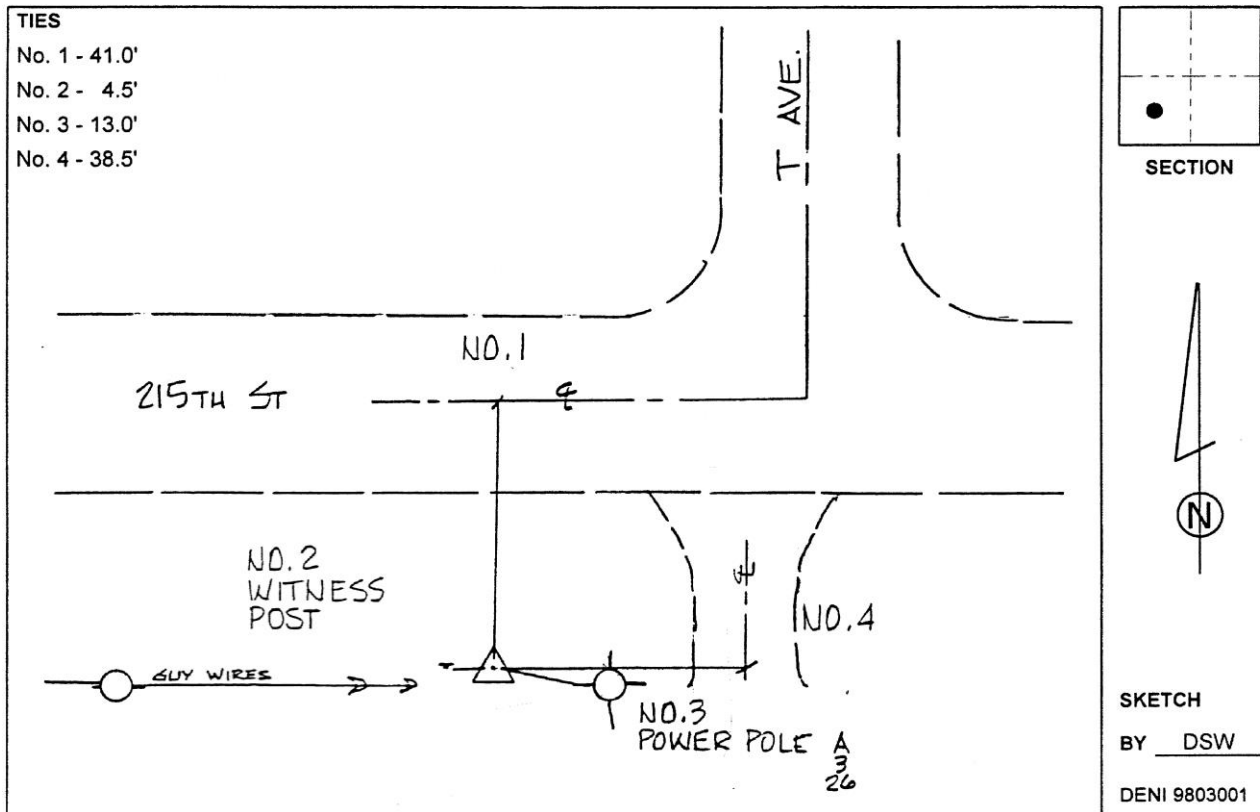
Designation: 881931 3 (Set by Deni Associates in 1998)

NAD 83(NA2011) Latitude: **N42°23'10.89195"** Longitude: **W93°06'53.02153"**
NAVD 88 Ortho Height: **1041.222sft** Ellip. Ht: **938.746sft** Geoid**12B**

Iowa North Zone (1401) Northing: **3604079.093sft** Easting: **5025333.725sft**
Mapping Angle: **0°15'40"** Combination Scale Factor: **0.9999124851**

IaRCS Zone 4 Northing: **8551141.436sft** Easting: **14964304.546sft**
Mapping Angle: **1°09'43"** Combination Scale Factor: **1.0000034004**

Monument Type: 3-1/4" aluminum disk set in the top of a 12" dia. poured-in-place concrete monument.



This document was prepared by Dan Corbin, Inc. on February 18th, 2019 for Hardin County, Iowa.