

**Hardin County, Iowa**  
 Horizontal Datum: **NAD 83(NA2011)** - Vertical Datum: **NAVD 1988**  
 Iowa State Plane North Zone (1401)  
 Iowa Regional Coordinate System, Zone 4, Sioux City-Iowa Falls LCC  
 US Survey Feet  
**9/30/18**

Point Name: **8061**

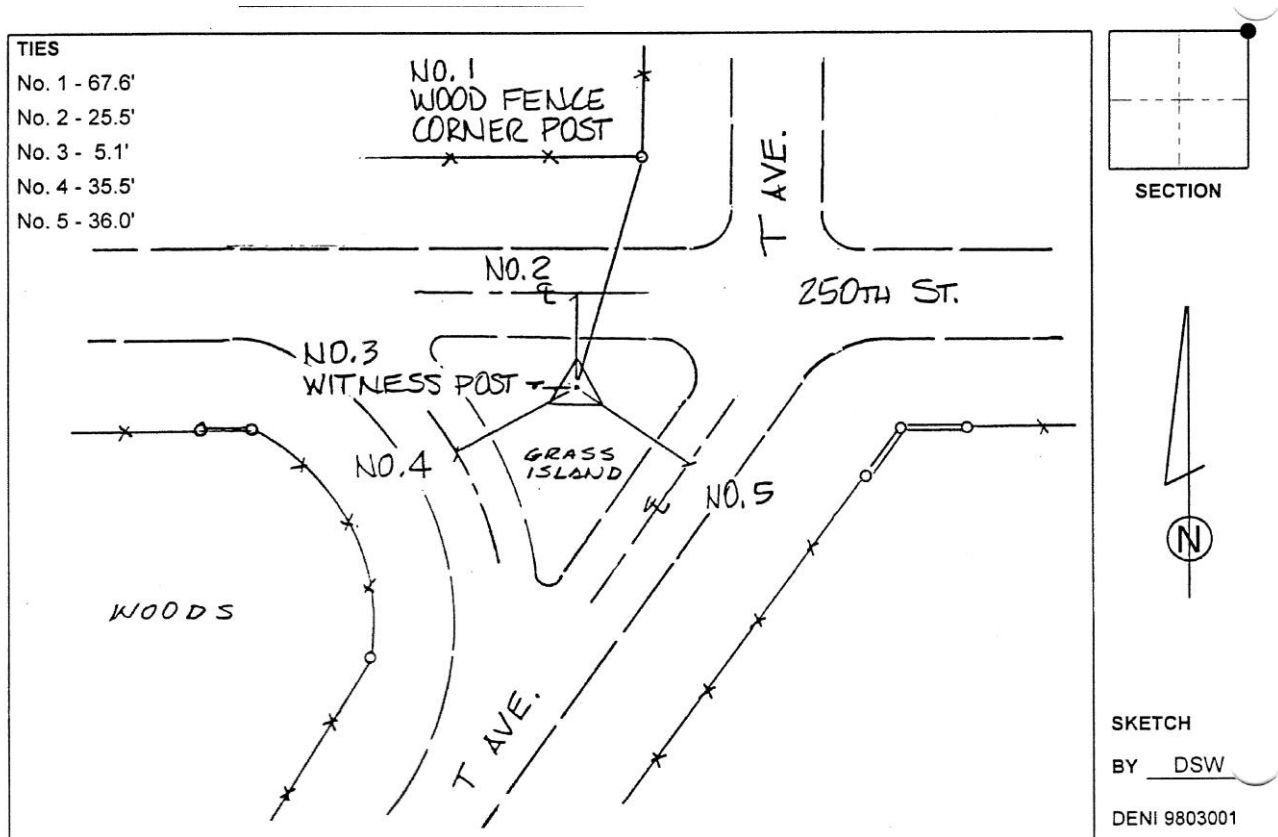
**Designation:** 872024 1 (Set by Deni Associates in 1998)

NAD 83(NA2011) Latitude: **N42°20'19.89126"** Longitude: **W93°07'06.27245"**  
 NAVD 88 Ortho Height: **983.170sft** Ellip. Ht: **880.642sft** Geoid12B

**Iowa North Zone (1401)** Northing: **3586764.679sft** Easting: **5024417.470sft**  
 Mapping Angle: **0°15'31"** Combination Scale Factor: **0.9999196485**

**IaRCS Zone 4** Northing: **8533813.199sft** Easting: **14963660.520sft**  
 Mapping Angle: **1°09'34"** Combination Scale Factor: **1.0000086355**

**Monument Type:** 3-1/4" aluminum disk set in the top of a 12" dia. poured-in-place concrete monument.



*This document was prepared by Dan Corbin, Inc. on February 18<sup>th</sup>, 2019 for Hardin County, Iowa.*