

Hardin County, Iowa
 Horizontal Datum: **NAD 83(NA2011)** - Vertical Datum: **NAVD 1988**
 Iowa State Plane North Zone (1401)
 Iowa Regional Coordinate System, Zone 4, Sioux City-Iowa Falls LCC
 US Survey Feet
9/30/18

Point Name: **8062**

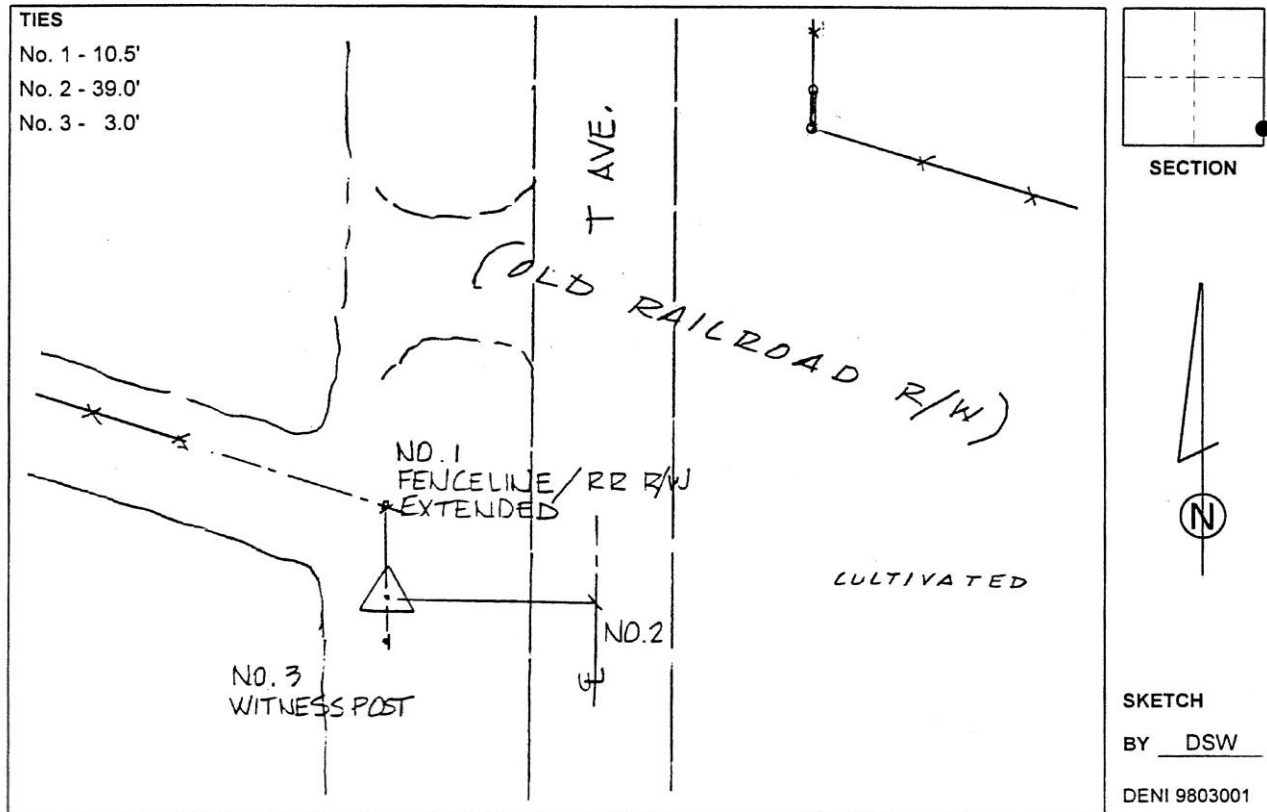
Designation: 872036 2 (Set by Deni Associates in 1998)

NAD 83(NA2011) Latitude: **N42°17'47.88780"** Longitude: **W93°07'05.58851"**
 NAVD 88 Ortho Height: **976.240sft** Ellip. Ht: **873.669sft** Geoid**12B**

Iowa North Zone (1401) Northing: **3571378.093sft** Easting: **5024538.321sft**
 Mapping Angle: **0°15'32"** Combination Scale Factor: **0.9999244526**

IaRCS Zone 4 Northing: **8518429.058sft** Easting: **14964023.259sft**
 Mapping Angle: **1°09'34"** Combination Scale Factor: **1.0000117265**

Monument Type: 3-1/4" aluminum disk set in the top of a 12" dia. poured-in-place concrete monument.



This document was prepared by Dan Corbin, Inc. on February 18th, 2019 for Hardin County, Iowa.