

Hardin County, Iowa
 Horizontal Datum: **NAD 83(NA2011)** - Vertical Datum: **NAVD 1988**
 Iowa State Plane North Zone (1401)
 Iowa Regional Coordinate System, Zone 4, Sioux City-Iowa Falls LCC
 US Survey Feet
9/30/18

Point Name: **8063**

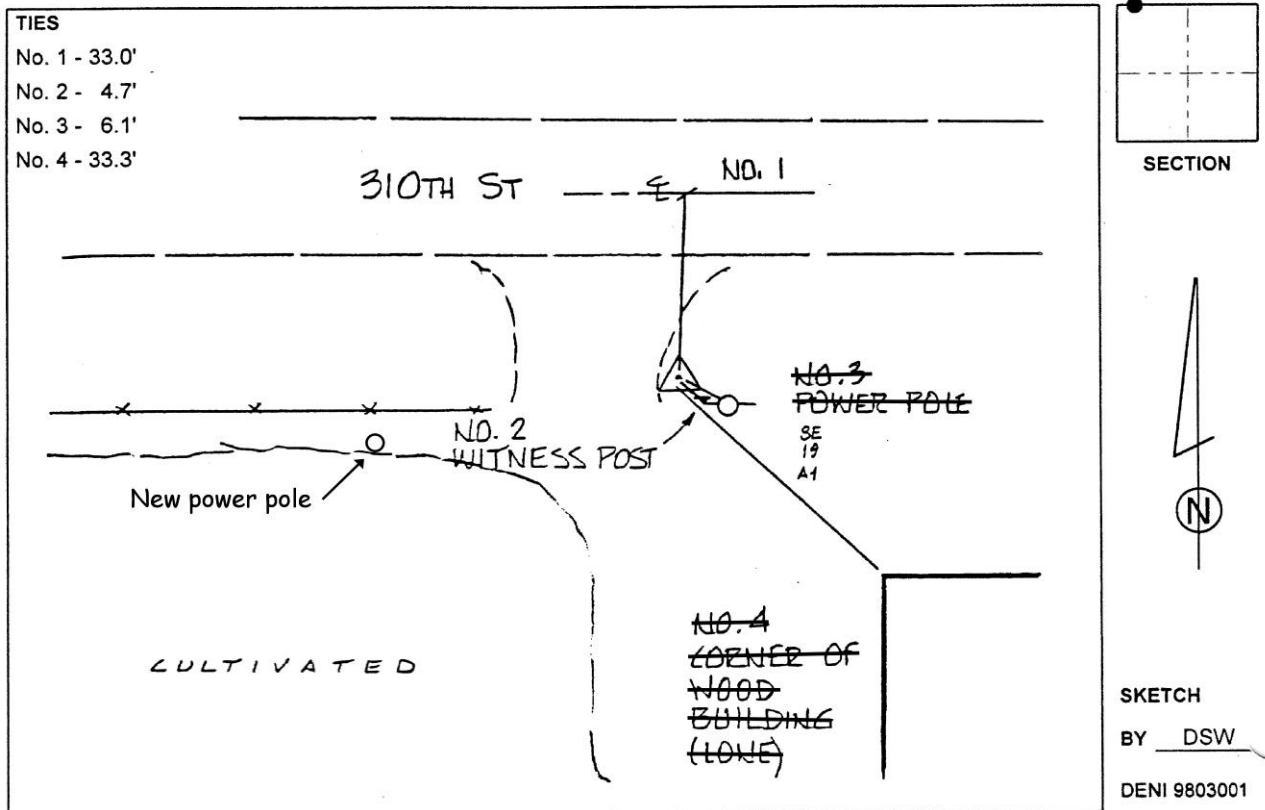
Designation: 861919 4 (Set by Deni Associates in 1998)

NAD 83(NA2011) Latitude: **N42°15'07.45545"** Longitude: **W93°06'56.80679"**
 NAVD 88 Ortho Height: **1055.920sft** Ellip. Ht: **953.314sft** Geoid**12B**

Iowa North Zone (1401) Northing: **3555141.083sft** Easting: **5025272.081sft**
 Mapping Angle: **0°15'37"** Combination Scale Factor: **0.9999259478**

IaRCS Zone 4 Northing: **8502204.188sft** Easting: **14965012.251sft**
 Mapping Angle: **1°09'40"** Combination Scale Factor: **1.0000114147**

Monument Type: 3-1/4" aluminum disk set in the top of a 12" dia. poured-in-place concrete monument.



This document was prepared by Dan Corbin, Inc. on February 18th, 2019 for Hardin County, Iowa.