

Hardin County, Iowa
 Horizontal Datum: **NAD 83(NA2011)** - Vertical Datum: **NAVD 1988**
 Iowa State Plane North Zone (1401)
 Iowa Regional Coordinate System, Zone 4, Sioux City-Iowa Falls LCC
 US Survey Feet
9/30/18

Point Name: **8064**

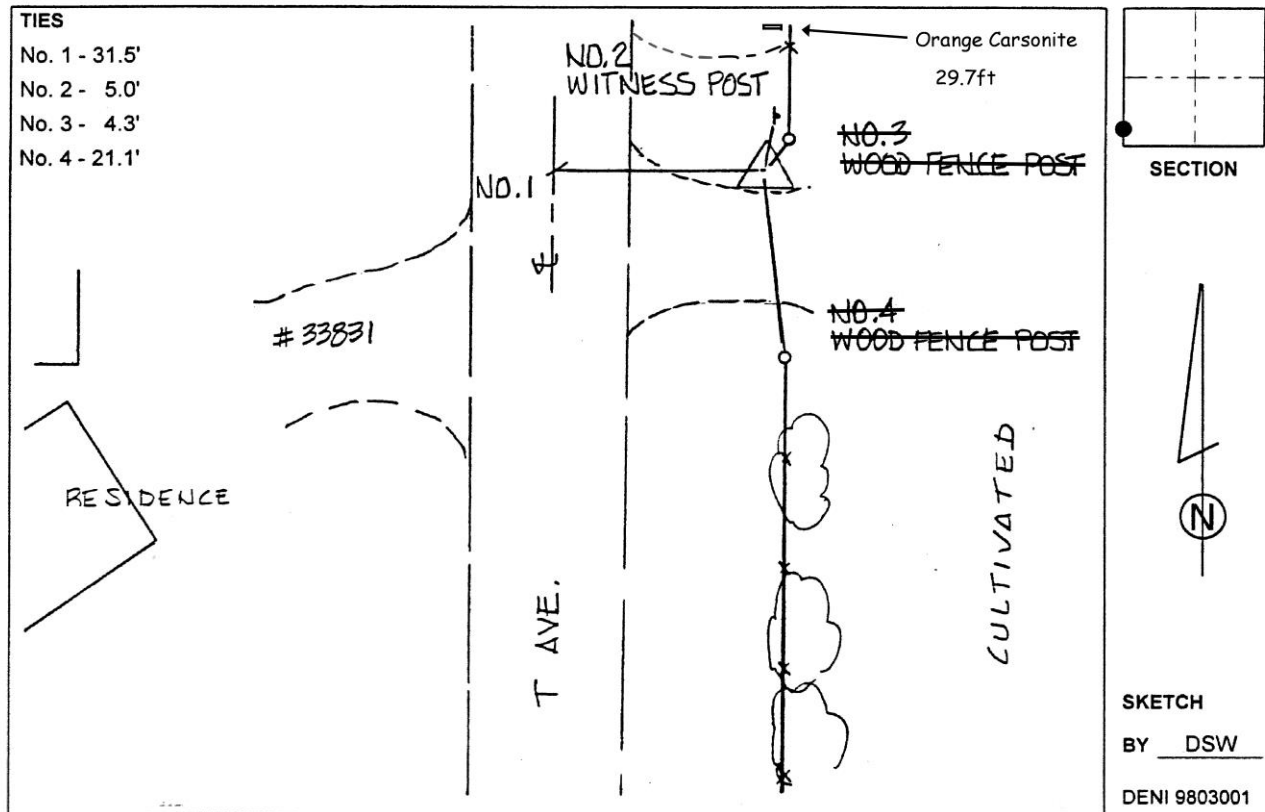
Designation: 861931 3 (Set by Deni Associates in 1998)

NAD 83(NA2011) Latitude: **N42°12'40.05950"** Longitude: **W93°07'04.09053"**
 NAVD 88 Ortho Height: **1004.670sft** Ellip. Ht: **902.065sft** **Geoid12B**

Iowa North Zone (1401) Northing: **3540218.258sft** Easting: **5024791.771sft**
 Mapping Angle: **0°15'33"** Combination Scale Factor: **0.9999337965**

IaRCS Zone 4 Northing: **8487274.392sft** Easting: **14964766.559sft**
 Mapping Angle: **1°09'35"** Combination Scale Factor: **1.0000176048**

Monument Type: 3-1/4" aluminum disk set in the top of a 12" dia. poured-in-place concrete monument.



This document was prepared by Dan Corbin, Inc. on February 18th, 2019 for Hardin County, Iowa.