

Hardin County, Iowa
 Horizontal Datum: **NAD 83(NA2011)** - Vertical Datum: **NAVD 1988**
 Iowa State Plane North Zone (1401)
 Iowa Regional Coordinate System, Zone 4, Sioux City-Iowa Falls LCC
 US Survey Feet
9/30/18

Point Name: **8065**

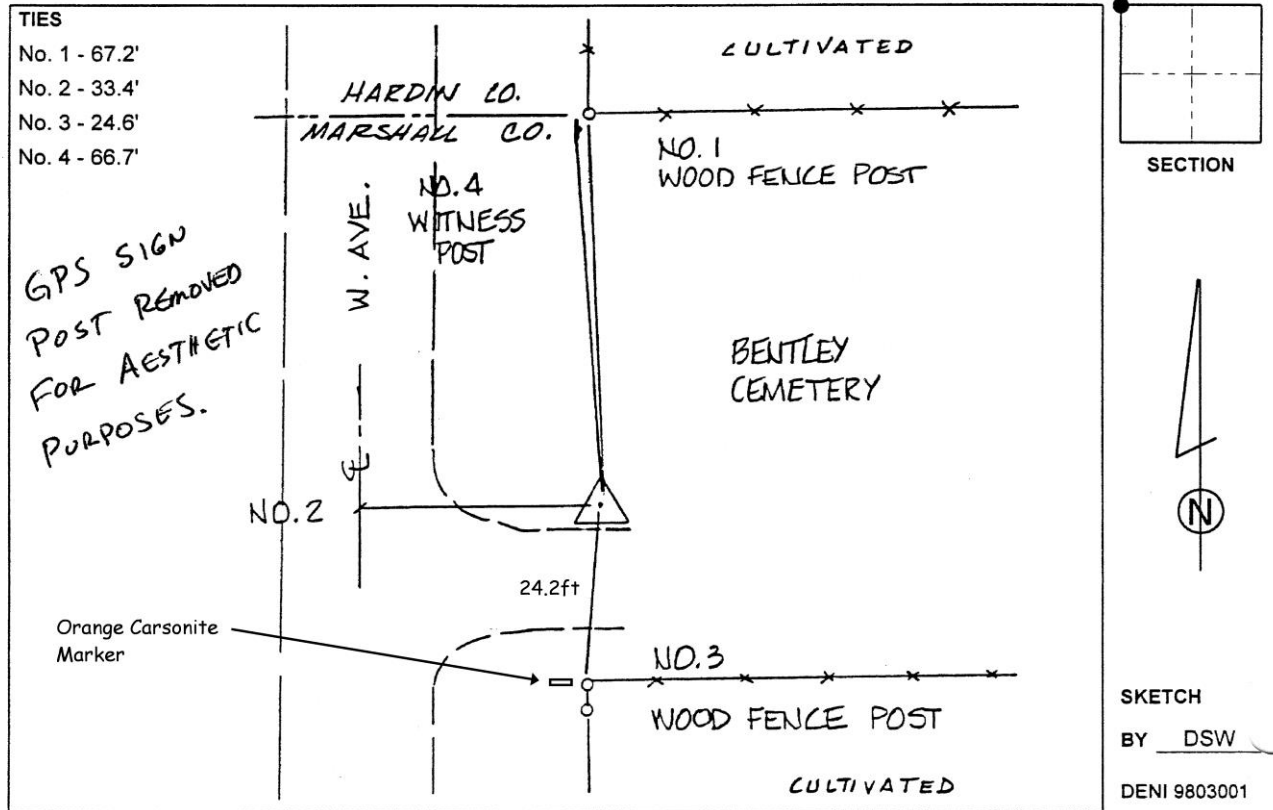
Designation: 851903 4 (Set by Deni Associates in 1998)

NAD 83(NA2011) Latitude: **N42°12'31.89234"** Longitude: **W93°03'35.38660"**
 NAVD 88 Ortho Height: **997.750sft** Ellip. Ht: **894.503sft** Geoid**12B**

Iowa North Zone (1401) Northing: **3539467.920sft** Easting: **5040501.609sft**
 Mapping Angle: **0°17'54"** Combination Scale Factor: **0.9999344719**

IaRCS Zone 4 Northing: **8486771.042sft** Easting: **14980487.567sft**
 Mapping Angle: **1°11'56"** Combination Scale Factor: **1.0000181883**

Monument Type: 3-1/4" aluminum disk set in the top of a 12" dia. poured-in-place concrete monument.



This document was prepared by Dan Corbin, Inc. on February 18th, 2019 for Hardin County, Iowa.