

Hardin County, Iowa
 Horizontal Datum: **NAD 83(NA2011)** - Vertical Datum: **NAVD 1988**
 Iowa State Plane North Zone (1401)
 Iowa Regional Coordinate System, Zone 4, Sioux City-Iowa Falls LCC
 US Survey Feet
9/30/18

Point Name: **8067**

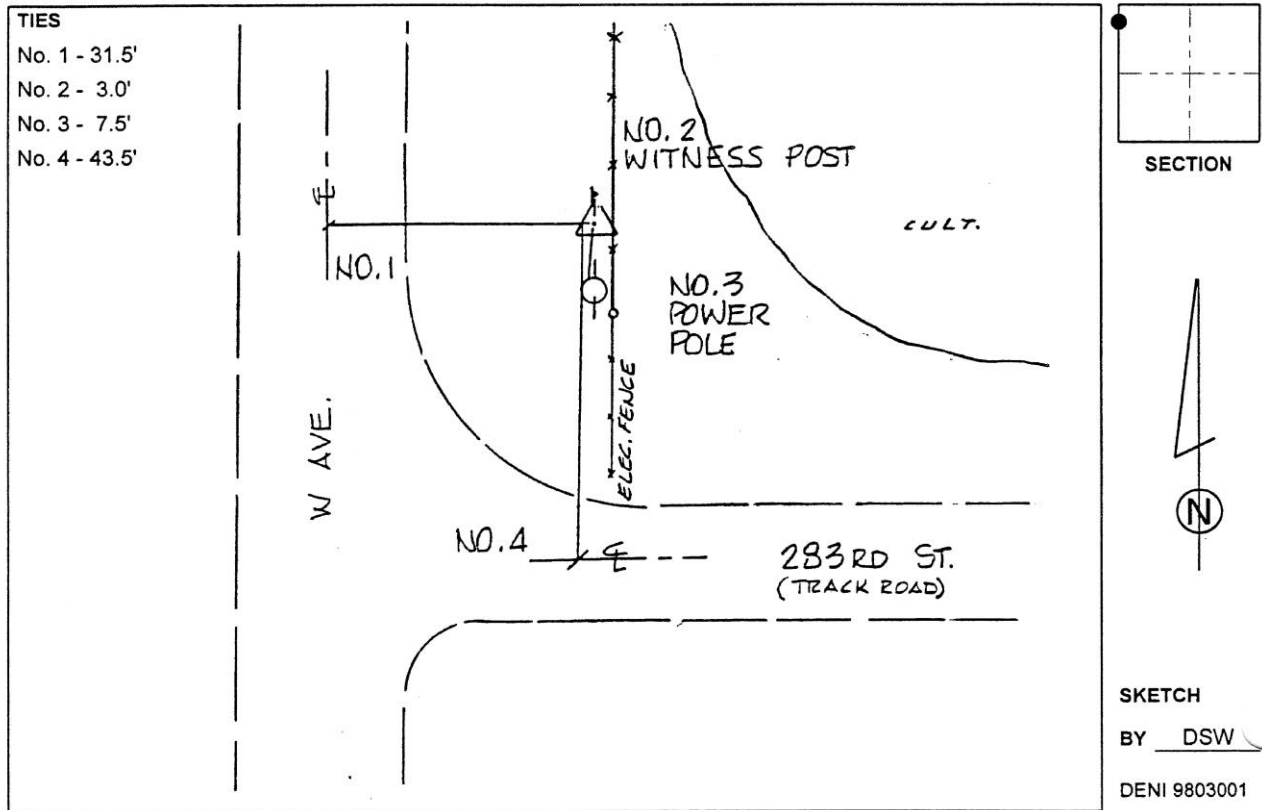
Designation: 861903 4 (Set by Deni Associates in 1998)

NAD 83(NA2011) Latitude: **N42°17'41.00594"** Longitude: **W93°03'37.01454"**
 NAVD 88 Ortho Height: **952.830sft** Ellip. Ht: **849.513sft** Geoid**12B**

Iowa North Zone (1401) Northing: **3570757.626sft** Easting: **5040216.344sft**
 Mapping Angle: **0°17'53"** Combination Scale Factor: **0.9999258224**

IaRCS Zone 4 Northing: **8518055.073sft** Easting: **14979710.466sft**
 Mapping Angle: **1°11'55"** Combination Scale Factor: **1.0000130189**

Monument Type: 3-1/4" aluminum disk set in the top of a 12" dia. poured-in-place concrete monument.



This document was prepared by Dan Corbin, Inc. on February 18th, 2019 for Hardin County, Iowa.