

**Hardin County, Iowa**  
 Horizontal Datum: **NAD 83(NA2011)** - Vertical Datum: **NAVD 1988**  
 Iowa State Plane North Zone (1401)  
 Iowa Regional Coordinate System, Zone 4, Sioux City-Iowa Falls LCC  
 US Survey Feet  
**9/30/18**

Point Name: **8068**

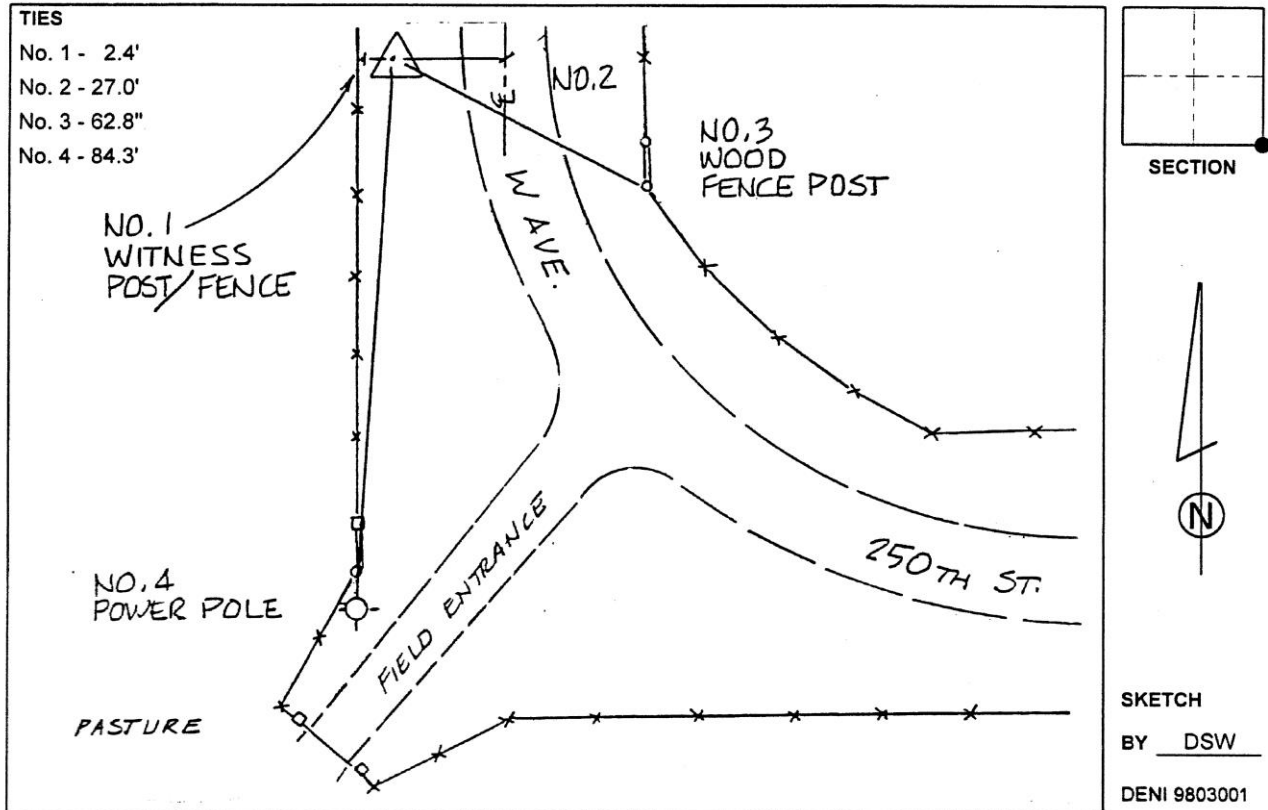
**Designation:** 871916 2 (Set by Deni Associates in 1998)

NAD 83(NA2011) Latitude: **N42°20'22.30543"** Longitude: **W93°03'37.95950"**  
 NAVD 88 Ortho Height: **995.310sft** Ellip. Ht: **891.980sft** Geoid**12B**

**Iowa North Zone (1401)** Northing: **3587085.026sft** Easting: **5040060.451sft**  
 Mapping Angle: **0°17'52"** Combination Scale Factor: **0.9999190399**

**laRCS Zone 4** Northing: **8534379.444sft** Easting: **14979297.925sft**  
 Mapping Angle: **1°11'54"** Combination Scale Factor: **1.0000080541**

**Monument Type:** 3-1/4" aluminum disk set in the top of a 12" dia. poured-in-place concrete monument.



*This document was prepared by Dan Corbin, Inc. on February 18<sup>th</sup>, 2019 for Hardin County, Iowa.*